

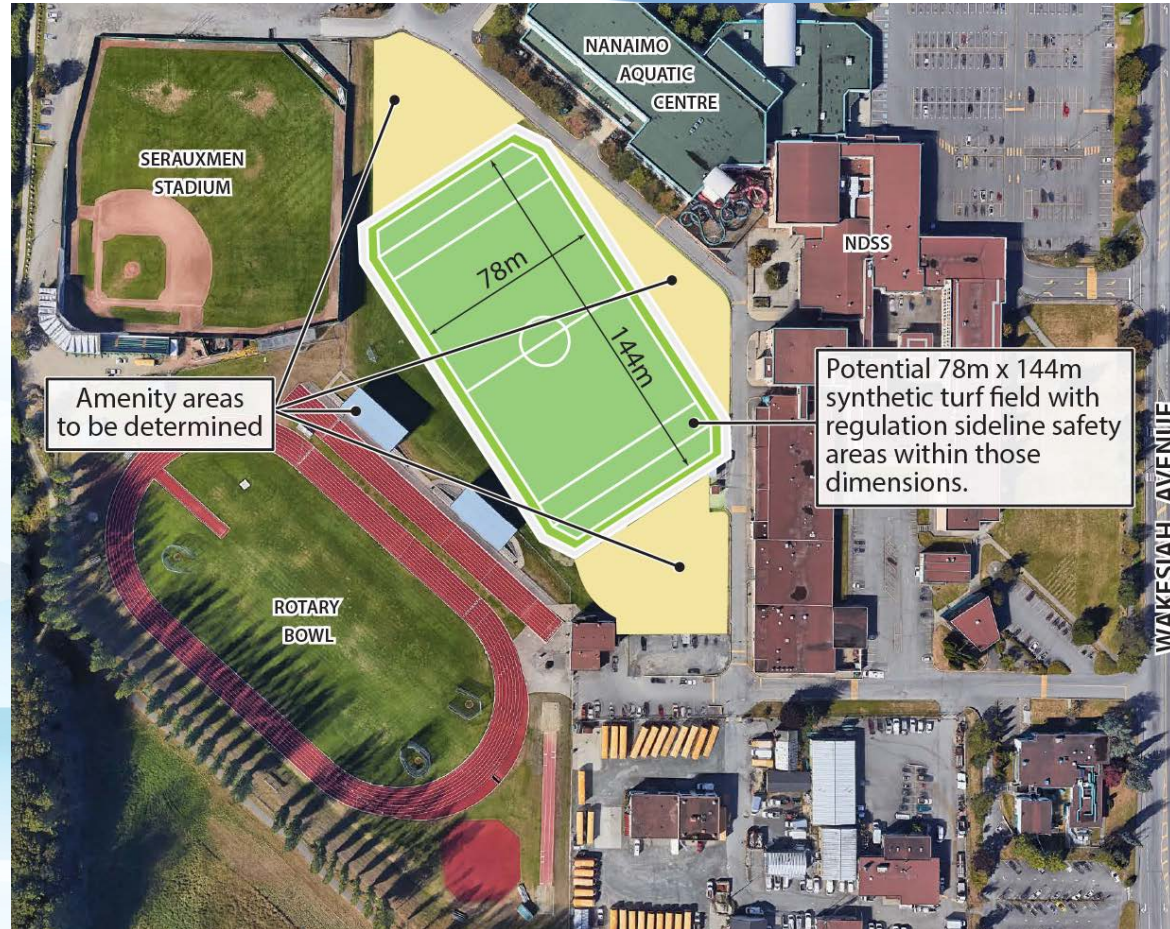
Update on the All Weather Field at NDSS



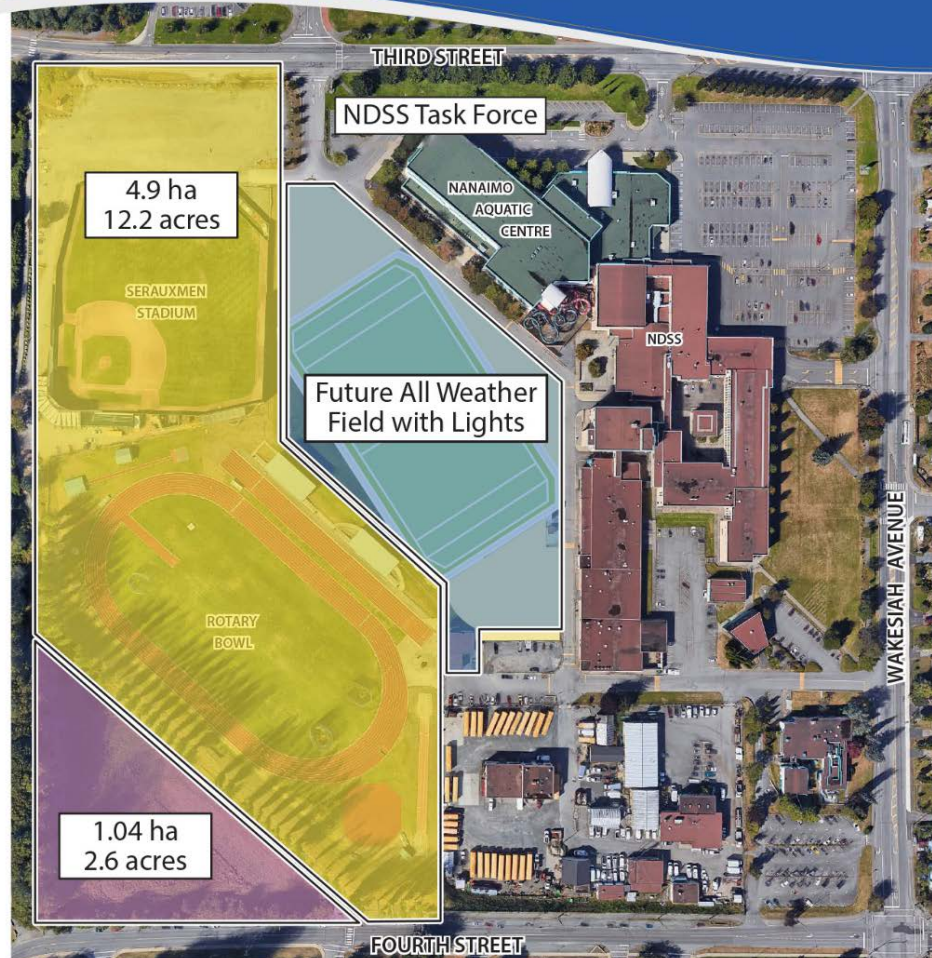
Joint Development & Use Agreement

All Weather Field at NDSS

- Artificial Turf Field as part of the purchase agreement for Rotary Bowl & Serauxmen Stadium
- Partnership project with School District #68
- Located at Nanaimo District Secondary School, in the Larry McNabb Sports Zone
- It will be the largest artificial turf field in Nanaimo



Purchase of Rotary Bowl & Serauxmen Stadium



- CoN to Acquire Rotary Bowl, Serauxmen Stadium and 'Triangle' for \$4,100,000
- NLPS and CoN to construct an Artificial Turf field at NDSS at a cost of \$2,400,000 (\$1.2M each)



NANAIMO
AQUATIC
CENTRE

NDSS

ROT
BO

SERAUXMEN
STADIUM

Parks & Recreation



























Kinsmen Outdoor Pool Liner Replacement

- Work took place in April
- Tank liner had reached end of life & required a condition assessment of the tank
- Tank was sandblasted, assessed, resealed, and then recoated



Beban Learning Garden & Greenhouse

- Officially opened 2017-APR-29
- Partnership project with Nanaimo Community Gardens Society
- Includes a greenhouse and gardens area



Steve Smith Bike Park



- Officially opened 2017-AUG-09 at Beban Park
- Partnership with the Steve Smith Legacy Foundation & Gyro Club in memory of Steve Smith, who died at 26 from injuries suffered in a May 2016 enduro-motorcycle crash
- Includes a pump track and dirt jump park



Beaufort Multi-Purpose Courts

- Officially opened on 2017-AUG-19
- Located in Beaufort Park
- Replaced the two existing tennis courts with six pickleball courts, as well as areas for basketball and other uses



Perfect Mind Software Upgrade

- Work is underway replacing Parks & Recreation Management Software
- “CLASS” has been in use for 21 years and is being replaced by “Perfect Mind” due to the retirement of CLASS
- Collaboration with other BC Municipalities



What is the software used for?

- **Point of Sale** – all admissions
- **Registration** for programs and activities
- **Online registration** and schedules
- **Booking** of facilities and equipment
- **Passes and membership** management
- **Marketing** – surveys, emails, brochures, promos
- **Reporting** – accounting, financial system
- **Storage** of 60,000 accounts (120,000 individuals)



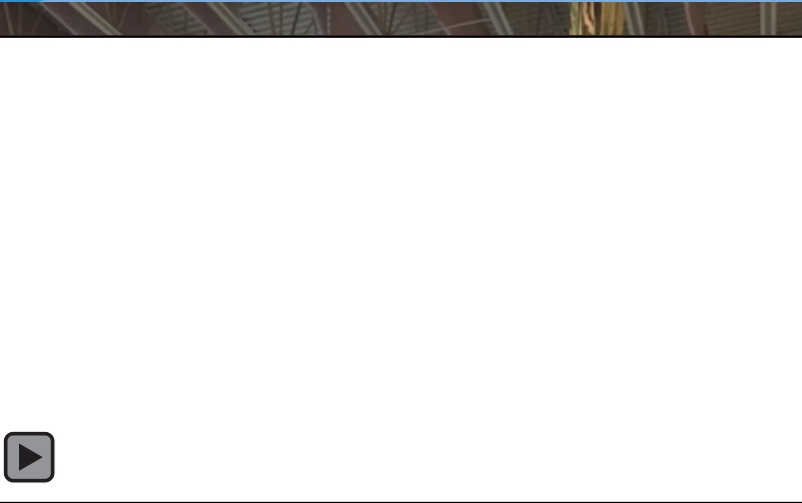
Perfect**Mind**

Pool Shutdowns

Beban Pool & Nanaimo Aquatic Centre

Beban Pool – regular annual maintenance
NAC – included regular maintenance as well as:

- Air mixing fans – one 24 ft & one 14 ft
- New sound system
- New diving board platform for the 1 metre board

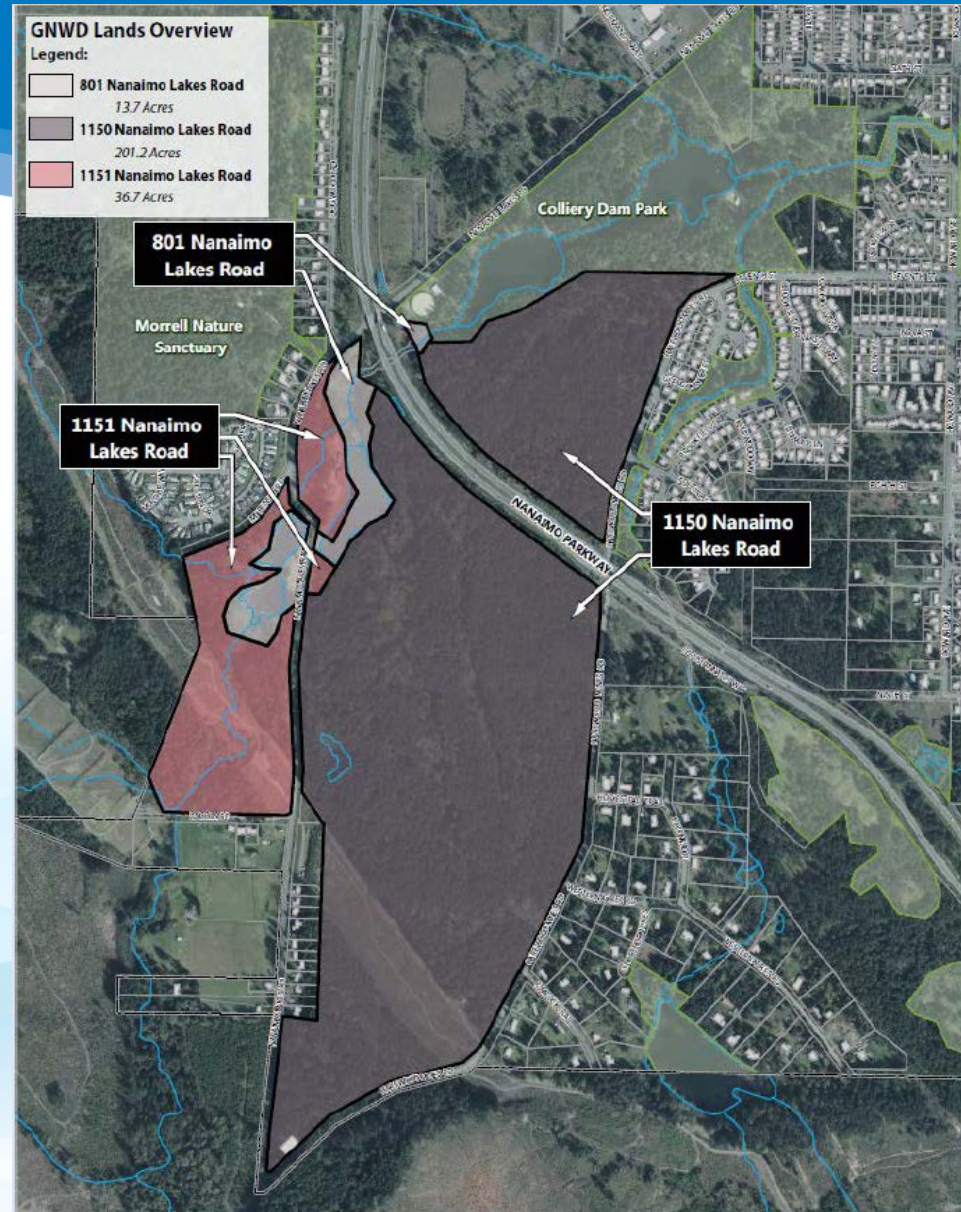


Buttertubs Marsh Conservation Area Management Plan

- Update to the management plan was approved by Council on 2017-AUG-28
- Conservation area includes Buttertubs Marsh Park and West Marsh, parcels of land secured by the Nature Trust of BC, Ducks Unlimited Canada and the City of Nanaimo
- Sets 5 year targets for restoration, ecological enhancement, research, public education and public access and recreation.

Former GNWD Lands converted to Parkland

- Former lands of the Greater Nanaimo Water District (GNWD) approved by Council in July as an extension to Colliery Dam Park
- Comprised of land parcels at 801, 1150, and 1151 Nanaimo Lakes Road



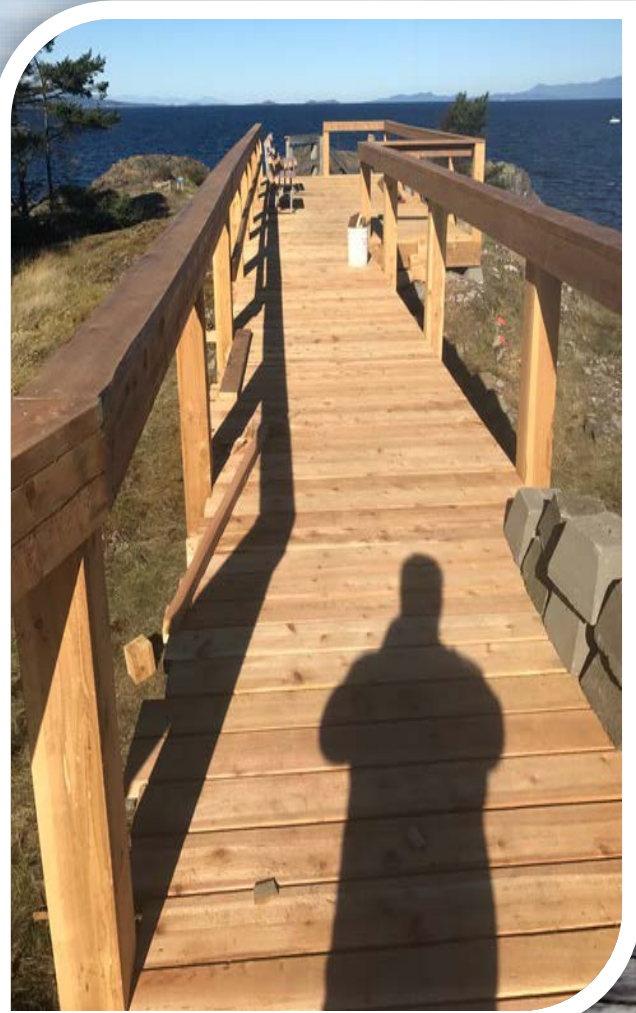
Westwood Lake Park Boardwalk Replacement

- A 75 m boardwalk replaced at Westwood Lake Park in Dec. & Jan.



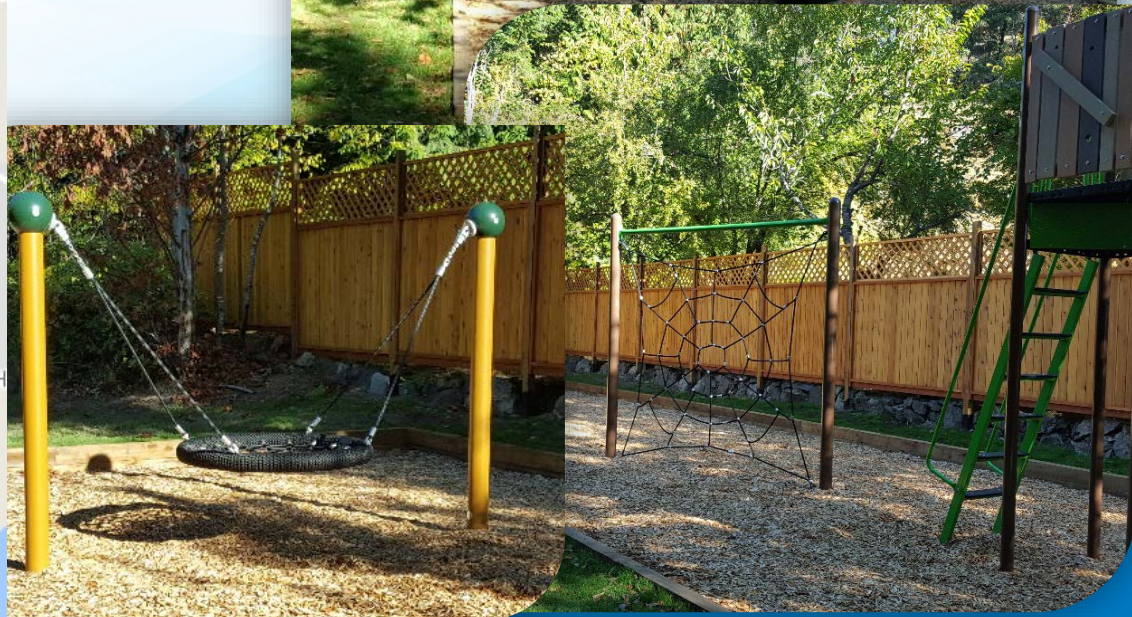
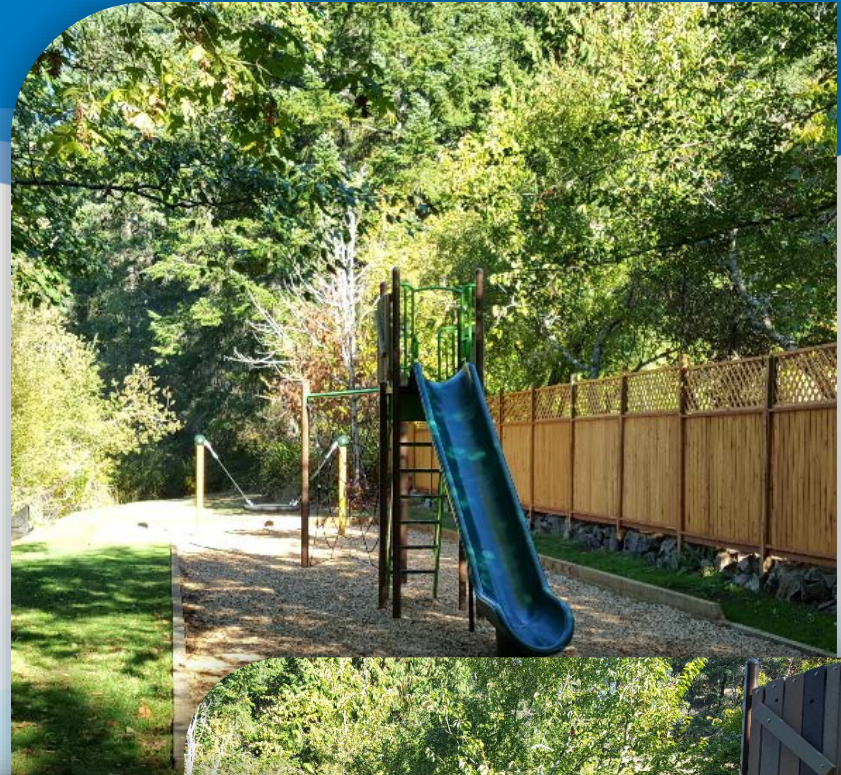
Neck Point Park Overlook Boardwalk Replacement

- Work is underway replacing the overlook boardwalk at Neck Point Park, completion target in November



Jesters Way Park Playground

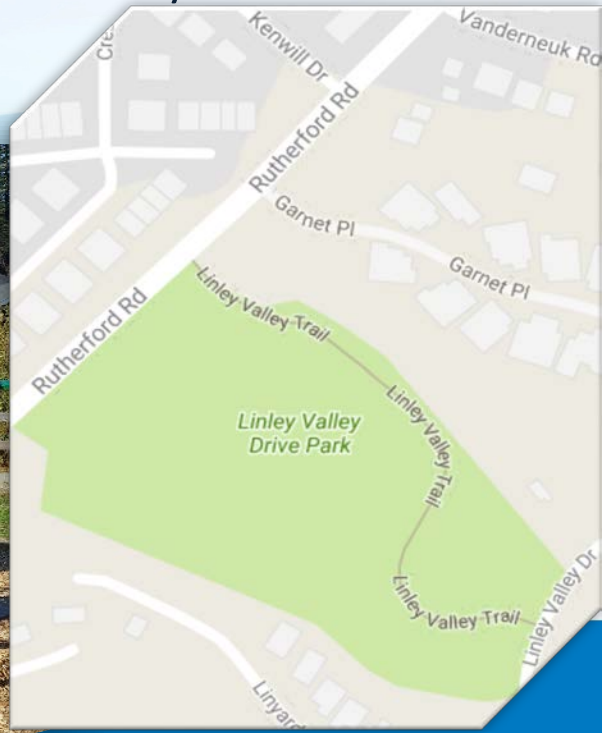
- Located in the Sherwood Forest neighbourhood, in Departure Bay
- Work was completed in June
- Included the replacement of previous playground equipment



Linley Point Gyro Park Playground



- Located off Rutherford Road in the Linley Point Development
- Work completed through July & August
- A new park, includes a playground, multi-purpose court and a planning for a picnic shelter
- Park connector trail to the Linley Point Trail & Linley Valley Park

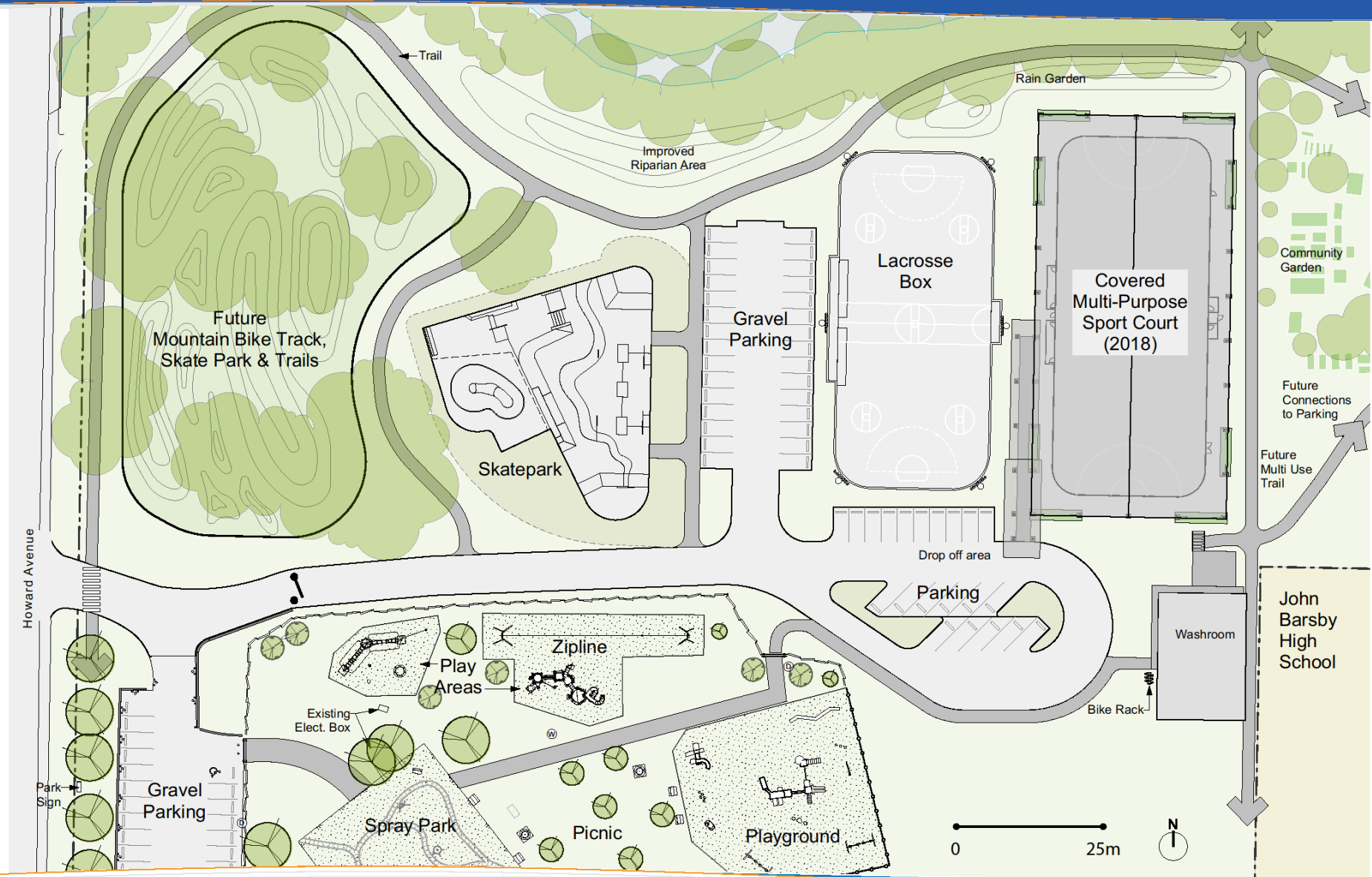


Brechin Boat Ramp Replacement

- Work is currently underway and will be completed in November
- Wood docks are being replaced with aluminum and composite docks that are wider, slip-resistant, and longer lasting

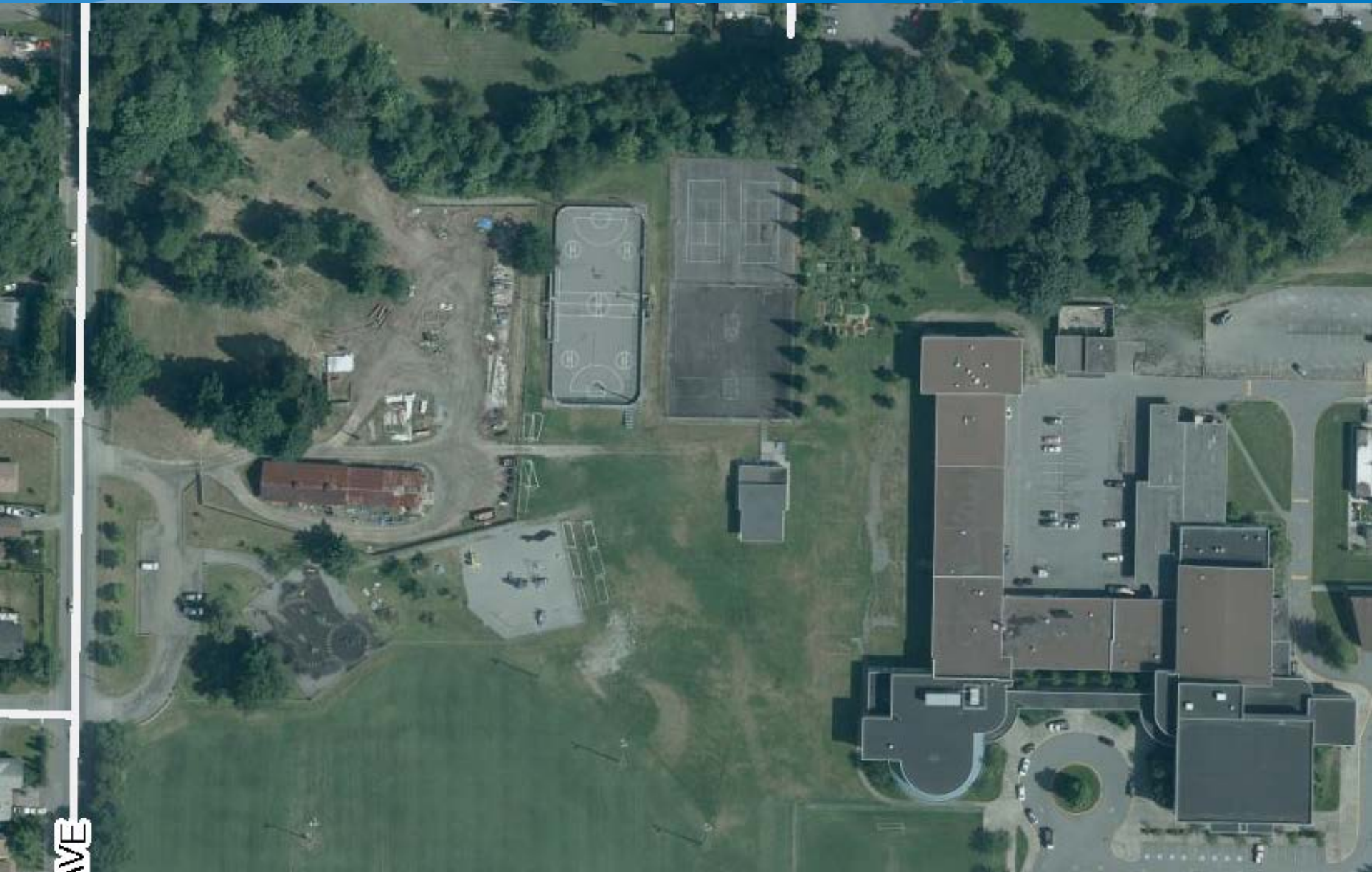


Harewood Centennial Park Site Plan



Harewood Centennial Park

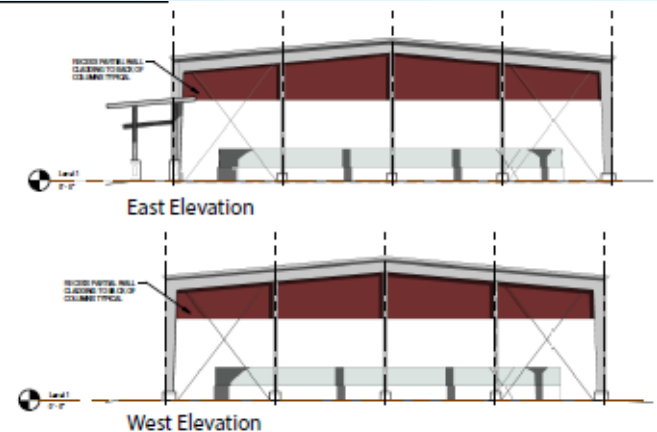
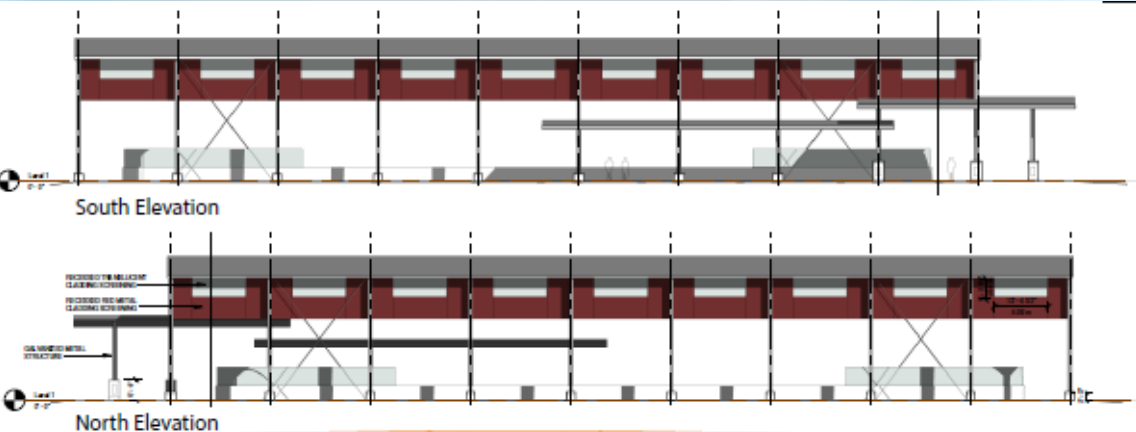
2012 Aerial View



Harewood Centennial Park Multi-Purpose Covered Space



- Construction started in July
- Expected to be completed by the end of December
- Providing a covered multi-use court and also installing a new outdoor lacrosse box.



- Next phase for Harewood Centennial Park – Skatepark
- Design drawings completed
- Staff are working with community group to develop plans

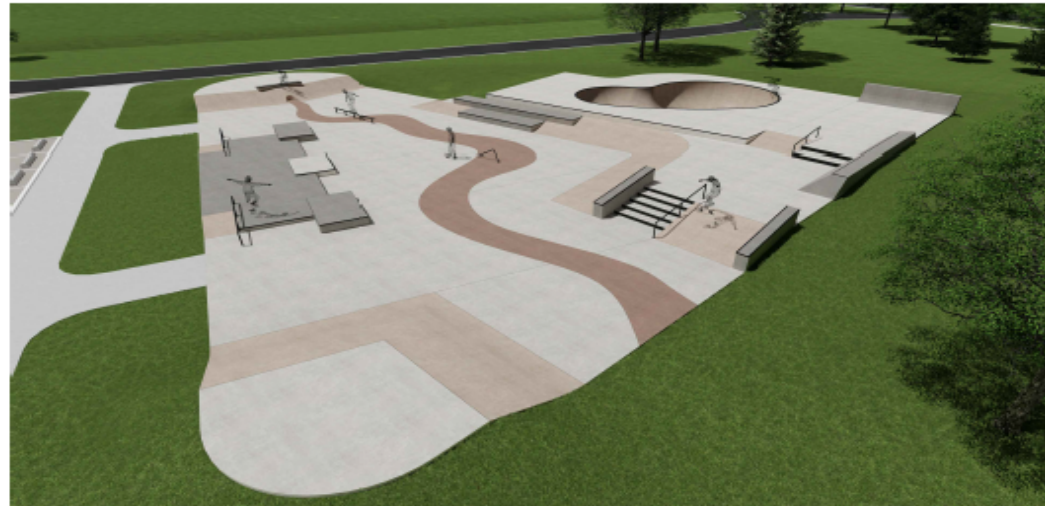
HAREWOOD SKATEPARK

ISSUE FOR: 100% REVIEW

DRAWING INDEX

Sheet List Table

Sheet Number	Sheet Title
SK-001	Context Plan
SK-002	Existing Conditions
SK-003	Site Plan
SK-004	Drainage Plan
SK-005	Rough Grading
SK-006	Sections
SK-007	Foundation Layout
SK-008	Walls and Ledges
SK-009	Layout and Dimensions
SK-010	Ordinate Layout
SK-011	Grading Plan
SK-012	Materials Plan
SK-013	Joint Plan
SK-D-000	Detail Reference
SK-D-001	Details Sheet 1
SK-D-002	Details Sheet 2
SK-DT-001	Typical Details 1



PERSPECTIVE VIEW

Note: perspective drawing not for construction reference.
Alterations have been made to model during detailed design phase.
Image shown to display broader design concept only.

LOCATION PLAN

SKATEPARK LOCATION



Located at Harewood Centennial Park, across from John Barsby School off Harewood Ave.

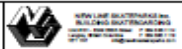
KEY CONTACTS

SKATEPARK DESIGN CONSULTANT

New Line Skateparks Inc.
Suite 101, 6249 205th Street
Langley, British Columbia, Canada
V2Y 1N7
ph: 604.530.1114
fax: 604.530.1119
Contact: jason@newlineskateparks.com

SKATEPARK GENERAL CONTRACTOR

New Line Skateparks Inc.
Suite 101, 6249 205th Street
Langley, British Columbia, Canada
V2Y 1N7
ph: 604.530.1114
fax: 604.530.1119
Contact: john@newlineskateparks.com



PROJECT HAREWOOD SKATEPARK	
LOCATION Nanaimo, BC	
DESIGNED BY JASON	CHECKED BY JASON
DATE 10.08.16	SCALE 1:100
DRAWING TITLE CONTEXT PLAN	
PROJECT NUMBER SK2016-03	SHEET NUMBER 3

*Richard Harding, Director
Parks and Recreation*

