

# d r a f t Hospital Area Plan Open House Display

---

2018-APR-25  
Community Planning & Development Committee

# Outline



- 1 Introduction & Purpose
- 2 Area Plan Process
- 3 Draft Plan
  - a) table of contents
  - b) land use planning
  - c) urban design framework
  - d) parking
- 4 Next Steps

# Purpose of the Area Plan

## **Area Plan**

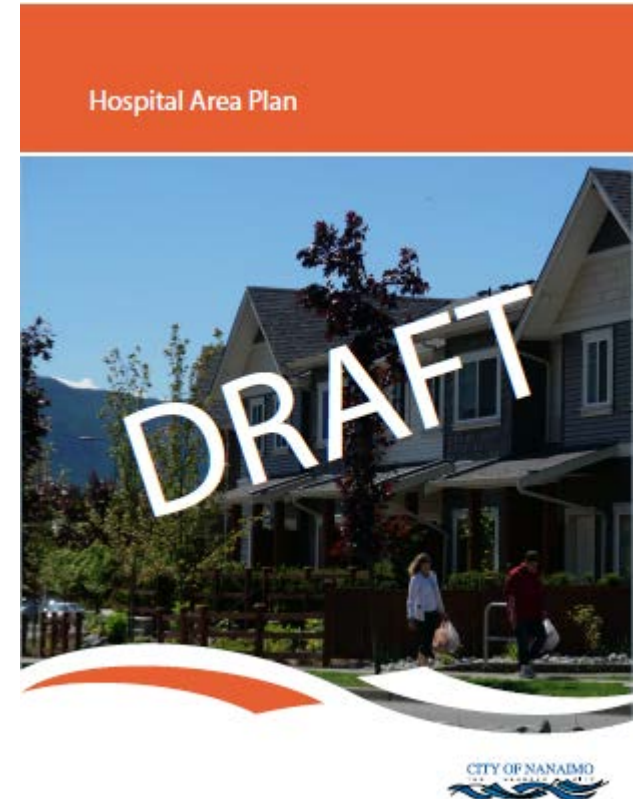
Plan prepared for a specific and defined subarea of the City which is adopted by bylaw, and forms part of the Official Community Plan (OCP). An area plan must fully meet the goals and policies of the OCP and compliment the vision, goals, objectives and policies established by the OCP.

## **OCP Hospital Urban Node Policy**

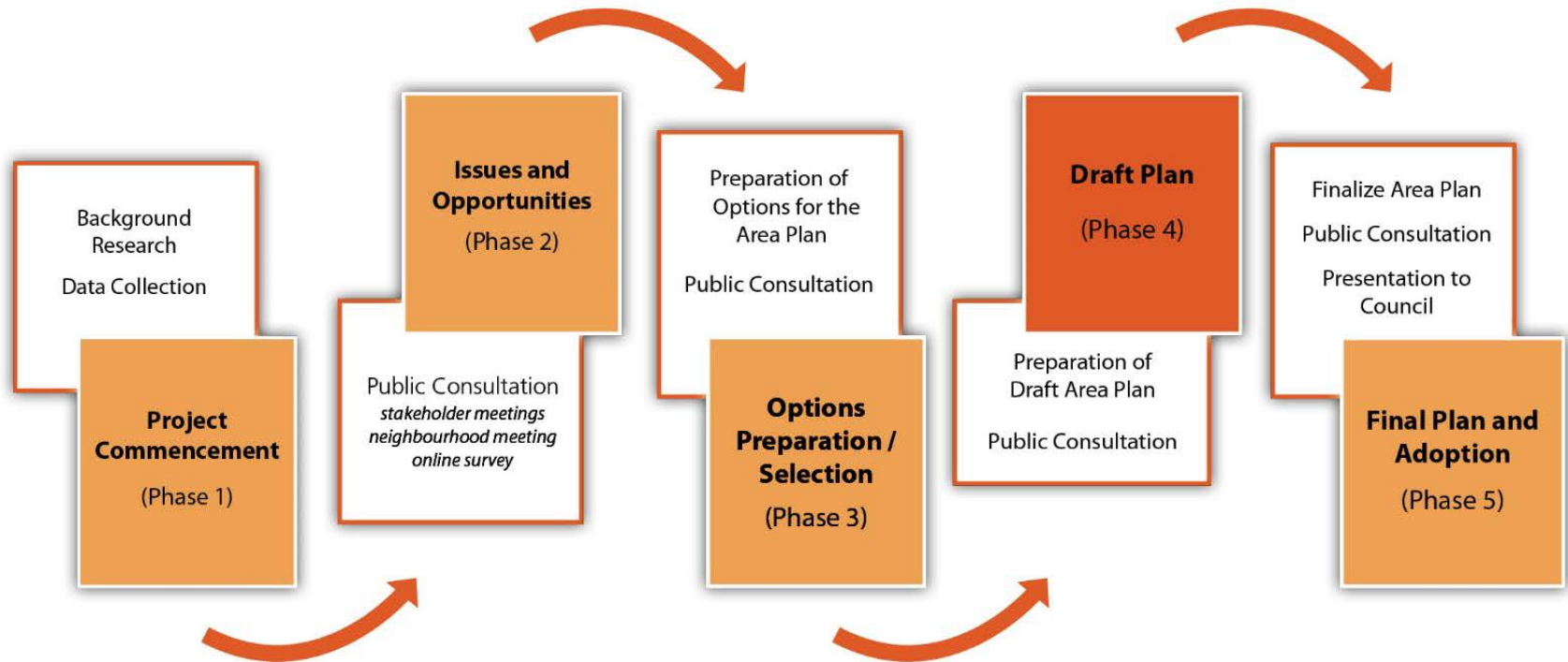
An Area Plan will be developed for the Hospital Urban Node in consultation with area residents, business owners and stakeholders.

## **Hospital Urban Node Definition**

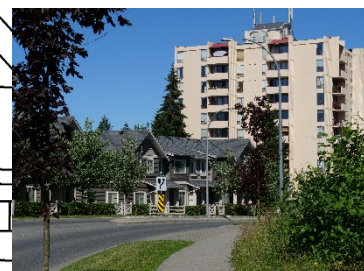
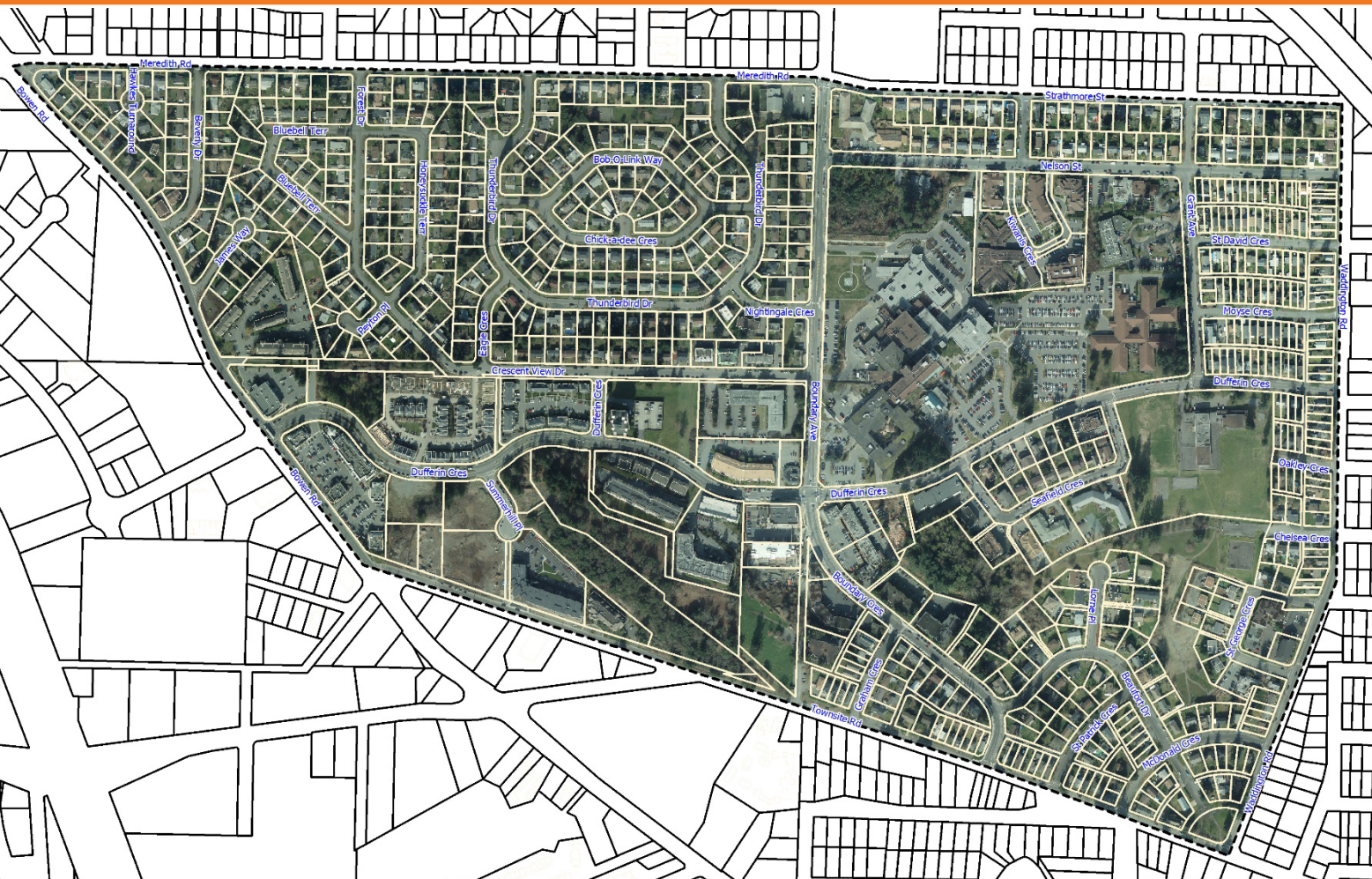
City-wide and regional centre for health services, seniors housing, professional offices and higher density residential.



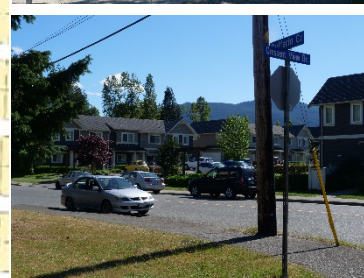
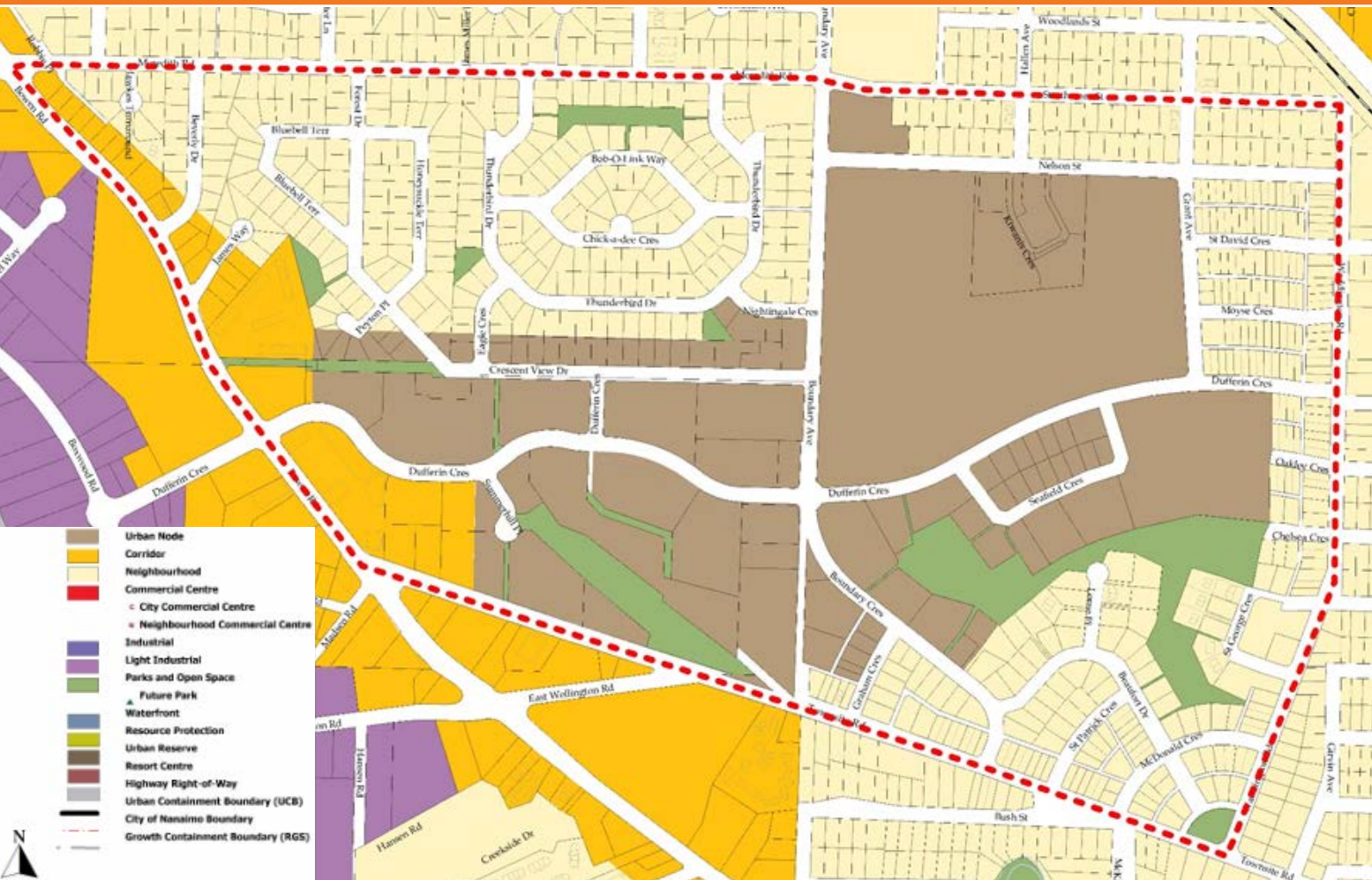
# Process



# Plan Area



# OCP Map



# Table of Contents

## Draft Table of Contents

### A INTRODUCTION

- 1 Policy Context
- 2 Purpose and Plan Elements
- 3 Plan Context
- 4 Neighbourhood History

### B PLAN PROCESS

- 1 Phase 1: Plan Initiation
- 2 Phase 2: Issues and Opportunities
- 3 Phase 3: Concepts and Options
- 4 Phase 4: Draft Plan
- 5 Phase 5: Final Plan and Adoption

### C URBAN DESIGN FRAMEWORK

- 1 Urban Design Principles
- 2 Street Character and Public Realm
- 3 Pedestrian Connections and Open Space
- 4 Transportation, Transit, and Cycling Networks

### D PLAN POLICIES

- 1 Guiding Principles – OCP Policy, Land Use Principles
- 2 Land Use and Development
- 3 Transportation and Infrastructure
- 4 Open Space and Connectivity
- 5 Parking Management
- 7 Relationships
- 8 Safety and Security

### E IMPLEMENTATION STRATEGY

### F GLOSSARY / HISTORIC PROPERTIES / MAPPING / FIGURES

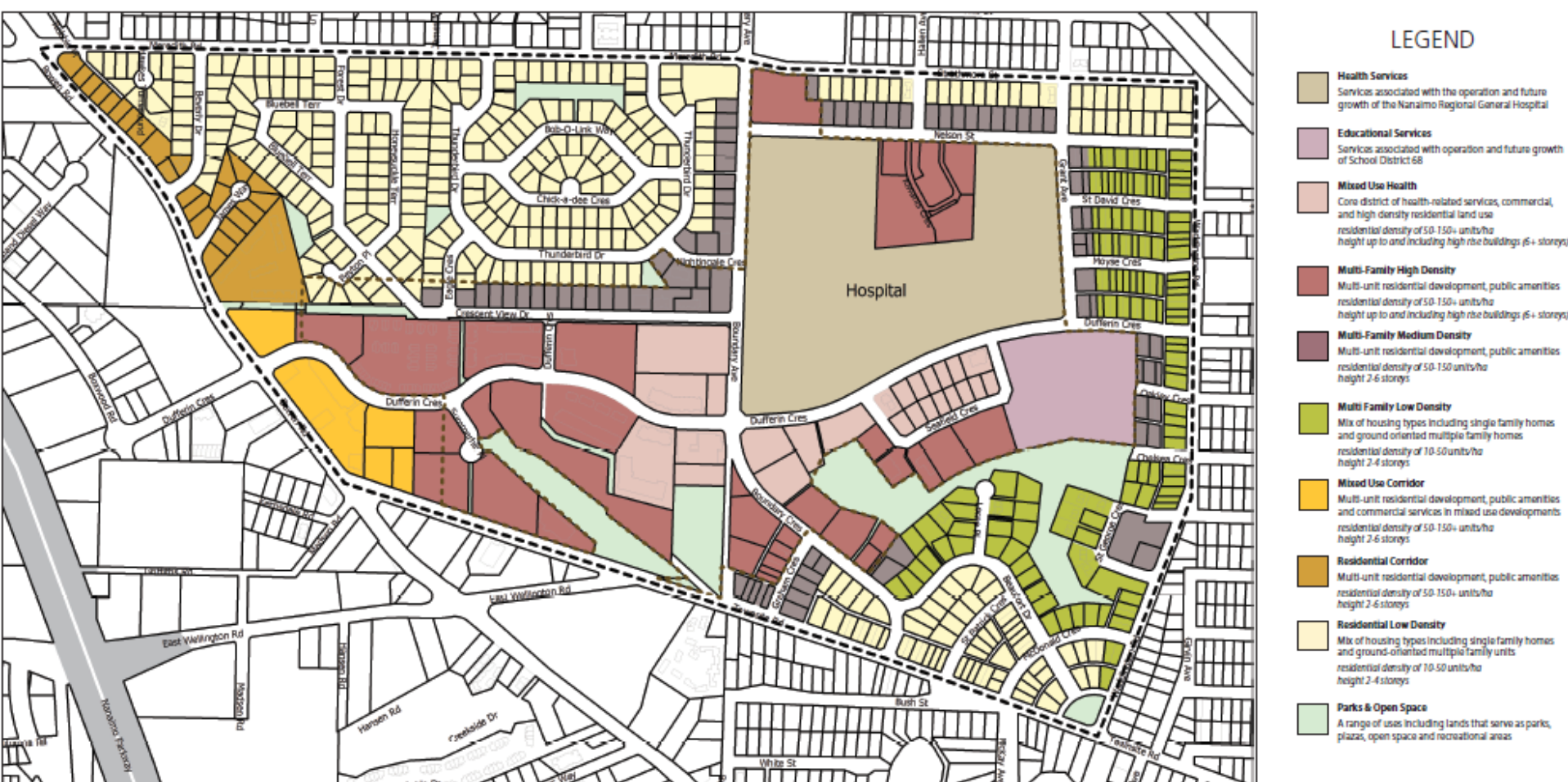




# Land Use Planning



# Land Use Plan



# Land Use Policies

## Multi-Family Low Density

1. Designate lands south of Beaufort Park and east of the Health Services designation as areas of ground-oriented multi-family homes.
2. Encourage multi-family low density building forms through zoning-based regulations including building height, floor-area ratios, lot coverage, and building setbacks.
3. Develop design guideless to guide multi-family low density projects in established residential neighbourhoods.
4. Permit low (10 to 50 units / ha) residential densities in buildings two to four storeys.



# Transportation & Infrastructure Policies

## Pedestrian Safety

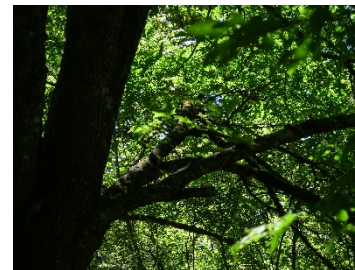
1. Inventory the condition of existing sidewalks within the plan area and identify gaps in the sidewalk network. Based on the inventory, develop a priority-based list of pedestrian infrastructure upgrades, including new sidewalks, crosswalks, trails, or accessibility improvements.
2. Improve pedestrian safety by lengthening the pedestrian crossing times at light-controlled intersections in the Plan Area: Dufferin Crescent and Boundary Avenue / Crescent, Dufferin Crescent and Bowen Road, and Boundary Avenue and Meredith Road / Strathmore Street.



# Open Space & Connectivity Policies

## *Beaufort Park and Hospital-Area Open Space*

1. Clear and maintain existing pedestrian accesses to Beaufort Park as per Crime Prevention Through Environmental Design principles.
2. Develop new amenities to encourage the safe use and enjoyment of Hospital-Area parkland and open space, especially underutilised or isolated areas.
3. Link and coordinate capital projects, including infrastructure upgrades, and Parks and Open Space improvements that enhance the safe use and enjoyment of parkland within the Plan Area.

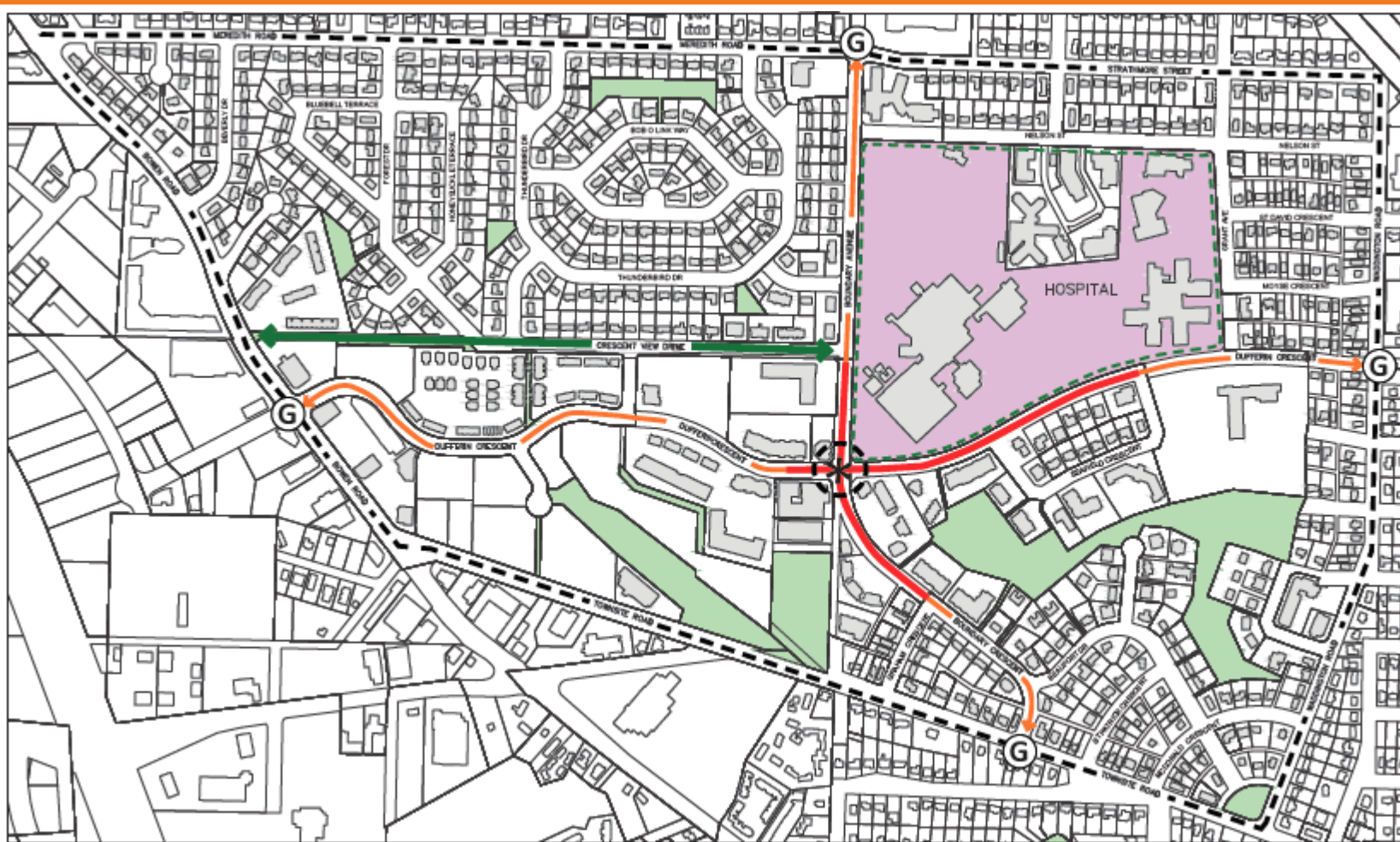




# Urban Design Framework

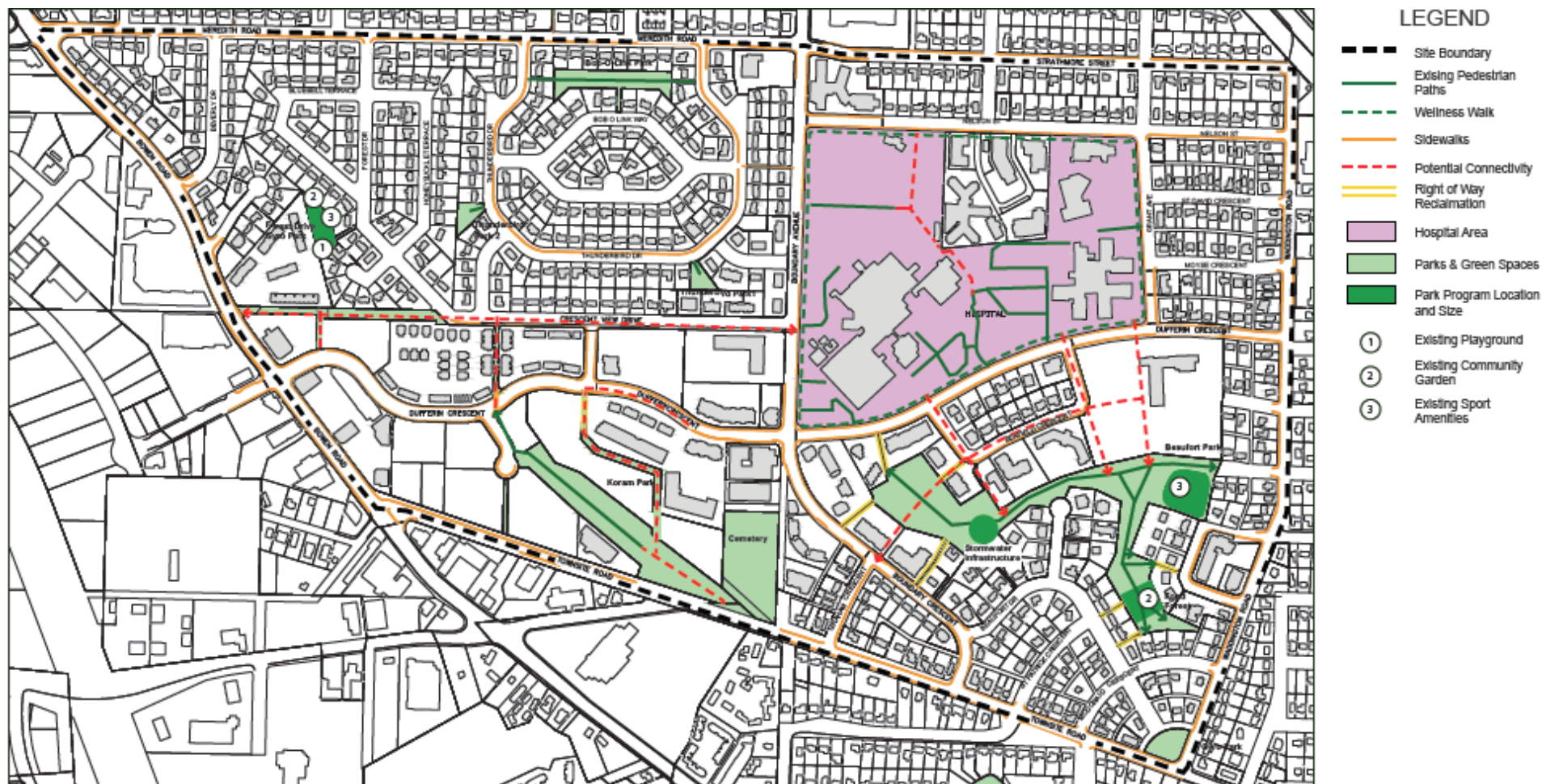


# Urban Design & Street Character

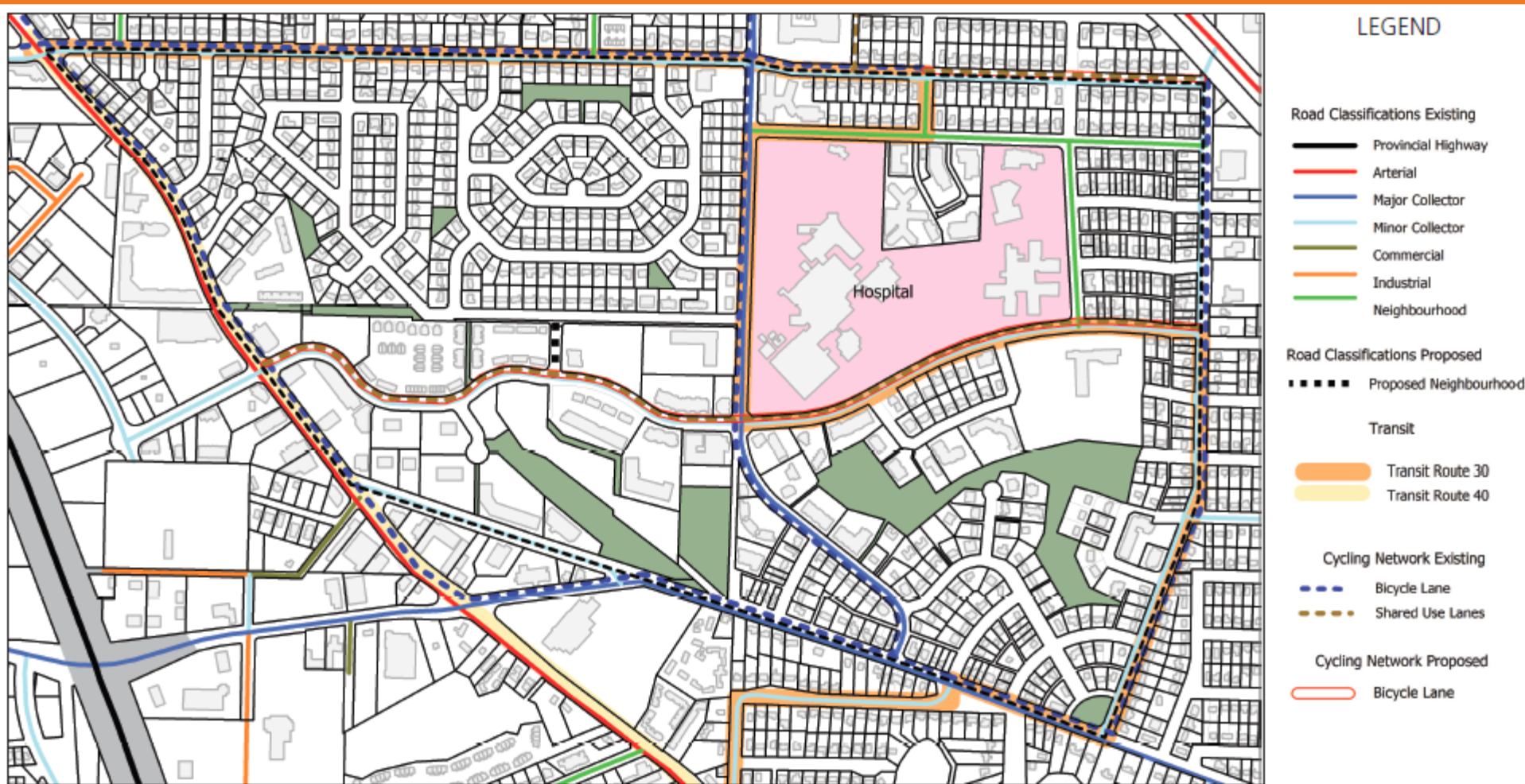


- LEGEND**
- Site Boundary
  - - - Wellness Walk
  - Major Roads
  - Proposed High Street
  - Proposed Greenway
  - Hospital Area
  - Parks & Green Spaces
  - Ⓜ Cardinal Gateways
  - ⊛ Proposed Core Intersection

# Open Space & Pedestrian Connectivity



# Mobility



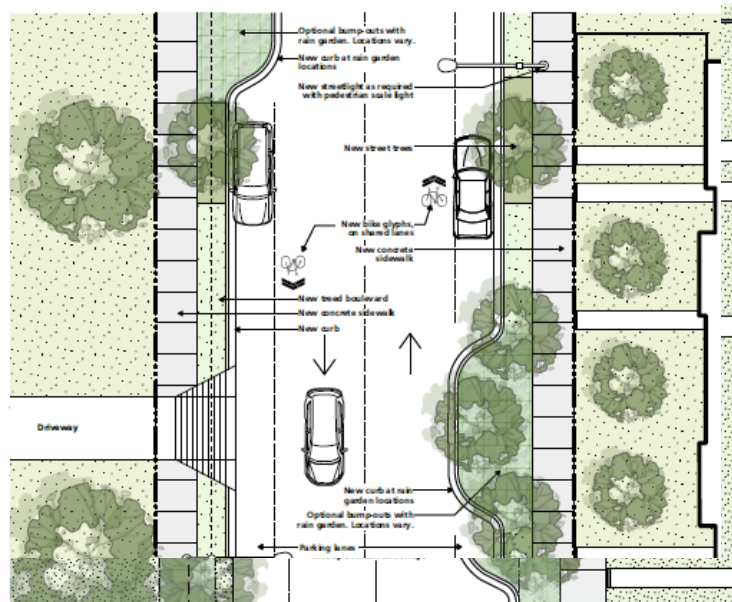
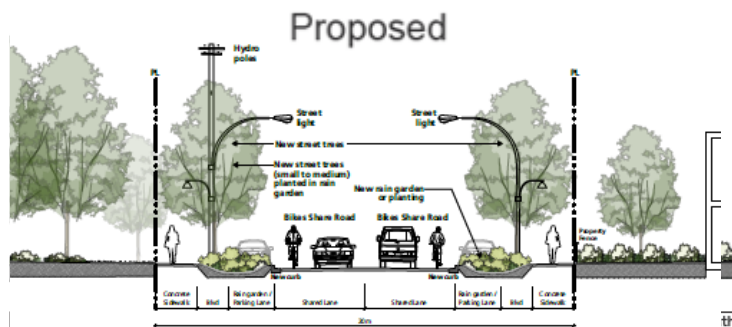
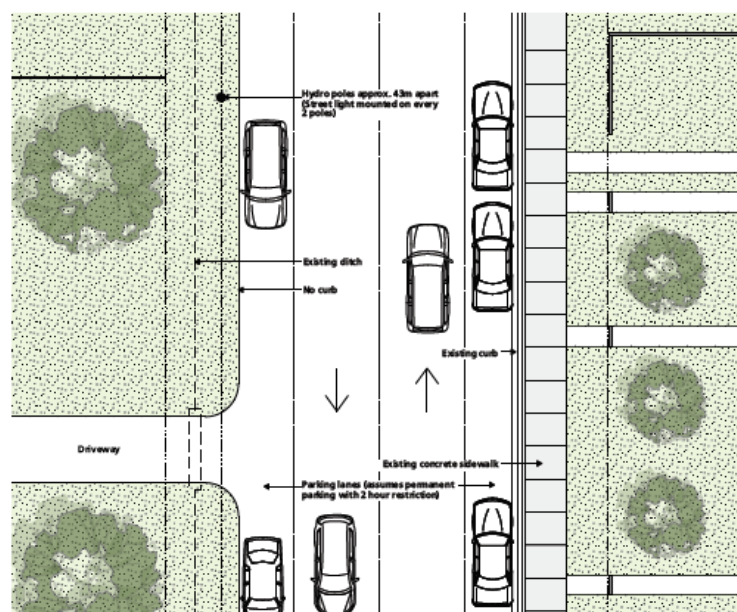
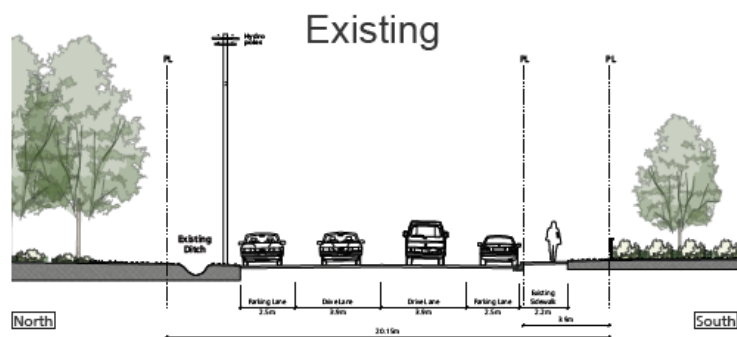
# Urban Design Strategies

## Urban Design

1. Develop a finer-grained network of pedestrian trails and pathways in the Hospital Area based on the historic Seafield Heights Plan and the existing pattern of radial streets in the Hospital Area. Focus new pedestrian connections through the Beaufort Park and the former Dufferin Elementary School site.
2. Develop a formal pedestrian trail in Koram Park linking Townsite Road and Summerhill Place.
3. Develop a formal pedestrian trail linking Dufferin Crescent and Koram Park via Duggan Road Park.



# Crescent View Drive



## Precedent Images



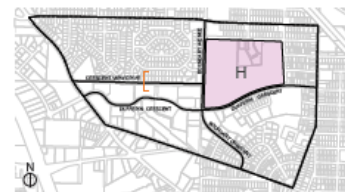
Sidewalk/Treed boulevard



Shared road

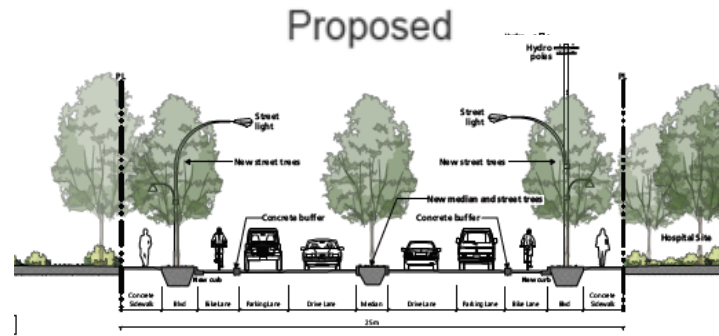
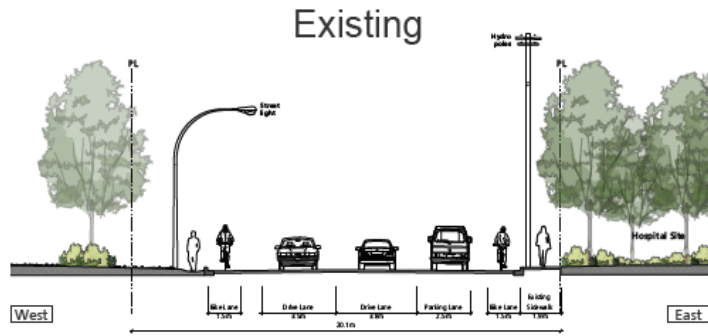


### Street bump-out with rain garden



### Street Section Key

# Boundary Avenue / Crescent



## Precedent Images



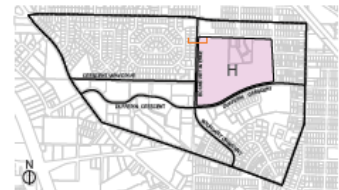
Sidewalk/Treed boulevard



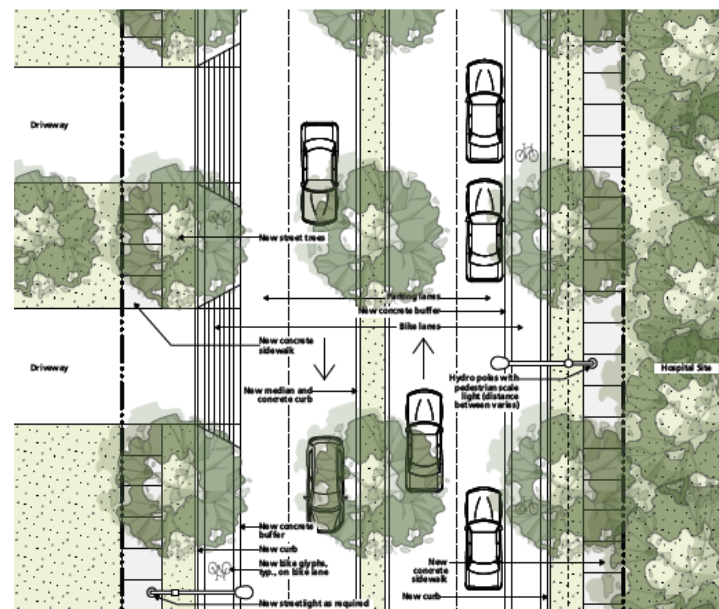
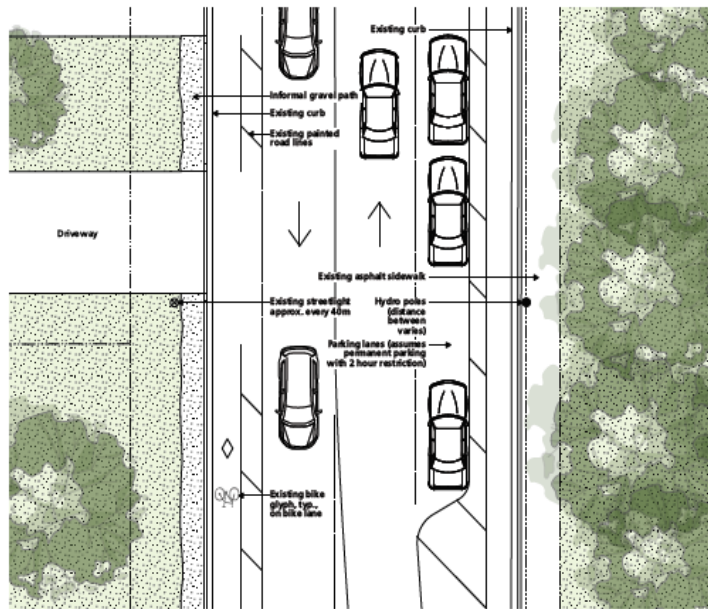
Bike lane



Street bump-out with rain garden

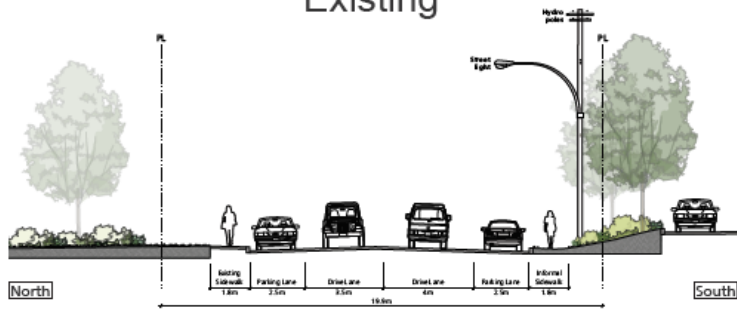


Street Section Key

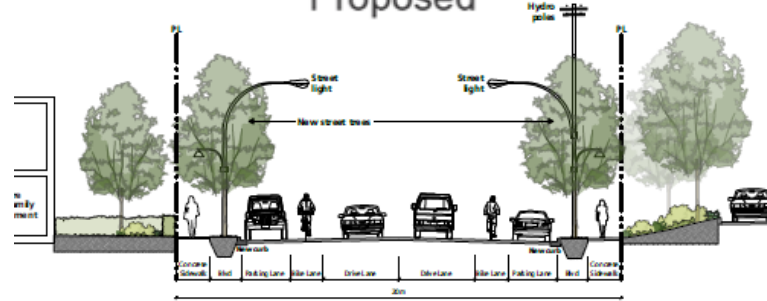


# Dufferin Crescent (West)

Existing



Proposed



Precedent Images



Sidewalk/Treed boulevard



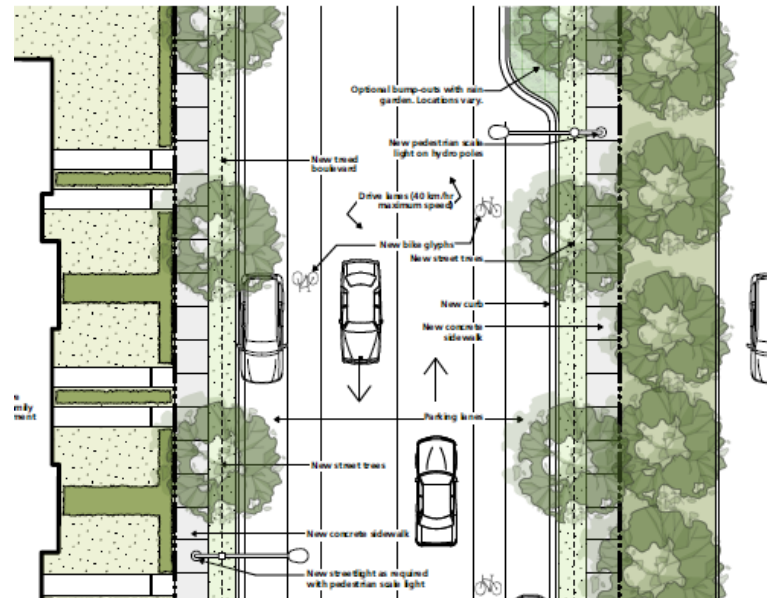
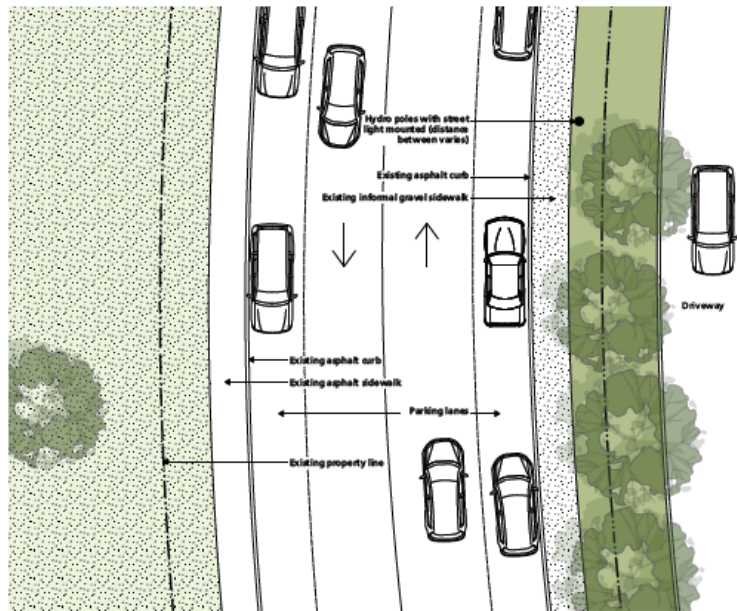
Shared lane



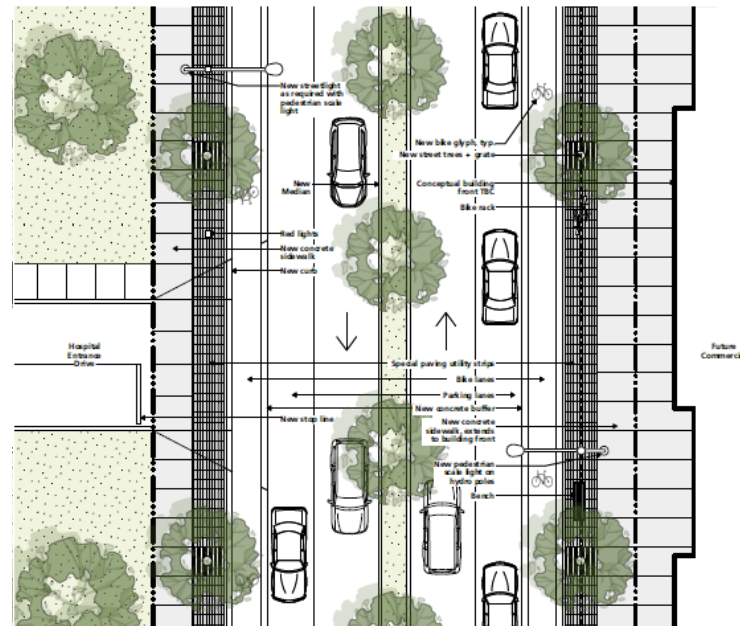
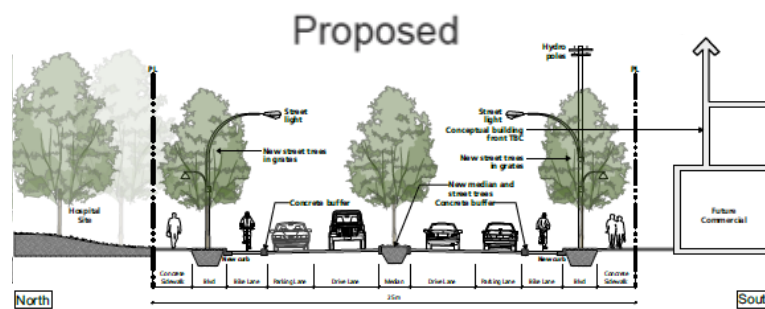
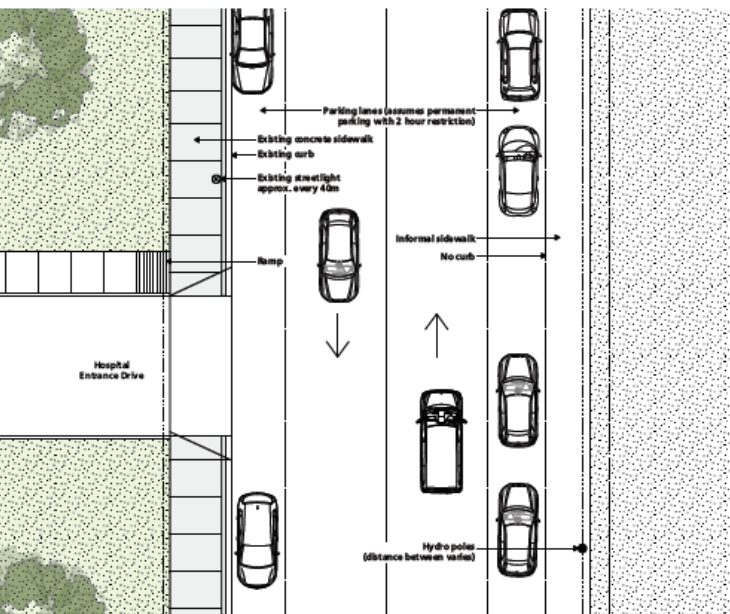
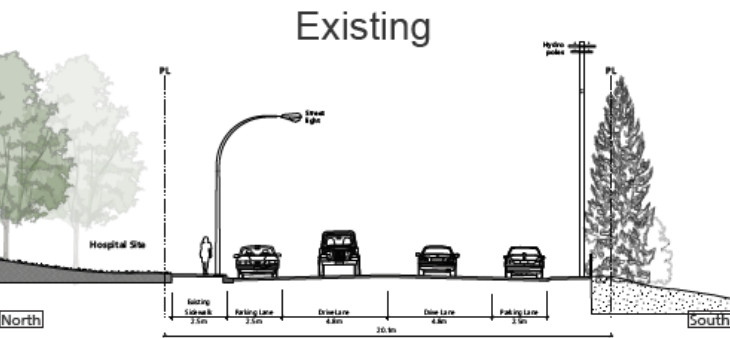
Street bump-out with rain garden



Street Section Key



# Dufferin Crescent (East) – Main Street



## Precedent Images



Paved boulevard with street trees



### Sidewalk patios



Street bump-out with rain garden



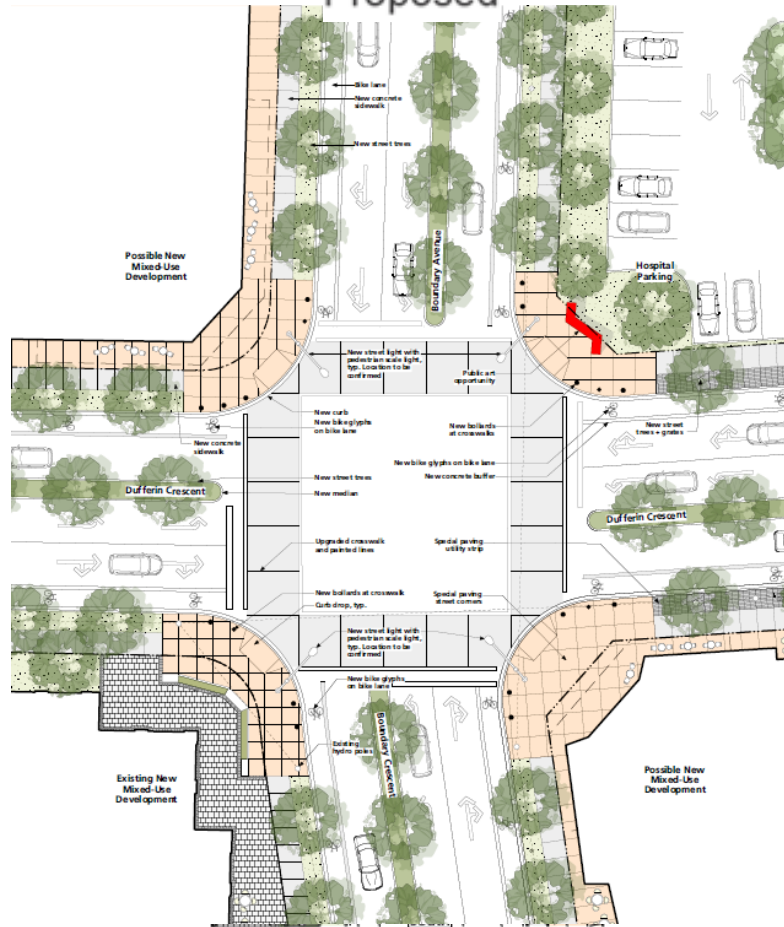
### Street Section Key

# Core Intersection

Existing



Proposed



Precedent Images



Sidewalk patios



Paved boulevard with street trees



Street Section Key



# Parking



# Parking Management



## Parking Strategy

Companion document to the Hospital Area Plan

Common development process and schedule

Unique goals and independent implementation timelines

Hospital Area Plan provides policy context for the Parking Strategy

# Parking Policies



## Parking

1. Implement, monitor, and update the Hospital Area Parking Strategy to manage on-street parking within the hospital area.
2. Direct revenue generated from parking management in the hospital area to infrastructure upgrades, initiatives, and programs that support the safe and efficient movement of non-automobile travel, including pedestrian, cycling and transit network improvements.
3. Partner with Island Health and other Hospital Area stakeholders to implement the City of Nanaimo's Parking Strategy.

# Next Steps: Public Consultation



**CPD Committee**  
Tuesday, May 15

**Council – 1<sup>st</sup> / 2<sup>nd</sup>**  
Monday, June 11