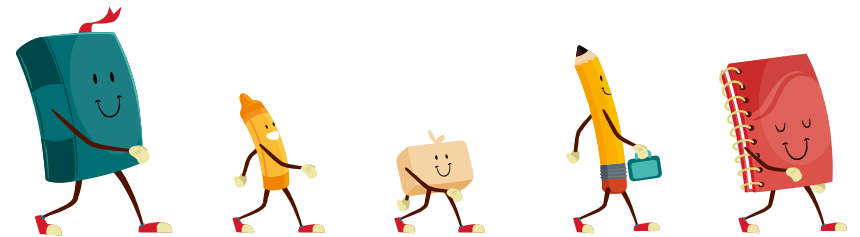




NANAIMO LADYSMITH
PUBLIC SCHOOLS

We offer a full range of programs from Kindergarten to Grade 12 and also have programs for preschoolers and adult learners.



- ▶ There are more than 14,700 students enrolled in the district
- ▶ 28 elementary schools (Kindergarten to Grade 7)
- ▶ 7 secondary schools (Grades 8 to 12)
- ▶ 1 DL school – Island ConnectEd (Kindergarten to Grade 12)
- ▶ There are over 2,200 employees
- ▶ Population of district (2016 Census): 126,047
- ▶ An overall budget of \$150 million of which \$130 million is the operating budget







PISA 2018 Mathematics Results

1.	China	591
2.	Singapore	569
3.	Macao	558
4.	Hong Kong, China	551
5.	Taiwan	531
6.	Japan	527
7.	South Korea	526
8.	Estonia	523
9.	Netherlands	519
10.	Poland	516
11.	Switzerland	515
12.	Canada	512

PISA 2018 – Reading Results

1.	China	578.7
2.	Singapore	556.3
3.	Macao	542.3
4.	Hong Kong, China	530.7
5.	Estonia	525.3
6.	Japan	520.0
7.	South Korea	519.7
8.	Canada	516.7

PISA 2018 Science Results

1.	China	590
2.	Singapore	551
3.	Macao	544
4.	Estonia	530
5.	Japan	529
6.	Finland	522
7.	South Korea	519
8.	Canada	518



Strategic Plan 2019-23



OBJECTIVES

- ▶ Continuous improvement in Special Needs, Indi
- ▶ Implement the **Learning Services M**
- ▶ Continue providing collabor curriculum
- ▶ Improve



Strategic Plan 2019-23



10 / Strategic Plan

NLPS Goals and Objectives

GOAL

- 1** CONTINUOUS IMPROVEMENT OF INSTRUCTION AND ASSESSMENT
- 2** SAFE, CARING AND HEALTHY LEARNING AND WORKING ENVIRONMENT THAT IS INCLUSIVE OF THE DIVERSITY OF OUR ENTIRE LEARNING COMMUNITY
- 3** TO BE A LEADER IN ENVIRONMENTAL STEWARDSHIP AND SUSTAINABILITY
- 4** TRUTH AND RECONCILIATION

BOARD OF EDUCATION



CHARLENE MCKAY
(BOARD CHAIR)



LISA MARIE BARRON
(BOARD VICE-CHAIR)



TANIA BRZOVIC
TRUSTEE



6 / Strategic Plan

Syeyutsus Reconciliation Framework

JANUARY 2019, THE BOARD OF EDUCATION APPROVED THE SYEYUTSUS RECONCILIATION FRAMEWORK TO GUIDE THE DISTRICT'S ATTEMPTS TO ACTION THE BOARD GOAL OF RECONCILIATION.

Truth and Reconciliation
Canada's Calls to Action,
developed over a year
by Indigenous people, informs
the district's strategic
plan of decision-

▶ The importance of seeing through mental, physical, emotional and spiritual* lenses (*Connectedness, relationships to everything, part of a larger whole.)



This strategic plan encompasses the vision and values of the Syeyutsus Reconciliation Framework. The framework will be used as an overarching, foundational principle that will guide the district throughout the life of the plan, irrespective of changes to the plan's goals and objectives.



Integrity

we act with integrity

able for
actions

law As,

as Nations



Capital Project highlights

Hammond Bay 10 classroom expansion
Completion date - Feb, 2022 - \$16,000,000

Seismic upgrades to Pleasant Valley and Cilaire
completion date - Sept, 2022 - \$18,800,000





Childcare Spaces

Location	# of Spaces
Bayview Child Care Centre	17
Cedar Elementary Child Care Centre	20
Chase River Early Learning Centre	72
Fairview Child Care Centre	23
Forest Park Early Learning Centre	76
Georgia Avenue Child Care Centre	18
Ladysmith Primary Early Learning Centre	72
Quarterway Child Care Centre	18
Qwam Qwum Stuwuwulh Early Learning Centre	38
Rock City Early Learning Centre	52



TE'TUXWTUN



BC HOUSING



NANAIMO LADYSMITH
PUBLIC SCHOOLS





K-12 Schools are in

**Remote
learning
for all**

**Remote
learning
with
exceptions**

**In-class
& remote
learning**

**Learning
groups:
full-time
in-class**

**Learning
as usual:
full-time
in-class**

Stage 5

Stage 4


Stage 3

Stage 2

Stage 1







The quality of a school/school district as a learning community can be measured by how effectively it addresses the needs of struggling students.

Wright (2005)





**NANAIMO
LADYSMITH**
PUBLIC
SCHOOLS

THANK YOU

