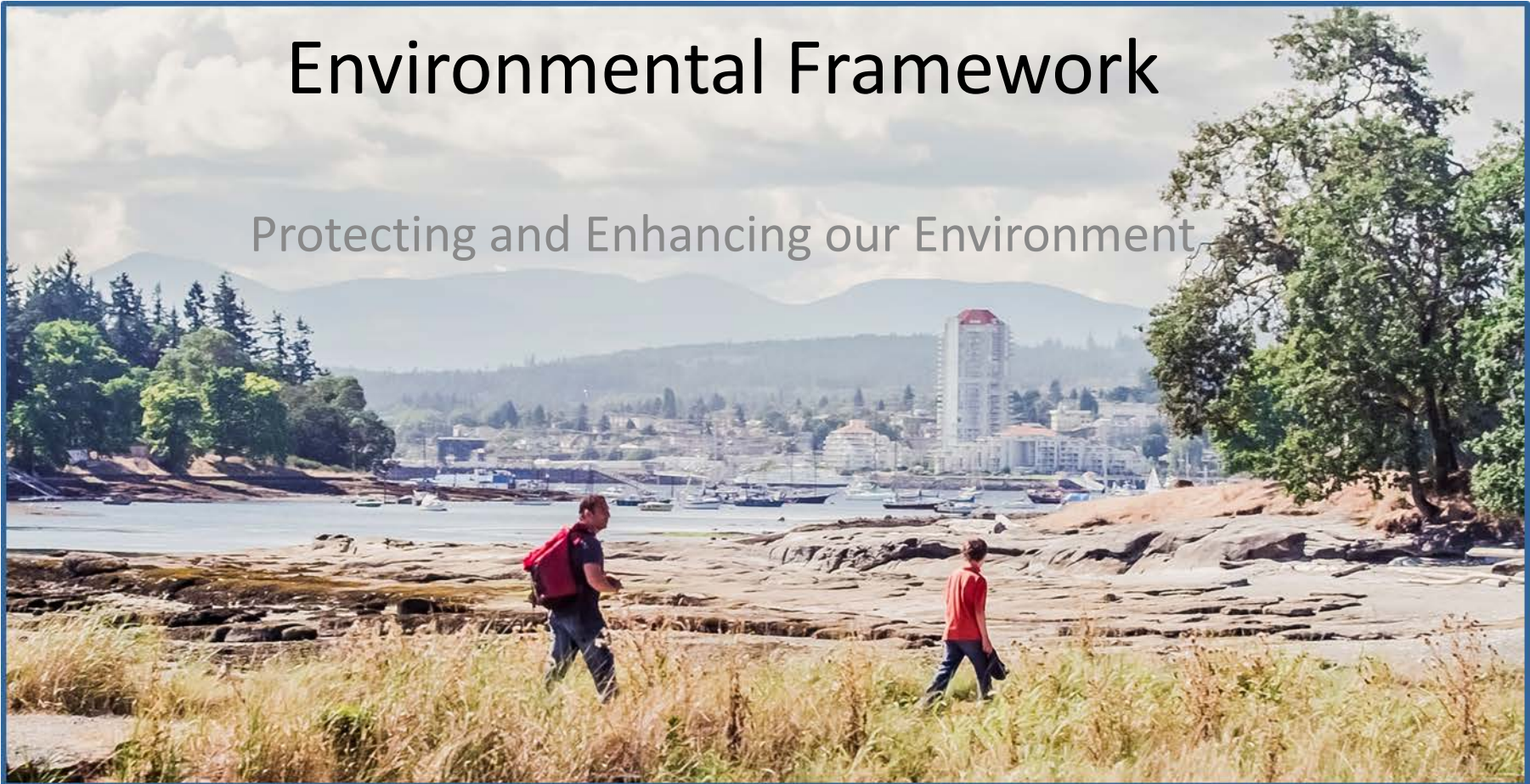


Draft City of Nanaimo

Environmental Framework

Protecting and Enhancing our Environment



Environmental Framework

Core Principles:



Climate Action



Protection and
Restoration of
Natural Spaces



Zero Waste and
Energy Management

Community Health



Community
Resiliency



Climate Action:

Plans and Strategies

Official Community Plan (2008)

Corporate Climate Action Plan (2007)

Community Sustainability Action Plan (2012)

Climate Emergency Declaration (2019)

Transportation Master Plan (2014)

Climate Resiliency Strategy (2020)

Targets

- 3% below 2007 levels by 2020 and 39% below 2007 levels by 2050

- Reduce GHG emissions by half of 2010 levels by 2030
- Reach Net Zero of 2010 levels by 2050
- Mode Share Targets (2041)
 - increase sustainable trips from 12-24%
 - Reduce average vehicle trip from 14-10km

Initiatives

Energuide assessment training - Realtor Energy Efficiency Program (2016)

Corporate Green Fleet Strategy (2020)

Step Code Implementation Strategy (2018) Update (2020)

BC Energy Step Code included in Building Bylaw (2019)

Building Energy Retrofits - CleanBC Better Homes Incentive Program (2020)

Investment in Active Transportation - Complete Streets Program



Protection and Restoration of Natural Spaces:

Plans / Strategies

Official Community Plan (2008)

Parks Master Plan (2005)

Urban Forestry Management Strategy (2010)

Invasive Plant Management Strategy (2014)

Targets

- Density Targets:
 - > 150 units per hectare (Downtown)
 - 50 to 150 per hectare (Medium Density)
- Increase our forest canopy to 32% by 2020

Initiatives

Park Acquisitions:

- Linley Valley
- Tanya Drive
- GNWD Lands
- 933 Park Ave

East Wellington Park Plan

Buttertubs Marsh Conservation Area

Partners in Parks:

Volunteer Stewardship Program (ongoing)

Tree Voucher Program (ongoing)

Departure Creek Realignment Project (2019)

Vancouver Island Beggartick Restoration Project (2016 – 2019)



Zero Waste and Energy Management:



Plans / Strategies

Water Supply Strategic Plan (2007)

Solid Waste Management Plan (2018)

Corporate Green Building Strategy (2011)

Corporate Energy Conservation Management Policy (2015)

Green Fleet Strategy (2020)

Targets

- Meet regional goal of 90% solid waste diversion by 2029

- Upgrade when there is simple payback of 8 years

Initiatives

Sort Toss Roll - Automated Curbside Collection (2016)

E3 Fleet Program (2020)

Reservoir No.1 Energy Recovery System (2012)

Beban Park Boiler Replacement (2019)

Streetlight LED Conversion (ongoing)

Corporate Energy Management Program

Corporate Anti-Idling Policy (2015)



Community Health:

Plans / Strategies

Official Community Plan (2008)

Parks Master Plan (2005)

Water Supply Strategic Plan (2007)

Pesticide Use Bylaw 2010 No. 7102
(2010)

Active Transportation Plan (2020)

Targets

- Reduce water consumption 10% per decade (426L pp/per day by 2035)

Initiatives

Steep Slope Development
DPA and Guidelines (2008)

Hazard Lands Development
Permit Area (2008)

Woodstgove Change-out
Program (2009)

Pesticide Use Bylaw (2012)

Water Conservation Strategy
(2014)

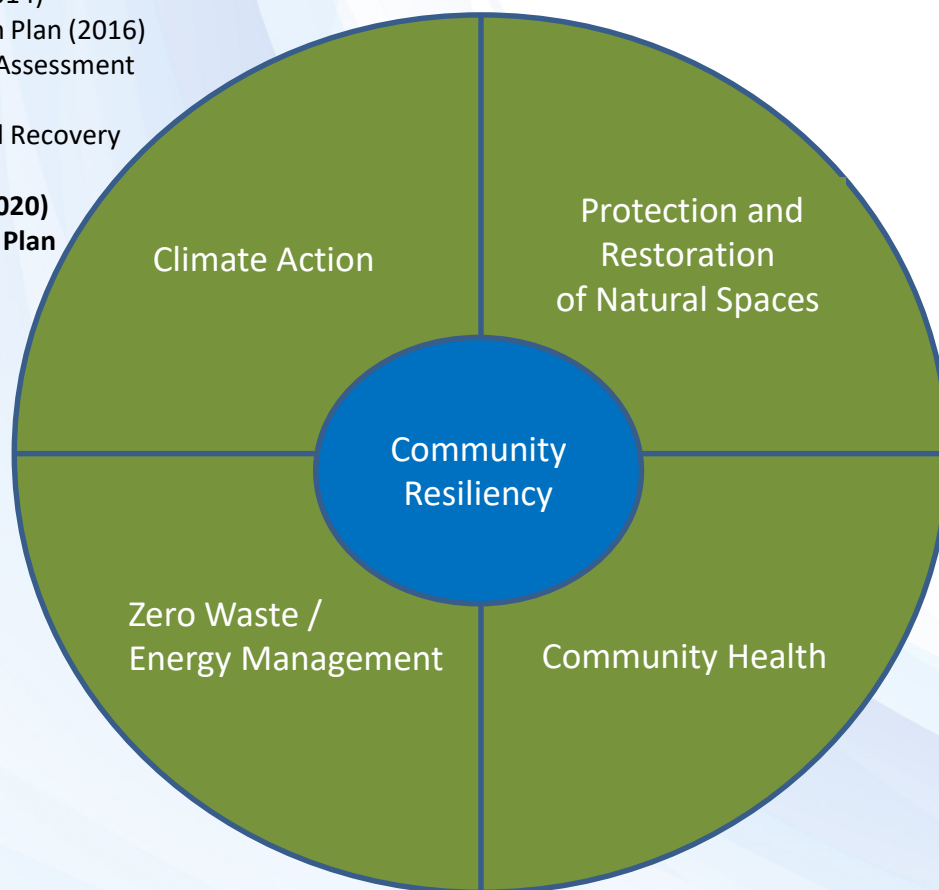
Corporate Anti-Idling Policy
(2015)

Manual of Engineering Standards and
Specs (Section 7): Stormwater
Management Guidelines (2015)



Environmental Framework: Key Policies and Strategies

- Corporate Climate Change Plan (2007)
- Community Sustainability Action Plan (2012)
- Transportation Master Plan (2014)
- Community Wildfire Protection Plan (2016)
- Hazard, Risk and Vulnerability Assessment (2014)
- 2018 Emergency Response and Recovery Plan
- **Climate Resiliency Strategy (2020)**
- **Nanaimo 2050 Climate Action Plan (2020)**



- Environmentally Sensitive Area Development Permit Area (2008)
- Urban Forestry Management Strategy (2010)
- Watercourse Development Permit Area (2012)
- Invasive Plant Management Strategy (2014)
- Partners in Parks: Environmental Stewardship Program
- **Parks Master Plan Update (2020)**

- Water Supply Strategic Plan (2007)
- Water Conservation Strategy (2014)
- Stormwater Management Guidelines
- Steep Slope Development Guidelines
- Manual of Engineering Standards and Specs (Section 7)
- Pesticide Use Bylaw
- Corporate Anti-Idling Policy (2015)
- **Active transportation Plan (2020)**
- **Parks Master Plan Update (2020)**

- Solid Waste Management Plan (2018)
- Official Community Plan (2008)
- Corporate Energy Management Policy
- **Green fleet Strategy (2020)**
- **E3 Fleet Participation (2020)**

BOLD – Currently in development



Environmental Framework: Policy Timeline

- Wexford / Walley Creek Integrated Stormwater Management Plans (2002 / 2004)
- Nanaimo Estuary Management Plan (2006)
- Water Supply Strategic Plan (2007)
- Corporate Climate Change Plan (2007)
- Corporate Energy Management Policy (2008)
- Official Community Plan (2008)
 - Steep Slope Development DPA and Guidelines (2008)
 - Environmentally Sensitive Area Development Permit Area (2008)

- **OCP Update**
- **Nanaimo 2050 Climate Action Plan**
- **Active transportation Plan**
- **Parks Master Plan Update**
- **Water Supply Strategic Plan**
- **Climate Resiliency Strategy**
- **Green fleet Strategy**
- **E3 Fleet Participation**

1990s

Provincial Fish
Protection Act
(1997)

2000s

Climate Action
Charter(2007)

2010s

Riparian Area
Protection Act
(2016)

2020s

- Streamside Protection Bylaws (1996)

- Urban Forestry Management Strategy (2010)
- Green Building Strategy (2011)
- Community Sustainability Action Plan (2012)
- Watercourse Development Permit Area Update (2012)
- Transportation Master Plan (2014)
- Water Conservation Strategy (2014)
- Invasive Plant Management Strategy (2014)
- Cosmetic Pesticide Use Bylaw (2014)
- Corporate Anti-Idling Policy (2015)
- Manual of Engineering Standards and Specs (Section 7) (2015)
- Community Wildfire Protection Plan (2016)

