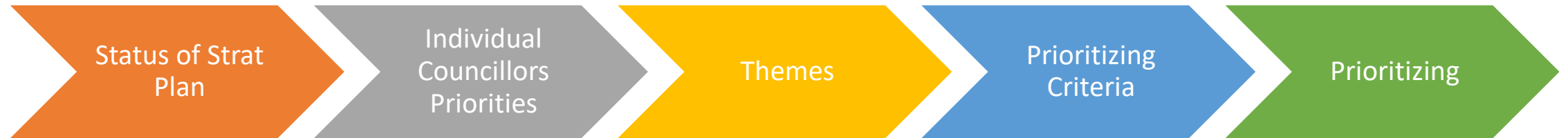


# City of Nanaimo Strategic Plan Check-In

January 27, 2020



# Today's Conversation



## Vision

To be a community that is livable, environmentally sustainable and full of opportunity for all generations and walks of life.

### Environmental Responsibility

- Environmental Leadership
- Planning for multi-modal transportation
- (7actions)

### Governance Excellence

- Structured for Decision Making
- Targeted Advocacy
- (6 actions)

### Livability

- Affordable & Accessible Housing
- Safe & Connected Community
- Opportunities for Active Transportation
- (8 actions)

### Economic Health

- Downtown
- Business Retention & Expansion
- Access to Waterfront
- (7 actions)



# Highlights of 2019 Accomplishments

## Environmental Responsibility

- Declaration of Climate Emergency
- Implementation of Env C'tee
- Boxwood Connector Site Prep
- Bruce Ave, Georgia Greenway
- Fire Station design

## Governance Excellence

- GPC
- Code of Conduct
- Reserves Policy
- Sewer & Water rates review
- Protocol & collaboration agreements
- Tetuxwtun MoU adoption
- Archeological overview assessment

## Livability

- Health & housing task force
- Seniors age-friendly city plan
- 2 additional bylaw officers
- Complete streets study
- Grant application for Theatre expansion
- Culture and Events positions

## Economic Health

- Economic Development model study
- Home-based business & inter-community business bylaws revised
- Walkway around One Port Drive



# Highlights of 2020+ Work Program Items

## Environmental Responsibility

- Synchronizing OCP review with:
  - active transportation plan update
  - parks master trail plan
  - water supply strategic plan
- Climate adaptation plan
- Green building & Green Fleet
- East Wellington Park
- 933 Park Avenue

## Governance Excellence

- Fire Dept master plan
- Parks & Rec master plan (incl. facilities)
- Levels of service discussions w Council
- Role of c'tees & task forces in decision making
- Intergovernmental advocacy
- Bylaw & policies renewal
- Asset Management System

## Livability

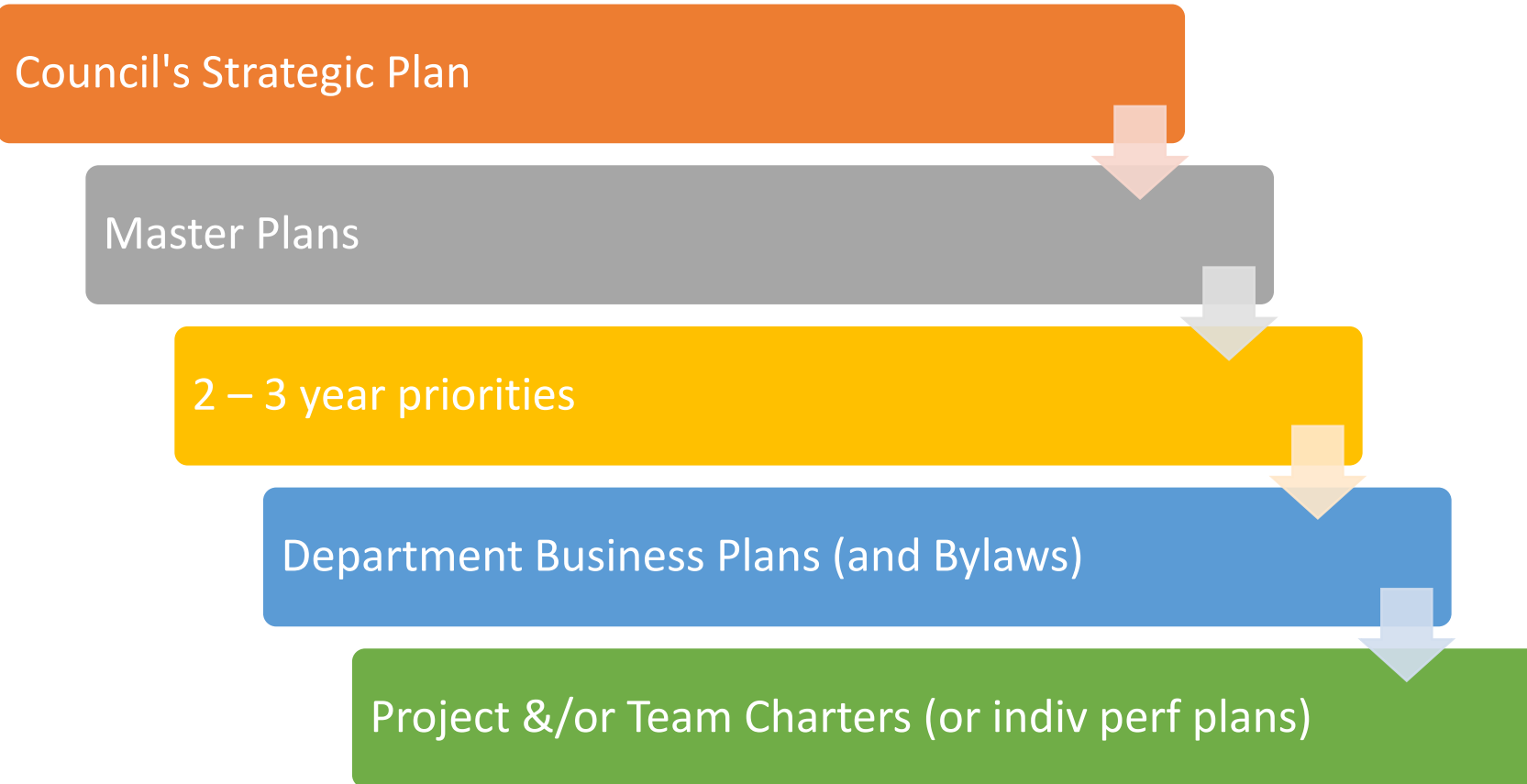
- Implementation of housing strategy
- Property management strategy
- Amenity contributions policy review
- Animal control contract & shelter
- Child care needs study
- Tribal Journeys 2020
- Greenshores options at Departure Bay, then preliminary design

## Economic Health

- Downtown short-term & longer-term actions
- Maffeo Sutton Park upgrades
- Implementing downtown mobility study
- Implementing economic development model & governance structure
- Moving forward One Port Drive



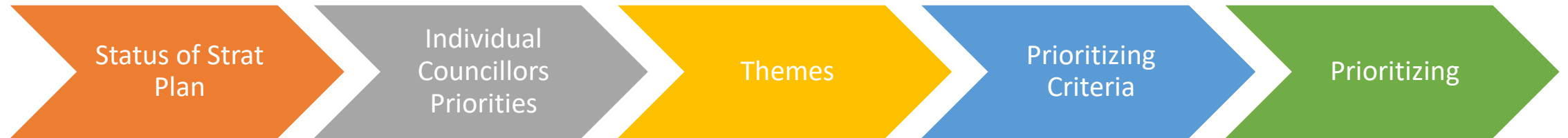
# How Council's Strategic Plan Drives the Business



# The Need for Priorities



# Today's Conversation





# Individual Member of Council Priorities



1. Be as *specific* as possible about what you wish to see accomplished



2. Describe the *benefits* to the community to completing this work



3. Articulate why you feel this project is more important than others. What *differentiates* it?



# Themes



# Potential Criteria for Determining Priorities

Non-emergency safety issue

In strategic plan and/or master plan

Breadth of impact

Resource requirements

Who else involved (internally & externally)

Consequence to existing work plans

Consequence of not doing

Urgency, sequencing, phasing

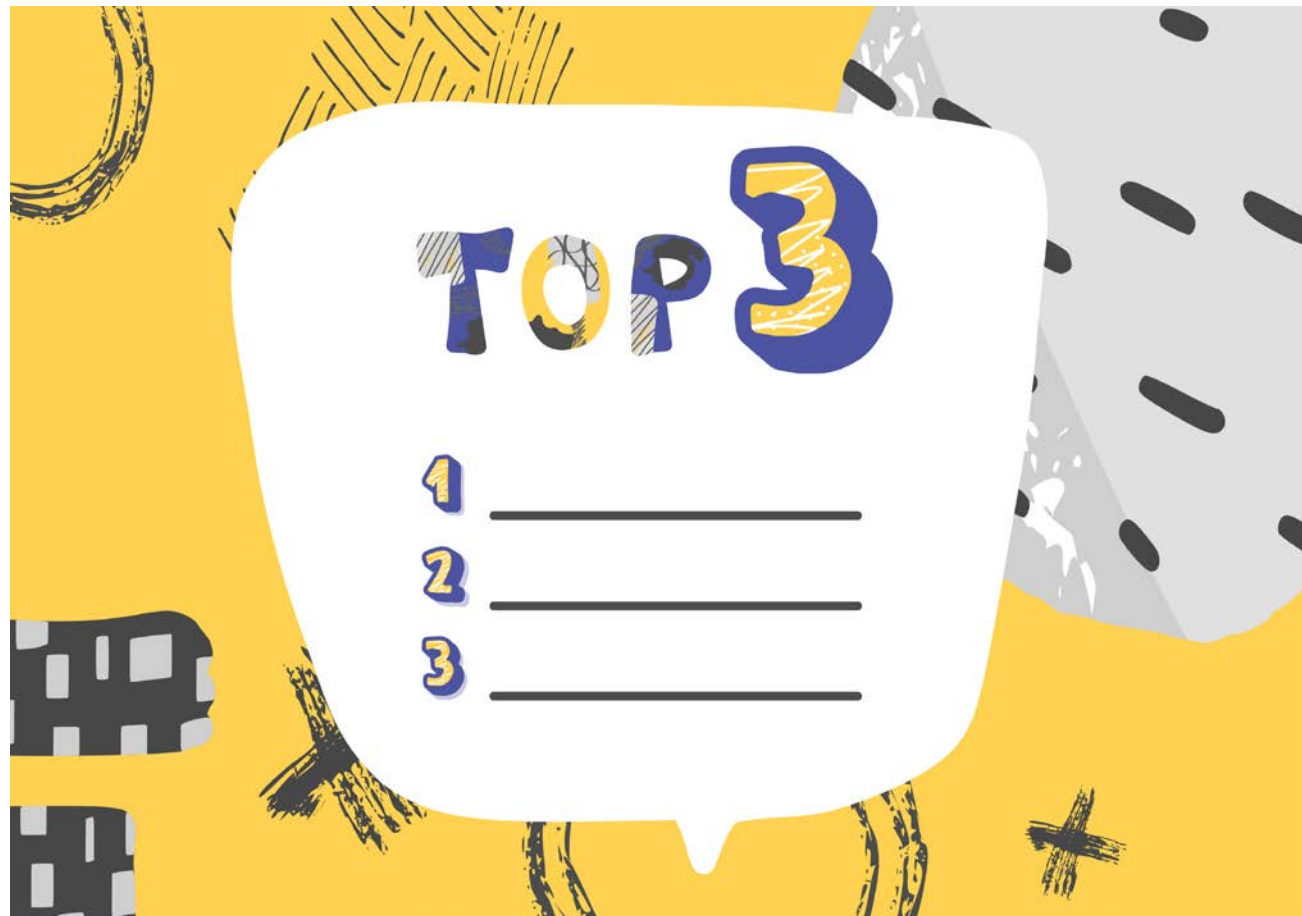
Other



One last chance to . . .



Each Member of Council's . . .



**TOP 3**

- 1 \_\_\_\_\_
- 2 \_\_\_\_\_
- 3 \_\_\_\_\_



# Survey Says . . .



# Next steps . . .

- Direction to provide a summary report to document the discussions?
- Direction to amend the strategic plan?
- Direction to amend business plans?
- Direction to continue some or all of the discussion at a later date?





**Thank You!**

