

Figure 1 - Bridge Alignment Option 1

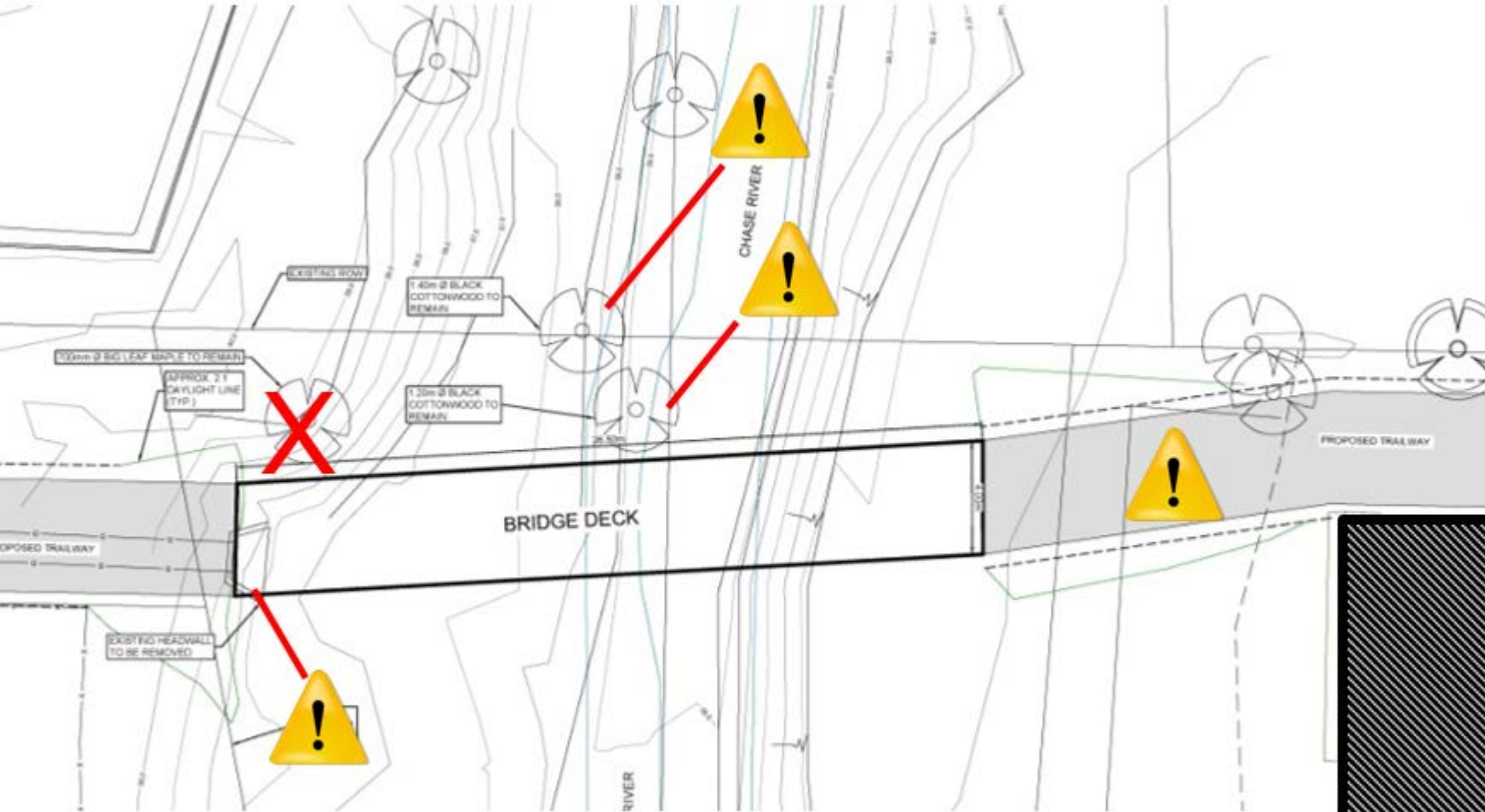


Figure 2 - Bridge Alignment Option 2

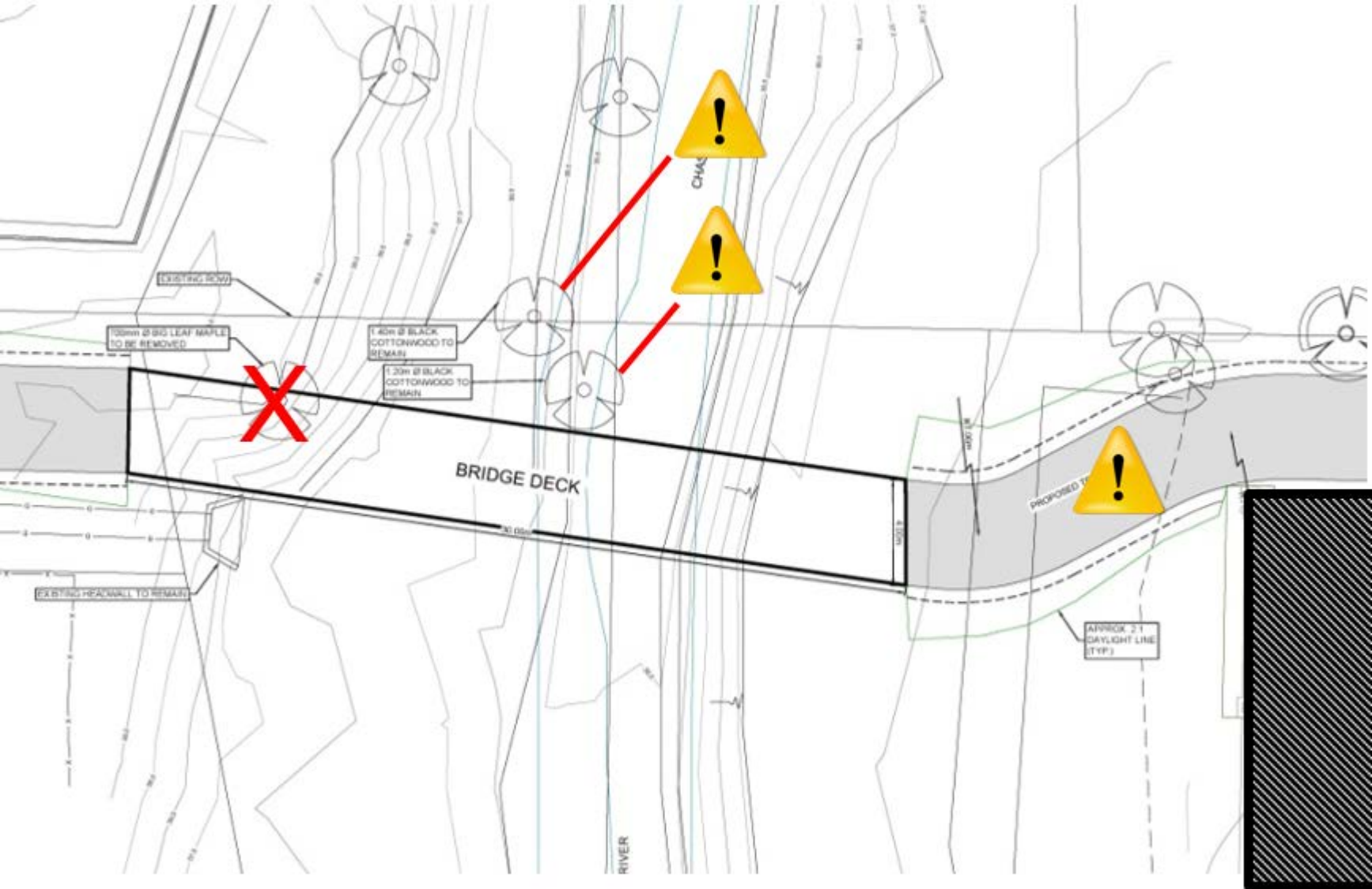


Figure 3 - Bridge Alignment Option 3

Bridge Options Summary

Based on all the engineering analysis and consultation completed, each option was assessed based on levels of impact in several categories, where high equals a higher negative impact. The table below helps illustrate the assessment.

Category	L e v e l o f I m p a c t		
	Option 1	Option 2	Option 3
	Original Straight	Over Storm	Angled with Curve
Impact to Trees within Riparian Area	high	medium	medium
Impact to Private Property	low	high	low
Impact to Fish & Fish Habitat	low	low	low
Impact to User Safety	low	medium	high
Impact to Storm Maintenance/Access	low	high	medium
Impacts to Construction Risk	low	high	medium
Impacts to RCMP ease of monitoring	low	medium	high
Impacts to approved budget	low	high	high