

TREES

Island Grown

Application for Cannabis Retail Sale Rezoning for 1483A Bowen Road

Alex Robb, General Manager and Director
Trees ~ Island Grown

May 2, 2019

A Cannabis Retail Store has been operating at 1483A
Bowen Rd. since 2014

- This location began providing cannabis to people with medical documentation as the Vancouver Island Health Advocacy Coalition in November 2014

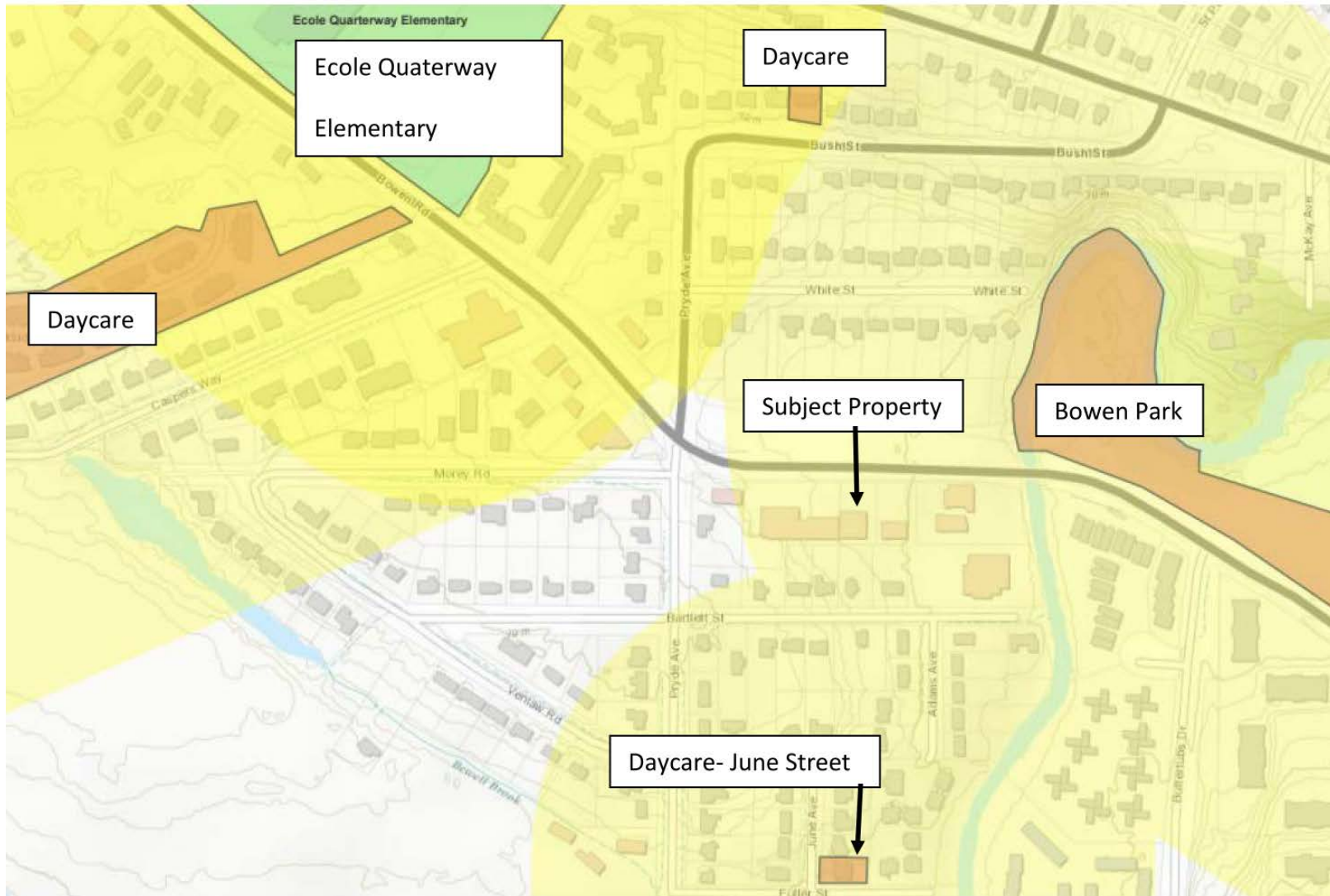


Vancouver Island
Health Advocacy Centre

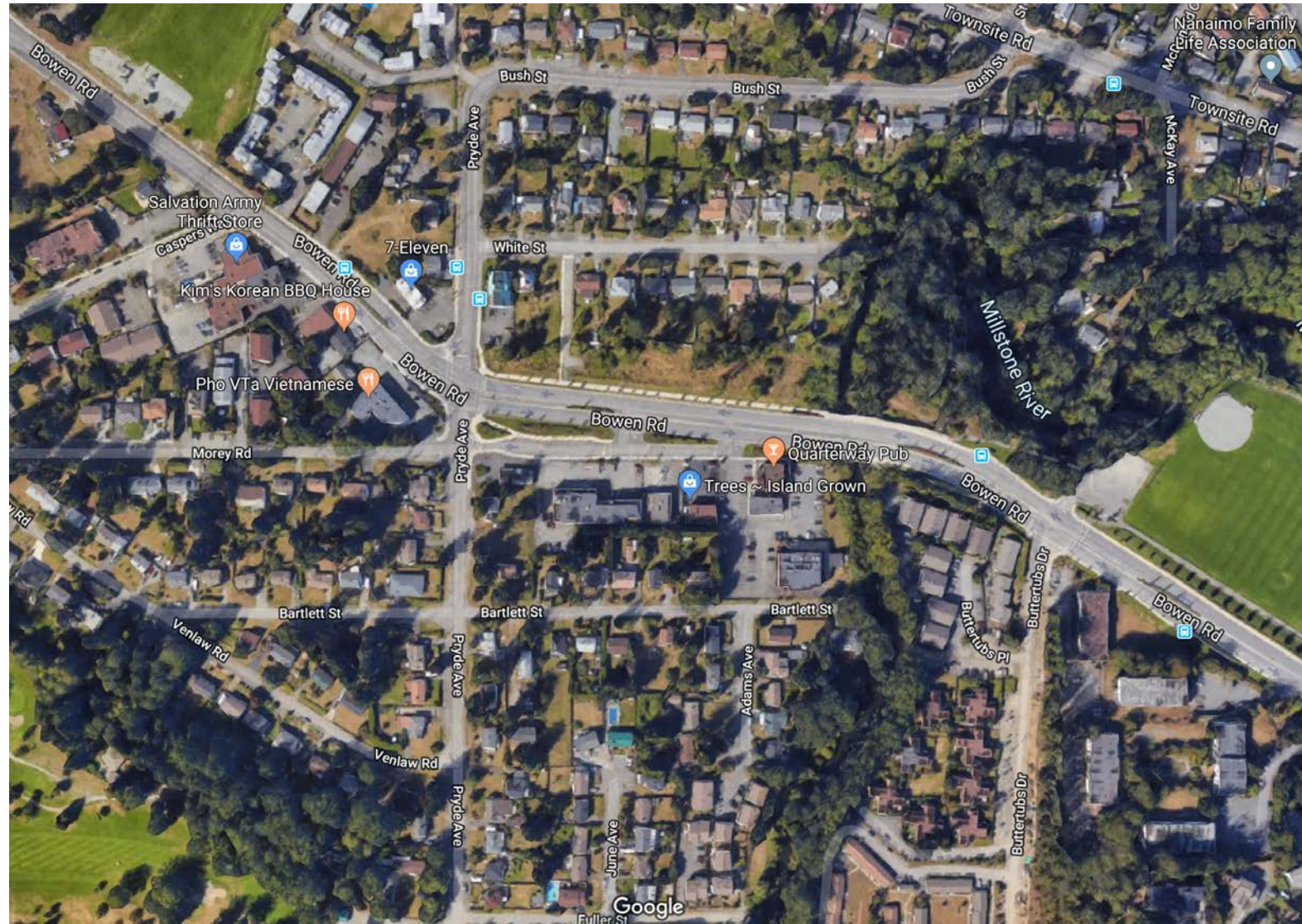
Trees began in 2015 as an amalgamation of three struggling compassion clubs; two in Victoria, and this location at Bowen Road in Nanaimo



The Location of 1483A Bowen Road



Distance from Bowen Park and sightlines to daycares



Issues relating to proximity to daycares and parks

- Although technically within 200m buffer of Bowen Park, the nearby area of park is heavily forested, and across a busy commuter road.
- Children's programming and daycare within Bowen Park is located in a building more than a kilometre from the proposed Cannabis Retail Storefront.
- Door-to-door, nearby daycares and schools are farther than 500m away.
- There is practically no visibility of the Cannabis Retail Store from the daycare and it is highly unlikely children from the daycare will visit the CRS.
- “ Therefore, [Nanaimo City] Staff support the proposed rezoning given that it substantially complies with Council's policy.”

Endorsement from neighbouring Nanaimo Athletic Club

- Upon learning of our neighbours' interest in operating a daycare facility in the Athletic Club, we reached out to the owner to obtain an official endorsement of our license and rezoning applications.

1451 Bowen Rd.
Nanaimo, BC
V9S 1G4

October 25, 2018

RE: Trees ~ Island Grown application for private non-medical cannabis retail store licence

To Whom it May Concern,

I am writing this letter to offer support to Trees ~ Island Grown in their application with the Liquor and Cannabis Regulation Branch for a private non-medical cannabis retail store license.

I am the owner of NANAIMO Athletic Club

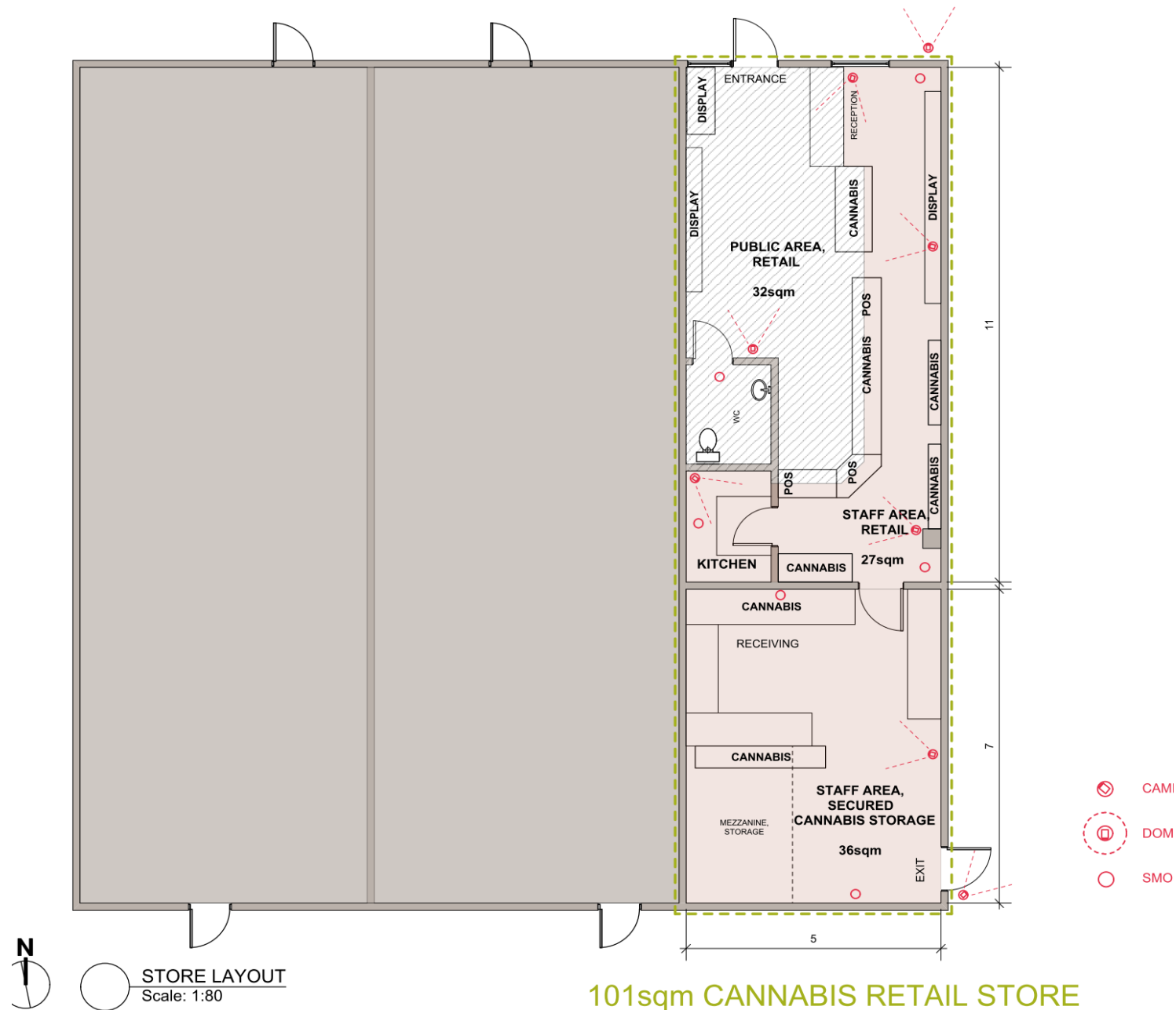
We have been neighbours of Trees ~ Island Grown since they opened in November 2014. In that time they have been respectful and polite neighbours, and there have been no nuisances created by their operation. I have no objections to the local government and provincial government licensing our neighbour for non-medical cannabis retail sales.

Sincerely,



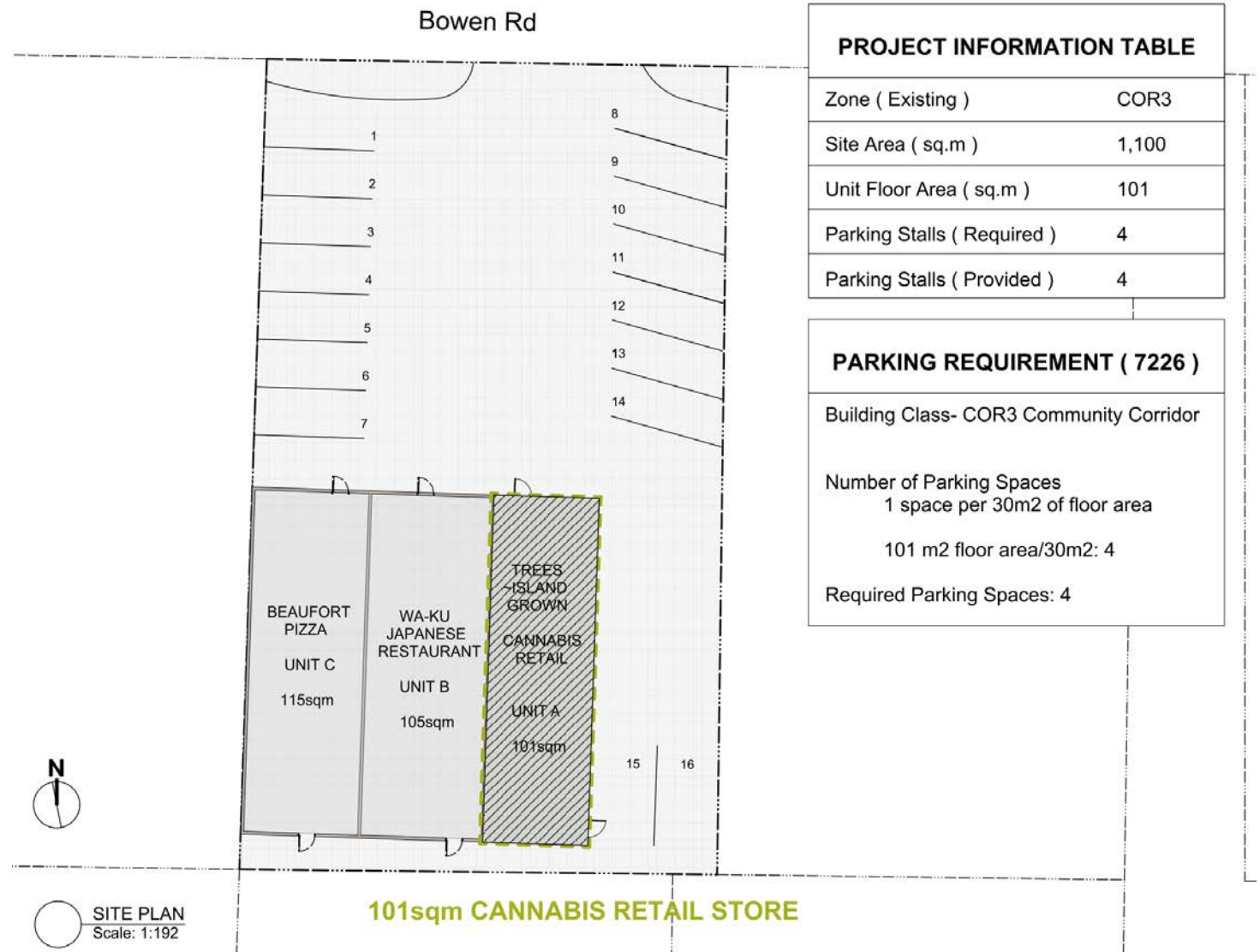
The Site and Building

- Security cameras on exterior near all entrances and interior spaces with footage kept for 30 days
- Motion detectors and motion activated exterior lighting
- 24 hour third party security system and intrusion detection monitoring



Siteplan and Parking

- There is plenty of parking, and the site is conveniently accessed off the Bowen Road Corridor
- The neighbourhood is an appropriate business location adjacent to restaurants, autoshops, a liquor store and the Quarterway Pub



View from the Outside



Community Impacts

- Trees has been a longtime supporter of charities and social service groups in Nanaimo, specifically that work on issues of food security, housing and homelessness, and harm reduction
- Active supporter of Loaves and Fishes Food Bank, AIDS Vancouver Island, Wisteria Community Association, and Foodshare.
- We look forward to giving \$10,000 as a community contribution to support the recently established food forest within Beaufort Park.

Trees Believes in Supporting Food Security Charities



Groups that Trees has Donated to or Supported



Adams Lake
Indian Band



FIRST
UNITARIAN
FELLOWSHIP OF
NANAIMO



Nanaimo Women's
Resources Society



United Way
Central & Northern
Vancouver Island



Anawim House
Empowered People Embracing Life



Thank you for your
Consideration

