

2019 City of Nanaimo Transportation





What does the Transportation Department do?

Strategic Planning

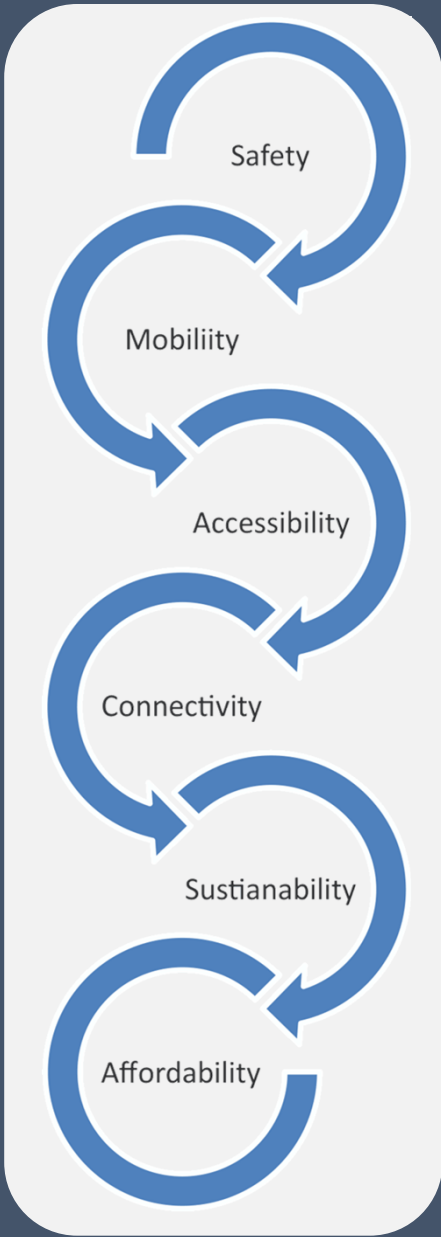
- Policy Creation
 - Transportation Master Plan
 - Active Transportation Plan
 - Design Standards
- Project Planning and implementation Strategies
 - Mobility Studies
 - Parking Studies
 - Corridor Concept Plans

Transportation Management

- Daily enquiries
- Traffic Calming
- Localized Corridor or intersection issues
- Education and Enforcement Campaigns
- Active and Sustainable Transportation Promotion and Marketing

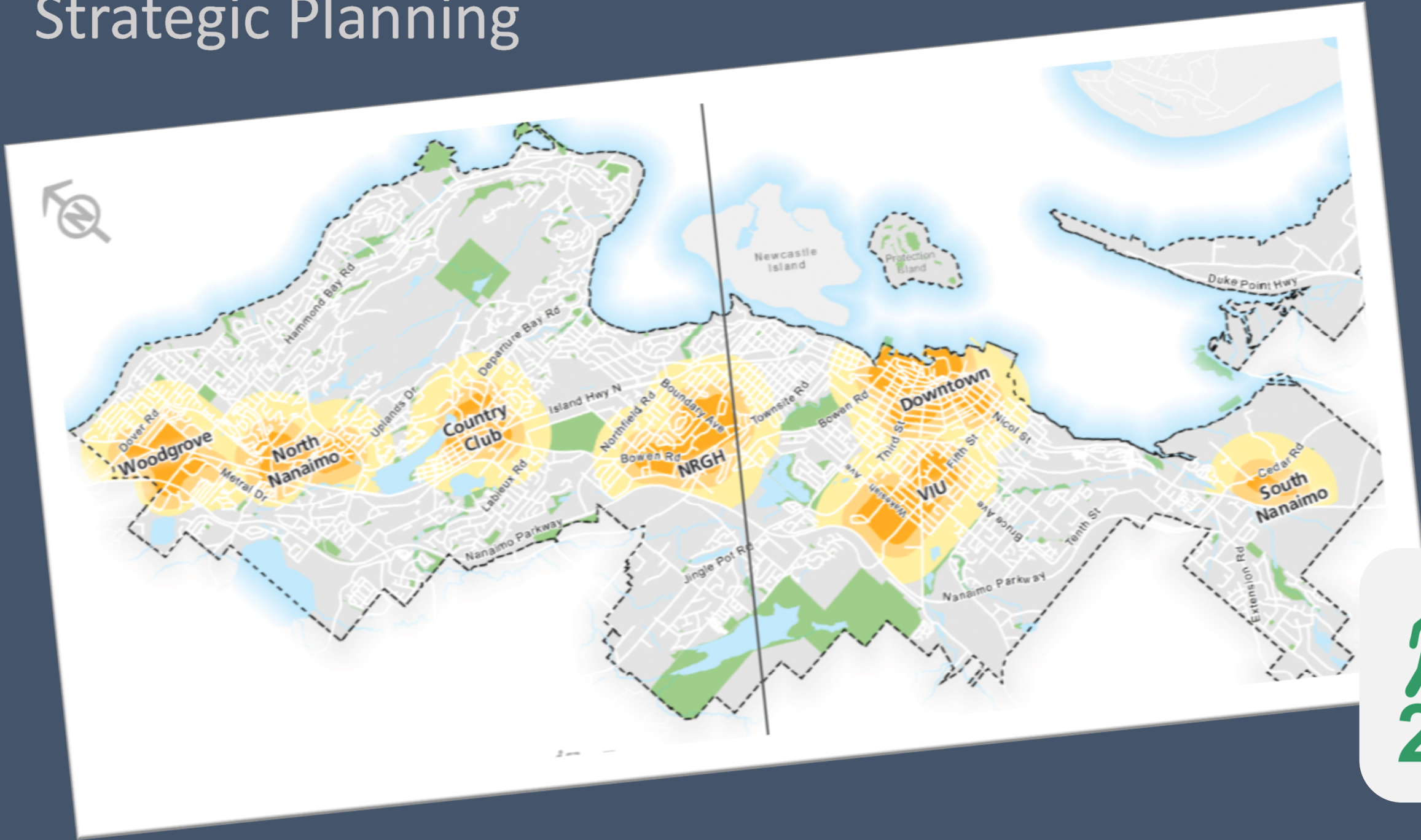



Transportation Principles and Priorities







Strategic Planning



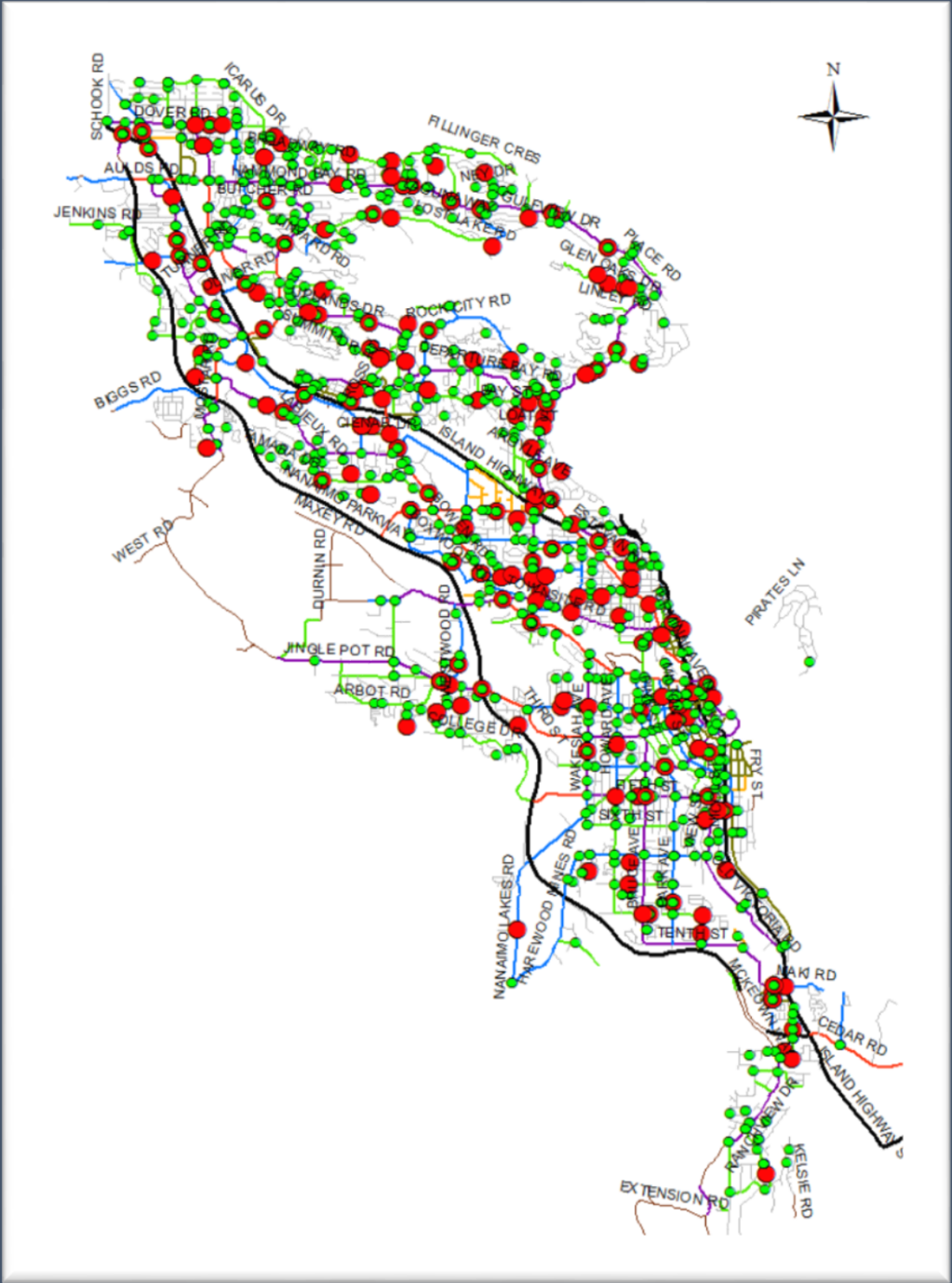
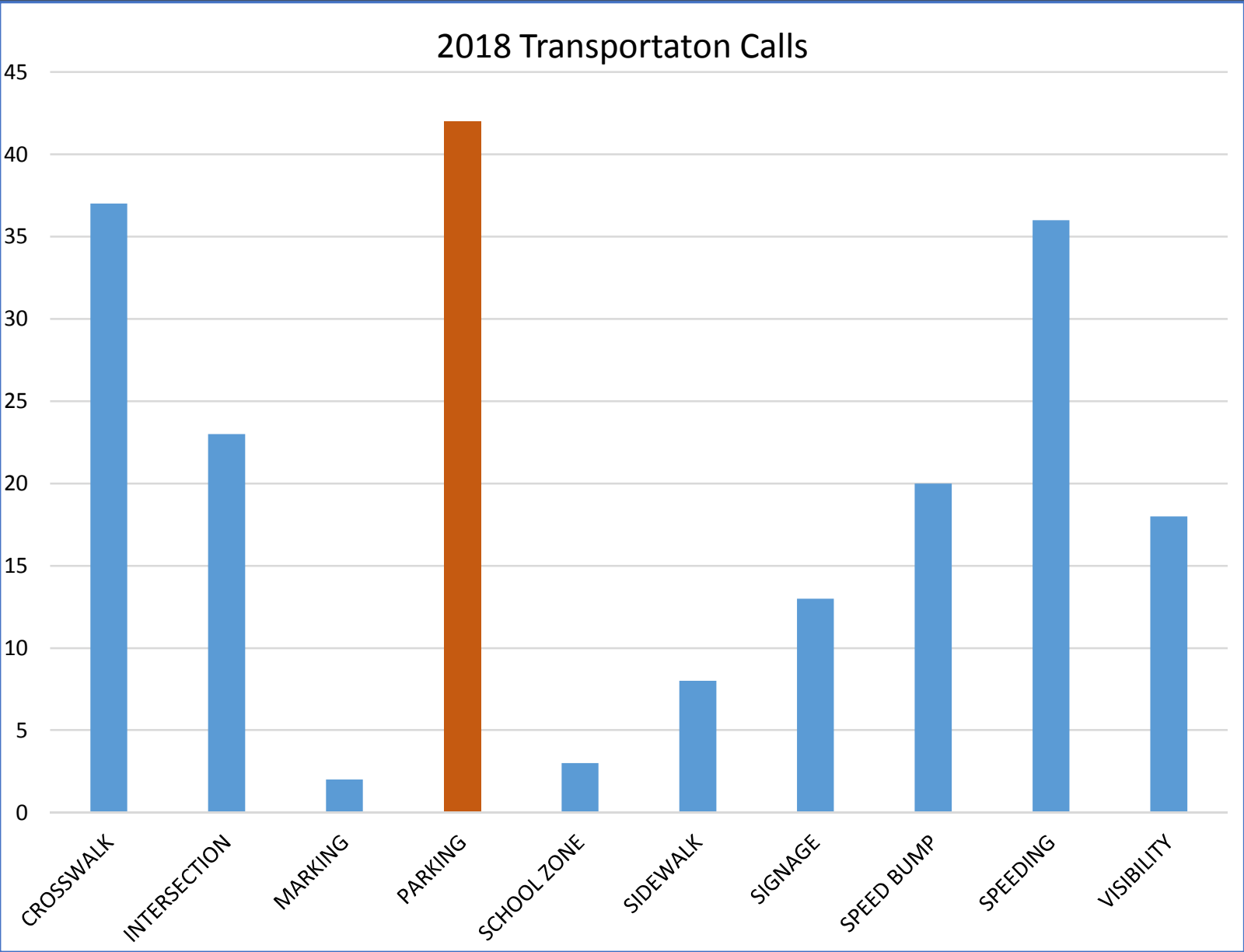

2x


5x


5x



Transportation Management





Education & Engagement



*Graphic Developed by North Vancouver School District



Promotional & Lifestyle Events





Background of Transportation in Nanaimo

- Downtown has the characteristics of an old City.





Then and now...

- Most of Nanaimo was developed under Improvement Districts.





Transportation Challenges and Opportunities

Challenges

- Evolving Community priorities
- Resources
- Implementation Strategies

Opportunities

- Collaboration
- Support from Senior Government (grants)
- Advancements in Tech.





Past Projects

- Bowen Road, sidewalk and bike Lanes
- Boundary Cycletrack
- Harewood Bikeway, Phases 1-3
 - Bruce, Fifth to Seventh
 - Bruce, Fourth to Fifth
 - Pine, Bowen to Bruce
- Dover – Turner Road Bikeway
- Victoria Road, sidewalk and bike lane,
- Six new transit shelters

Year	Expenditure
2014	\$681,921.62
2015	\$1,321,293.67
2016	\$764,259.78
2017	\$359,203.55
2018	\$1,261,973.86



Current Projects

Plans and Studies

- Complete Street Standards
- Downtown Mobility Project
- Corridor Concept Plans
 - Wakesiah Avenue
 - Metral Drive
 - Stewart Avenue
 - Terminal Avenue (St George to Brechin)
- 4th/Albert Street to Bruce Avenue
- Boxwood Corridor
- Boxwood Connector
- Street Lighting Level Assessment
- ARTS Toolkit Development

Construction 2019

- Georgia Greenway
- Bastion Bridge seismic upgrade
- Wellcox (1 port Drive) Access
- Jingle Pot at Westwood Traffic Signal
- LED Street Light Phase 2
- Harewood Bikeway (Bruce 3rd – 4th)
- Boxwood Connector Site Works



Looking Forward

- Roads are not being designed to just move cars, but to move people
- Supporting mobility is not just about building more infrastructure
- The more information we can gather and share the better

