



Park Watch

**“We can all work together to ensure Beban Park remains a positive asset
and a safer space for our community and
all the children and athletes who love to play there”.**



Appearing as a Delegation to present report & findings to
Nanaimo City Council on January 28th, 2019

Beban Park Watch: Safety Planning Action Group

Who is Beban Park Watch?

Park Watch was created by fellow community members who are also members of the various non-profit organizations located within Beban Park in Nanaimo, B.C. on January 5th 2019. We came together to discuss various concerns that our children and families are facing at Beban park and strategize possible solutions. One element that was implemented following a community group gathering was creating a Facebook group to continue discussions and develop strategies in hopes of building a stronger partnership with the City of Nanaimo to ensure the safety and well-being of the Citizens who love Beban Park.

There were two components of the group that was initiated:

- 1) The creation of a closed working group, in order to ensure desired outcomes of gathering information and recommendations to present at a City of Nanaimo Council meeting. The closed group called “Beban Park Watch: Safety Planning Action Group”, currently has 29 members. Park Watch is inclusive and welcomes all the members from the organizations within Beban Park and has encouraged and received feedback from some of them. The majority of the active working groups however are members of Nanaimo BMX and the Stevie Smith Bike Park.
- 2) Park Watch created an open public page utilized to create awareness, encourage community involvement, gather information and provide information to concerned citizens that love Beban Park. As of January 14th 2019, we currently have 232 Facebook followers on our public page and continue to grow significantly each day. Our posts have been shared on various other Facebook public forums, which brings an increase of community attention and support to our focus.

The current focus of the group includes the following elements:

- To encourage connection and build relationships with all the organizations within the park, the athletes, other participants and our neighbors in the surrounding area.
- Utilize the strengths and connections of our community members, to create and advocate for tangible, realistic planned solutions and support from the community, the RCMP and the City of Nanaimo.
- Encourage all organizations who use the property to complete their own Community Safety Audit to help guide the development of strategies and a list

of security needs, which a working group will present formally to Nanaimo City Counsel, as a collective group at Beban Park.

- Gather and track information about criminal incidents within the park, including damage and/or vandalism in a cohesive formal way to better inform the City of Nanaimo and the Province of BC the gathered concerns.
- Encourage participation from all community members to take an active role in being vigilant and reporting incidents to the RCMP and then to Park Watch.
- Utilize open and transparent communication with all community members about planning, progress, and the action being taken to address the safety concerns at the park.
- This group is meant to be solution focused to plan and address safety concerns for the children, youth, families, athletes, and participants who utilize the non-profit organizations at Beban Park.

Park Watch has reached out and received supportive feedback from various members of the community, other Beban Park organizations, Nanaimo's Mayor, members of Nanaimo City Council, RCMP, and VIU.

Our hope is to continue to build these relationships and continue to build partnerships within the city to better support our local organizations.

Great things about Beban Park

According to the Beban Park master plan which was updated in 2015:

“Nanaimo's Beban Park is the community's largest, city-owned recreation campus. At just under 130 acres, it features key indoor recreational facilities, more than twenty outdoor amenities, and large open spaces. The sixty year old site continues to be considered a potential site for additional and enhanced recreation facilities. It serves a local and regional focus and must continue to evolve and adapt with the changing community. With eyes on tomorrow, and to ensure the park preserves its role in local and regional recreation, Beban Park must continue to keep pace with the community.”

Stevie Smith Bike Park & Marie Davidson BMX Track

Nanaimo BMX has a local membership of approximately 350 riders who live in the mid-island area between Coombs and Duncan. Riders, as young as 18months to as “young at heart” as 70,

race 2 days a week leading into the summer and participate formal practices once a week in Nanaimo. Furthermore, Nanaimo BMX hosts top racing competitions which brings in thousands of tourists each season. The season runs from the end of March to the beginning of October. However, the track is open year round and is available for all the community to utilize at their leisure. Children and adults proudly bring attention to Nanaimo BMX by proudly identifying their home track while they travel across North America to compete. Nanaimo BMX is known in the BMX community to develop top professional athletes.

Steve Smith Bike Park was opened on August 9, 2017. The bike park hosted the only Canadian stop for the Red Bull Pump Track World Championship qualifier in August 2018, which brought riders and fans from around the world to compete. Red Bull Championship will be returning again this coming season. International track builder, and the organizer of the series, Claudio Caluori, was quoted in Nanaimo News Now as saying “Don’t underestimate your city. It’s awesome. You do have one of the best tracks worldwide so for us it was never a question where the Canadian stop should be”. Children are being inspired and mentored by local experienced riders who are seen out at the park doing flips and tricks, which encourage our youth, children and adults to practice, stay healthy and have fun. Several former Professional riders have now relocated to Nanaimo with their families to be close to this facility.

The opportunity for tourism, and increased local engagement with the two facilities alone within in Beban Park is incredible.

Other Organizations within Beban Park

- Equestrian Centre: Nanaimo Equestrian Association
- Vancouver Island Exhibition Grounds & Community Gardens: Beban Urban Garden Society
- Lawn Bowling
- Golf
- Merle Logan Field: Nanaimo United Soccer
- Boys and Girls Club Daycare Center

Current Concerns at Beban Park

As most of Nanaimo is aware, there has been a new wet housing development that has opened by BC Housing, and is located at the City Public Works yard on Labieux Road. The housing development is directly across the street from the Nanaimo BMX track and Stevie Smith Park within Beban Park. Community members who are involved with the various organizations within the park have reported to our group about their concerns’ relating to an increase in vandalism, break and enters, theft, garbage, and general disarray of the park, to a level that has not been seen before at Beban Park. There has been one known physical assault on a child, which was reported

to our group, after an adult male attempted to steal the child's bike while he was riding at the park.

Although we cannot confirm that the residents of the housing unit are responsible to the state of the Park, the correlation to the opening and the damages to the Park are strong.

Multiple public Social Media posts and related comments indicate that local Nanaimo community members have been avoiding bringing their children to play at Beban Park.

As for Nanaimo BMX and Stevie Smith Bike Park, it is a crucial time for these organizations that have remained consistently busy over the winter months and who are about to begin their high season. Parents are concerned that during upcoming race nights, they will be vulnerable for bike theft. Bikes used for race and competition for adults and for children, are costly and generally thousands of dollars. There is considerable concern from parents who have reached out, that their young children have a heightened risk to being exposed to biohazards. The washrooms that are opened during racing events are another worry as they are away from visibility as they are located across the parking lot.

There has been no formal announcement, from the City of Nanaimo, that would allow the community members to be informed of the City's action plan to address the concerns in the surrounding areas of the housing, which continues to leave community members feeling a lack of action that builds frustration. Upon engagement and conversations with City Managers and organizations within the Park, there have been meetings held in October 2018, however the feedback from some of the organizations was that their concerns were minimized and solutions were not offered.

Park Watch has since met with Darcie Osborne, the Park's manager, Craig Robertson from Parks operations, Walter Taylor, Bylaw Officer, and Cst. Dave Scherr, from Nanaimo RCMP who is currently the liaison between Beban Park and the housing on Labieux Road. The outcome of this meeting on January 17, 2019 was very positive. They were able to share with us the concerns they too are noticing and how they have started to action various strategies to help address the concerns. The group, as a whole, were able to go through Park Watch's initial list of recommendations and discuss options to begin to take action.

Park Watch Action & Desired Outcomes

Park Watch gathered with approx. 20 community members to complete a "walk the park and assess" event on January 12, 2019. Park Watch organizers requested photographs (APPENDIX A) and provided the attendees a survey to complete titled, "Checklist for safety audit for crime prevention in Beban Park" and we combined the results (APPENDIX B). From the completed forms and various submitted photographs, we were able to gather various perspectives about safety around the Park as well as develop recommendations that would enhance the safety of the

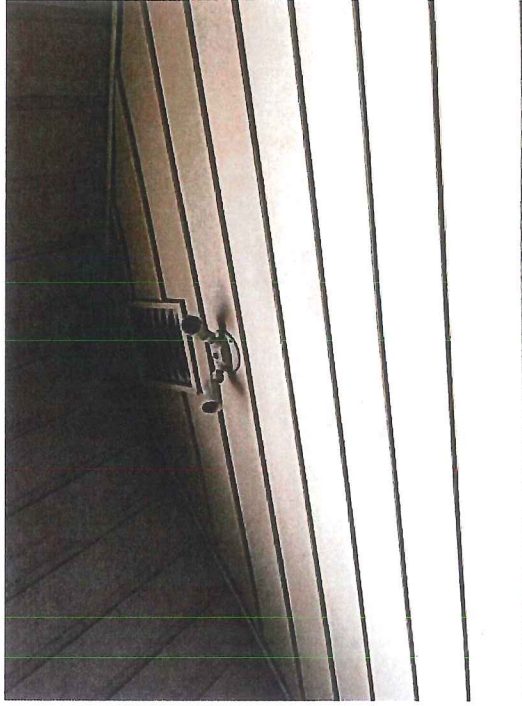
park. Several attendees gathered additional surveys to pass along to other's who may not have been able to attend the event.

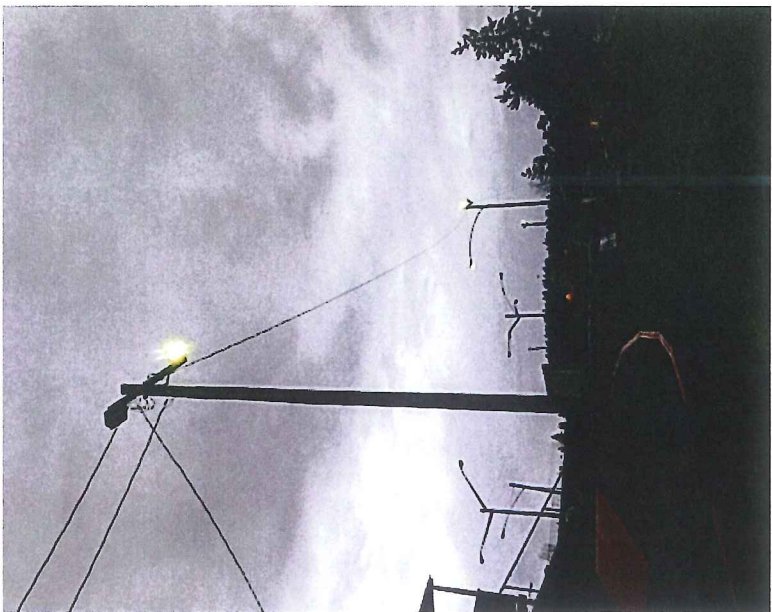
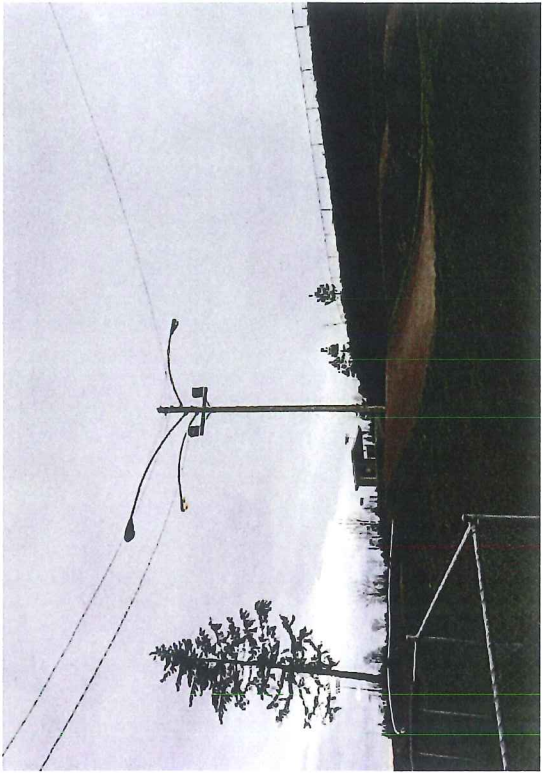
The safety audit for crime prevention focused on Lighting, Signage, Sightlines, Isolation, Human Activity, Maintenance, and Social Concerns. Although the results from the survey are more specific to the two bike parks, the recommendations could be utilized throughout Beban Park as they are transferable to various areas dealing with similar environments and facing similar concerns.

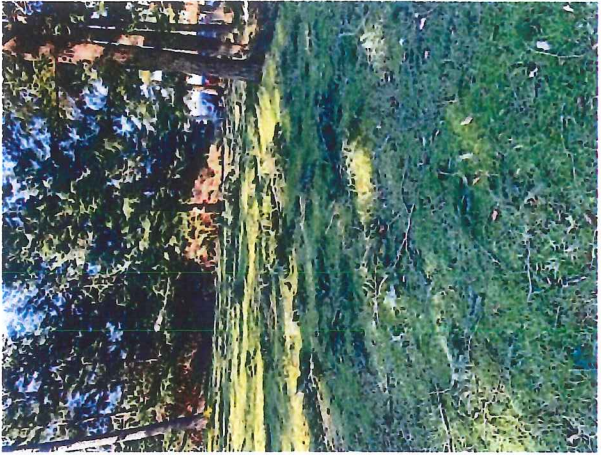
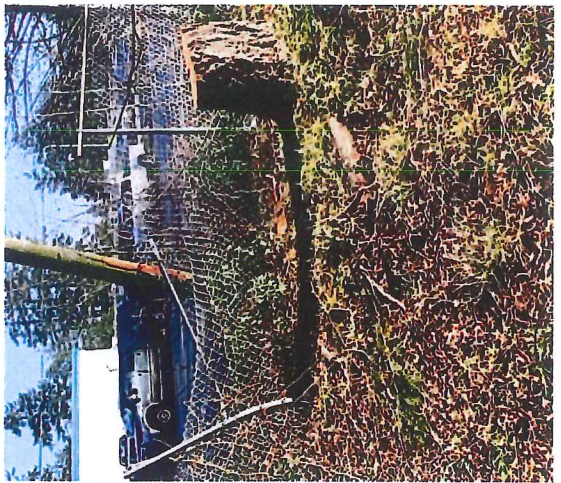
Park Watch has completed an in-depth list of safety enhancement recommendations for the City's consideration (APPENDIX C). Park Watch incorporated the results from the safety audits as well as recommendations and ideas that were communicated to our group separately by various community members.

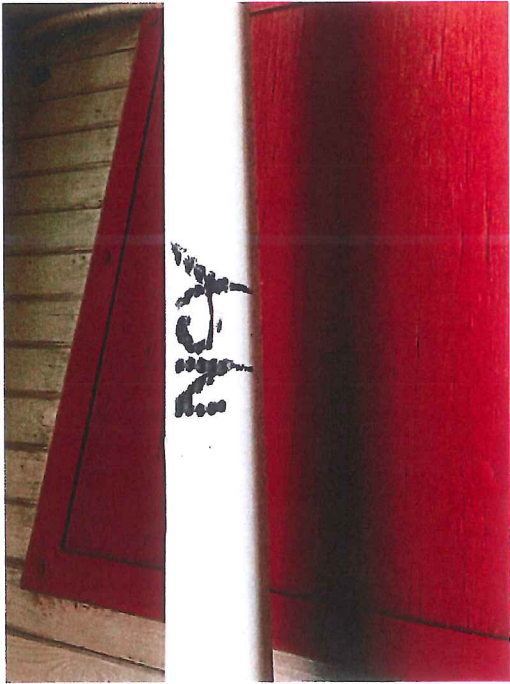
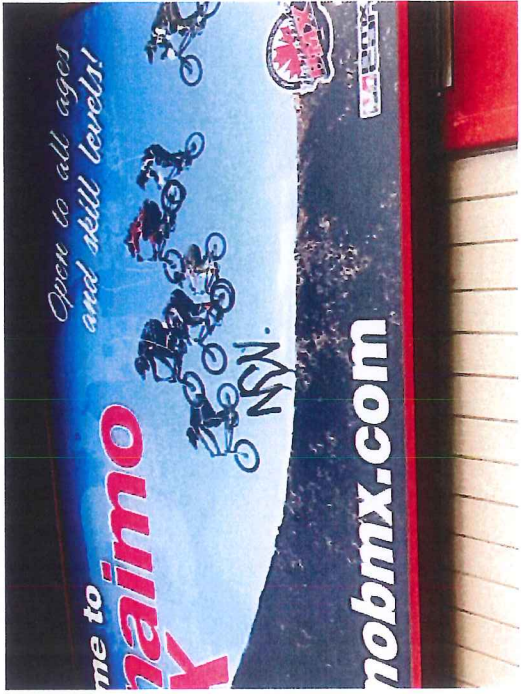
It is Park Watch's hope that Nanaimo City Council and the City Parks department are able to review our recommendations and allocate funding and create budget changes as needed in order to implement the recommendations as soon as possible. Park Watch is looking forward to building stronger relationships with the City and the organizations within the park so that we can all work together to ensure Beban Park remains a positive asset and a safer space for our community and all the children and athletes who love to play there.

Photos from Walk the Park Event on January 12, 2019 and submitted to Park Watch from Community members



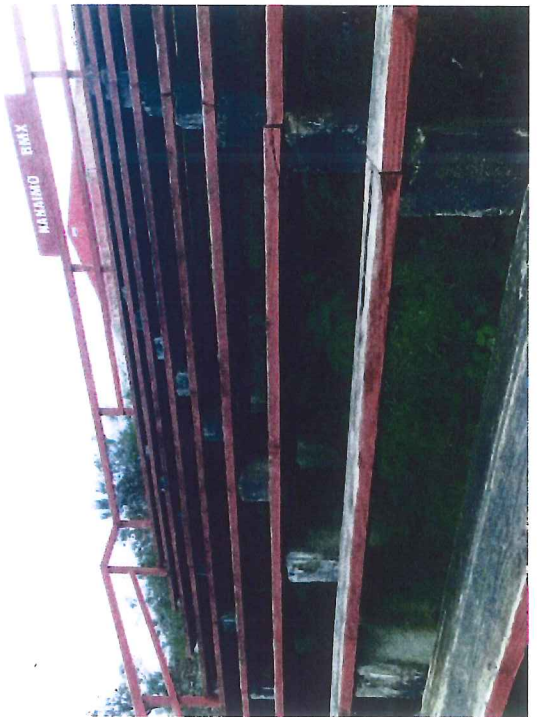




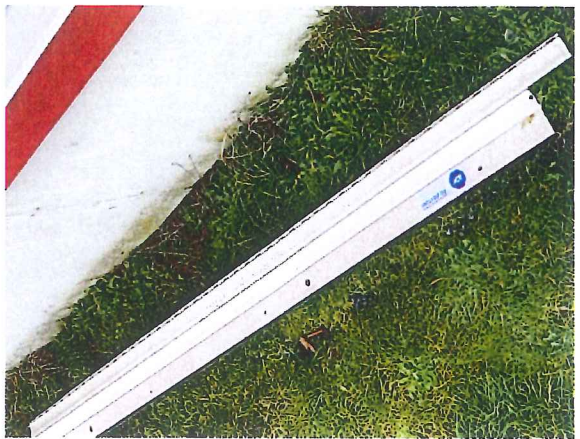
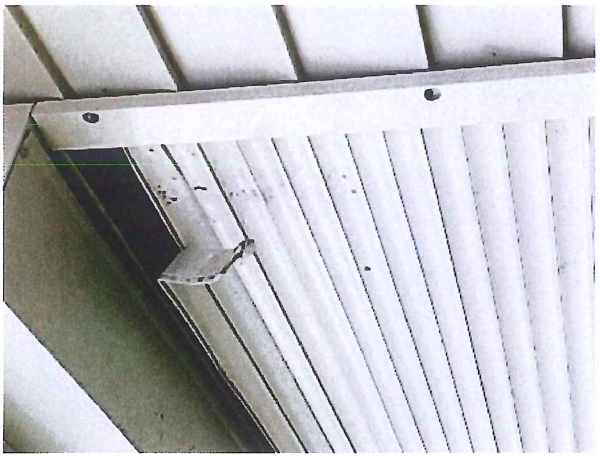
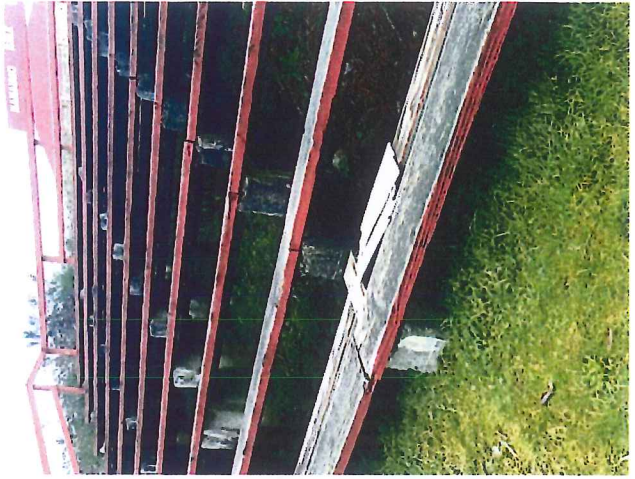
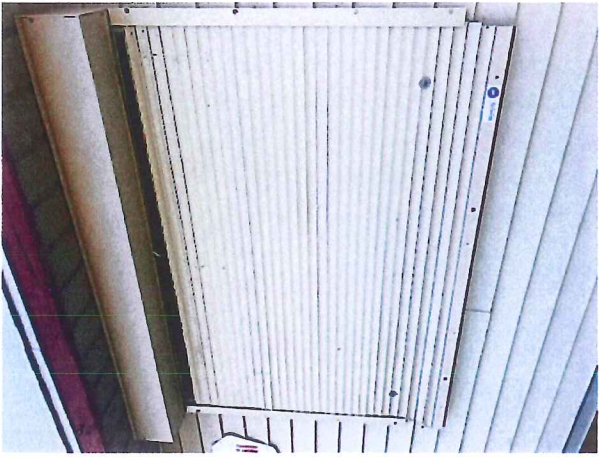


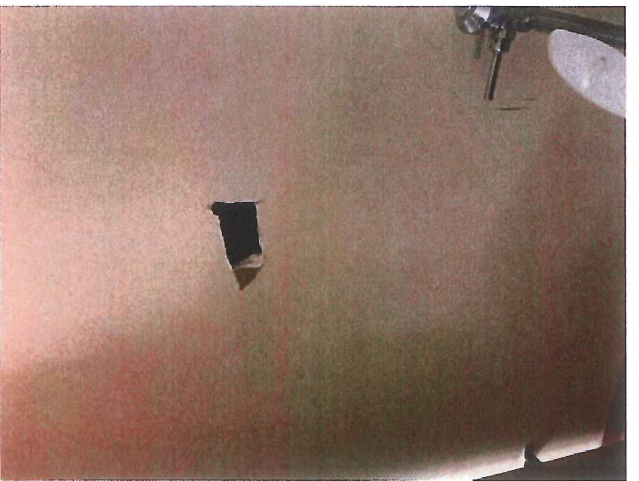


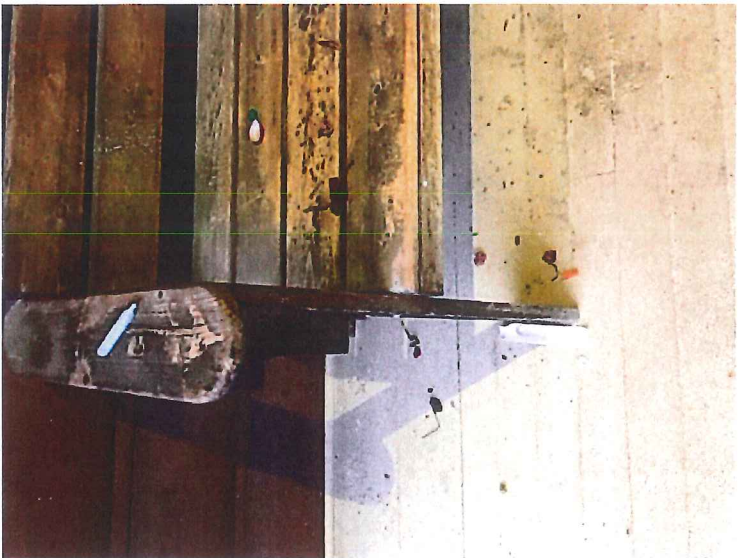














APPENDIX B

RESULTS OF SAFETY AUDIT FOR CRIME PREVENTION IN BEBAN PARK

REASONS FOR AUDITING THE AREA:

Responses Received:

- Crime & Vandalism
- Crime & Vandalism Because of housing put on Labieux
- Safety of Children and Park users
- Recent break-in attempts at BMX concession
- Recent Vandalism and undesirable visitors
- The new "homeless housing" across the street causing concerns
- Nanaimo BMX volunteers and association will likely be unable to cover costs to fix up the track after vandalism, ongoing garbage and repeat attempt to break into buildings.

Lighting [good lighting allows you to see the area and what's happening in it]

What is your impression of the lighting?

- ✓ very poor
- ✓ poor
- ✓ too dark

Is the lighting consistent throughout the space? NO

Are any lights out? YES –There are no Lights at Steve Smith Park. Lights at BMX Track over the race area but do not have them on at night. All light on buildings at BMX are all broken and turned off. There are no light in Parking lots.

Are you able to see and identify a face 25 metres (75 feet) away? NO

Do you know where/whom to call if lights are out, broken, not yet turned on, etc.? NO

Outdoors: Is the lighting obscured by trees or bushes? YES

How well does the lighting illuminate pedestrian walkways and sidewalks?

- ✓ very poor

What areas would you recommend adding lights?

Lighting are needed on the building on the top building at Stevie Smith
Lighting should be scattered throughout the park
Lights at the BMX park should be turned on
Parking lot needs lighting
Entrance to the track needs to be lit

Lights are needed on all the building at the Track

Signage [good signage lets you know where you are, what resources are available, and helps you develop some familiarity with the location]

Is there a sign (i.e. room no., building name) identifying where you are? YES

If no, are there directional signs or maps nearby which can help you identify where you are?
YES

Are there signs which show you where to get emergency assistance if needed? NO

Are there signs which direct you to wheelchair access? NO

Is there information posted describing the hours the building is legitimately open? NO

What is your impression of the overall signage?

- ✓ very poor
- ✓ poor
- ✓ satisfactory

Recommendations of signs you would like and the area?

Security/deterrence signage

Signs at the entrance, within the parking area, motto shed and concession saying "BMX park patrolled nightly with emergency numbers"

Signs to show entrance of the park, emergency signs, explaining there is nothing in out buildings, signs saying park is patrolled. Wheelchair access signs for our ramp access.

Sightlines [clear sightlines are important as they let you see, without interference, what lies ahead]

Can you clearly see what is up ahead? NO

Outdoors: bushes and trees create limited sightlines

Are there places someone could be hiding? YES

If yes, where? Under trees, bushes, branches are too low, bleachers, behind jumps

What would make it easier to see? Clearing bushes, trimming back trees, security mirrors.

What areas would you like to see opened up?

Tree lines along the fence all the way between Labieux Road and the park cleaned up and some removed to open it up to be able to see better from the road (for RCMP when driving by for

example). Large trees need branches taken up by 5-6feet. Trim back or remove bushes around all areas.

Isolation -- Eye Distance [this lets you assess how far away things are from the location and if someone would see you if you were in trouble]

At the time of your Audit, did the area feel isolated? 50% yes 50% no

How many people are likely to be around? 5-6 in Stevie Smith Park, 10-15 in our group at BMX park

- **In the early morning:** none
- **During the day:** several
- **In the evening:** several
- **Late at night (after 10 pm):** none

Is it easy to predict when people will be around? YES

Is there a monitor or surveillance system? NO

Isolation -- Ear Distance [lets you assess if you could be heard in an emergency]

How far away is the nearest person to hear a call for help: Depends if there are people there, no neighbors would hear a call for help

How far away is the nearest emergency service such as an alarm, security personnel, crisis telephone? Fire Station on Labieux and don't know

Can you see a telephone, or a sign directing you to emergency assistance? NO

Is the area patrolled? YES footprints but not often/by our volunteers who have started to. NO

If yes, how frequently? Don't Know

Recommendations:

Staggered security patrols through the night. Right now they come to Beban at the same time.

From what I know footprints does a patrol at 11pm but only once a day.

We need the area patrolled throughout the night and day.

Patrols need to be arranged and doing regular checks

Factors That Make the Place More Human [these questions let you assess whether or not the location is used or abused by people]

Does the place feel cared for? YES Cared for by the club and volunteers not the City. We can't keep up.

Does the place feel abandoned? NO

What gives you that feeling? Well used, cared for and loved by volunteers

Is there graffiti on the walls? NO (**pictures were provided with "tagging" around BMX track.)

In your opinion, are there racist or sexist slogans/signs/images on the walls? NO

Are there signs of vandalism? YES

Would other materials, tones, textures or colours improve your sense of safety? NO

Recommendations for enhancements

City help is needed. The volunteers cannot keep up with the amount of vandalism that is happening.

I recommend better lighting, more police/guards to patrol

Any specific area needing immediate attention?

The lighting enhancements

Clean-up crew are needed to come regularly and to clean up after the storm and all the over grown trees and bushes needs to be addressed.

Maintenance [these questions help you tell if the area is well looked after and well used by people]

What are your impressions of maintenance?

- ✓ poor
- ✓ good

Is there litter lying around? YES at BMX, NO at Stevie Smith

Is there need for major repair? YES at BMX NO at Stevie Smith

Do you know to whom maintenance concerns should be reported? YES

From your experience, how long do repairs generally take? Depends on cost and if there are donations and Volunteers able to do the work.

Comments:

Repairs are made by the club and are getting expensive for a non-profit to make

Repairs are made by our club, a non-profit organization where all the repairs are volunteer work. We need some help from the City for lighting to keep people from coming in the dark to vandalize the club.

The track, riding surfaces and facilities are well maintained by volunteers. The city could offer more maintenance of the park perimeter areas, fence lines, improved irrigation and tree pruning.

Recommendations for specific area:

Around the concession, our bleachers are weakening, some steps are starting to rot. The bottom boards on the motto shed need attention, our finish line needs to be replaced as it has fallen.

Remove shrubs and blackberries along labieux for better sightlines

Install lighting in Stevie Smith Park and parking lots

Security cameras managed by the City

Social Concerns [this lets you assess whether or not there are groups and organizations in place which add to your feelings of comfort and safety]

Are there cultural and social activities occurring in the neighbourhood? YES

Describe how this makes you feel more or less comfortable: The best youth and community asset in Nanaimo

Are there organizations and groups in the neighbourhood which are concerned about the neighbourhood and its people? YES

Describe how this makes you feel more or less comfortable:

This park has amazing organizational support from Nanaimo BMX and Stevie Smith group. This is critical to the parks safety and function. This bike park is one of the reasons we still live in Nanaimo.

Social Housing was put in. Putting our kids at risk, as a mother worried about taking child here because of needles etc.

Makes me feel scared for our children and our club. There has already been an attempt of a child's bike being stolen. We have found dirty used condoms, vandalism at our track and homeless people touring thru the property.

My concern is the addition to the homeless housing across the street from Beban Park. There have already been incidents of Vandalism, littering of dangerous items (needles, condoms, etc), as well as the attempted theft of a bike from a youth.

Do you have friends or neighbours in the area you could count on in an emergency? NO

Is the population of the area changing? YES A greater number of undesirable people are frequenting the area.

Describe how more or less safe this makes you feel:

Extremely unsafe for me, my children and the club.

Angry. BMX Park is a huge part of my son's life and up til now it was safe.

Very unsafe

Much less safe. Before the housing project this was a place I never worried about safety. I am angry. This park is one of the best assets for youth in Nanaimo. It needs to be safe 24/7.

Are there people with special needs in the area whose needs are not being met? NO

Are there institutions in the area which make you feel more or less comfortable? YES- the new housing

Describe how they make you feel more or less comfortable:

Less comfortable. Vandalism has already happened, theft and not feeling safe.

They have no care for anyone in our community. They are unsafe people.

From the Crime Prevention Safety Audit questions that you just completed, identify what can be done to make you feel safer about this location

Is there anything specific that you would want to see addressed right away?

Security, lights, patrols and trim trees.

Lighting the track. More police presence in the area. Clean up along the fence line so more can be seen from the street view.

Lighting and patrolled security checks.

The number one issue, for me, is the lighting. Lights can be a good deterrent at keeping the Riff-Raff at Bay. Lights also give the kids more time to utilize the park. I remember when the lights were put in at the skate bowl; My son, Stevie Smith, was so excited to have the opportunity to ride there in the evening.

I want 24 hour in person security payed for by BC housing. Better lighting. Security system managed by the City of Nanaimo. Vegetation removal along the perimeter by the City of Nanaimo.

What additional improvements would you like to see?

Signs and aid from the City

Lighting #1 and Cleanliness #2

Youth bike park ambassador program for the summer. A paid position for a teenager to report suspicious people and advocate for safety and park enjoyment.

Do you have any further specific recommendations?

Recommendations are lighting, clean up around the parker, more guarding/policing traffic through the park.

There was no consultation of Nanaimo BMX or Stevie Smith prior to this housing project.

BC Housing and the City of Nanaimo should understand the immense value of this bike park to our youth and work with Nanaimo BMX and Stevie Smith Bike Park to serve out community and our youth.

More monitoring of the residence of the housing should be done, complete with a curfew.

Another Deterrent of vandalism would be to set up some security cameras at both the BMX track and Stevie Smith Bike Park.

Security Checks would also be valuable, whether there is a group hired (Ex: Security Guard) or volunteers, a human presence is a great defence.

Info utilized from:

https://www.edmonton.ca/residential_neighbourhoods/PDF/SCACSafetyAuditGuide.pdf

APPENDIX C

Summary of Recommendations

Lighting

1. Lighting should be scattered throughout the park generally
2. Lighting are needed on the building on the top building at Stevie Smith
3. Lights at the BMX Park should be turned on at night (*All exterior outlets to be disabled while organizations are not present as recommended by BYLAW and RCMP*)
4. All Park Parking lots need better lighting
5. Entrance to the track needs to be lit
6. Lights are needed on all the buildings at the Track Nanaimo BMX building all have broken lights, thus non-functioning. Nanaimo BMX will require support for the increased costs of having lights on at night for safety as the non-profit currently covers the hydro costs. Perhaps exploring the use of a timer to help ensure they are only on at night when needed.
7. Have the lights on throughout the night will allow more opportunities for community use in and safe way and offer more public being vigilant.

Signage

8. Security/deterrence signage throughout Beban Park is needed
9. Signs at the entrances, within the parking areas, concessions and Stevie Smith bike park saying "Park patrolled nightly" with emergency numbers
10. Emergency signs, explaining there is nothing in out buildings, and where to go or call if help is needed.
11. Wheelchair access signs for Nanaimo BMX ramp access.
12. Signage with contact numbers to call if hazardous materials are found day or night

Sightlines

13. Clearing bushes, trimming back trees, security mirrors all would be beneficial throughout the park.
14. Tree lines along the fence all the way between Labieux Road and the park cleaned up and some removed to open it up to be able to see better from the road (for RCMP when driving by for example). Large trees need branches taken up by 5-6feet. Trim back or remove bushes around all areas. Examine all areas within Beban park and complete clean-up of all sightlines.
15. Clean-up crew are needed to come regularly and to clean up after the storm and all the over grown trees and bushes needs to be addressed along Labieux and other areas within the park.
16. Examine the full park and complete clean up and shrub removal throughout the Park, and in forested areas.

Isolation

17. Staggered security patrols through the night significantly increased throughout the entire park. *(Gated access points within the park should be opened to encourage RCMP and patrols to drive through the middle of the park more easily, as recommended by Parks, Bylaw and RCMP)*
18. We need all areas patrolled throughout the night and day. *(RCMP has arranged for Citizens on Patrol to also start helping the Park Watch Group as of Jan.21, 2019, however formal security is still recommended)*
19. Security cameras managed by the City.
20. Emergency phones in various parts of the park and signs to direct people where to go for Help.
21. City public Wifi to be turned off at night to discourage inappropriate people coming to the park to utilize it at night. *(recommended by BYLAW and RCMP)*
22. Arrange for security to be present at Nanaimo BMX, during scheduled practices and race times around the bathrooms and parking lots to ensure safety of attendees as it is closest to the housing.
23. Arrange for security to be present at other events within the park that may be impacted
24. A Motion to be made by Council to officially close areas in the park at 10:30pm-7am, specifically the two bike parks to allow for RCMP and Bylaw to issue trespassing tickets to anyone found in the park after closing. *(This is a recommendation made by BYLAW and RCMP and is fully supported by the executives of the Nanaimo BMX association and the Stevie Smith Foundation).*

Maintenance

25. Repairs are made by Nanaimo BMX, a non-profit organization where all the repairs are volunteer work. We need some help from the City to show that our park is cared for and better maintained due to the increase in human traffic.
26. The city could offer more ongoing maintenance of the park perimeter areas, fence lines, improved irrigation and tree pruning throughout the park if not already arranged.
27. City supporting more Garbage cans and daily pickup at both bike parks, thus parents not being responsible for the pickup of hazardous items that are left on the ground or in the cans those volunteers are emptying.
28. Ongoing porta potty, bathroom checks throughout the day to ensure they are clean and safe from hazards.
29. Regular walk thru for needle and hazard pick-ups (and sign posted about who to call if anything found)

Site specific to Nanaimo BMX:

30. Around the concession, helping to repair damages done already by repeated attempted break-ins.

31. The bleachers are weakening; some steps around the buildings and wheelchair access to concession are starting to rot. Would be good to replace with low-zero maintenance ones.
32. The bottom boards on the motto shed need attention
33. Our finish line needs to be replaced as it has fallen.

City Community Programming Partnerships

34. Meet with stakeholders/organizations **AND** their membership, on a whole, to review and update the information from Beban Park Master Plan. As soon as possible initiate the Beban Park Master plan in an expedited manner to allow Beban Park to be rejuvenated and enjoyed by the community for years to come, before the community disengages from attending Nanaimo's biggest asset.
35. Youth bike park ambassador program for the summer. A paid position for a teenager to report suspicious people and advocate for safety and park enjoyment.
36. Incorporate the summer playground program for younger siblings during the April-October season to add an element of safety and encourage families to be able to keep their younger children safe and engaged in healthy activities while older children and adults may be riding the tracks. Small Children once would play more freely with their friends and with less worry, now this will be unable to occur.
37. Further programs that are hosted by the City in partnership with Stevie Smith and Nanaimo BMX for learn to Ride camps.
38. Meeting with various organizations and the Parks department to examine cost increases and update lease agreements, as needed, to support these facilities with crime prevention strategies, if cannot already covered by the city.

Advocating for Immediate Enhanced Safety Measures at Housing

- Better security checks for tenants and guests (or following Terminal housing by not allowing Guests) *(RCMP indicated that, the housing on Labieux Road is allowing guests, and that the increased amounts of people in the park could likely be the guests that remain in the area as they are not permitted to stay overnight at the housing).*
- Staff of housing to walk through parks and discourage residents from inappropriately being in the Park. *(RCMP Liaison met with Housing manager who indicated they may not have the ability to be available due to staffing. Further conversations will be had between RCMP and BC Housing to request expanding their security contract to have the security extended into the park)*
- Building a partnership and volunteering opportunities for people in the housing who do want to give back to the park. *(RCMP has reached out to housing and there is opportunity to implement, arrangements will be made to further explore this with the Housing manager)*

Beban Park Watch

Darcie Osborne <Darcie.Osborne@nanaimo.ca>

Fri 2019-01-25 1:37 AM

To: Angie [REDACTED]

Cc: Richard Harding <Richard.Harding@nanaimo.ca>

📎 1 attachments (21 KB)

Summary of Recommendations.docx;

Hi Angie,

Thank you for meeting with us last week. We are always looking for ways to improve or enhance the Park and appreciate the time you have taken to communicate your ideas.

As discussed in our meeting we have been working with the Beban Park Leases, License holders and user groups to ensure there is communication on progress of the Beban Park Master Plan as well as sharing information on current issues and adapting or adding amenities and resources as needed and budgets permit.

Below is an update of some of what we discussed at our meeting. I have tried to respond based on the Beban Park Watch recommendation document but have also combined some issues under one heading where it made sense.

Many of the Park maintenance items suggested were already in the works as part of the annual Park workplan.

Lighting

- New lighting was installed at the Dog off Leash Park in 2018. It was done in a way that additional lighting can be added throughout that area of the park.
- Recognized in the planning of the dog off leash lighting, was the desire to add lighting for the pump track. The design and costing has been done for this but is not currently in the Capital plan. However, we will continue to liaise with Steve Smith Society on this.
- Lighting at the BMX track should be addressed if there are broken fixtures and lights currently not functioning. This is a license holder conversation with the Association.
- The BMX Association has reached out to the Director of Parks and Recreation on working on overall improvement plan for the BMX facility.
- Beban Park parking lots and the exterior lighting of facilities have been inspected and any burnt out or broken lights replaced. (this typically happens this time of year)
- As discussed in our meeting, lighting is not always the answer and in some cases will increase issues. Bylaw services suggests a 2 month trial period of lights on and lights off to determine best results for particular locations.
- As mentioned, we will also review sensor lighting (or smart lighting) as an option for effectiveness.

Signage

- Beban Park, under Bylaw 7073, does have hours of operation. Areas of Beban Park can be open for 24 hours a day when required for events, but sections can also be included in seasonal (winter and summer) opening and closing hours. As a trial and to assist RCMP and Bylaws Services, signage will be installed in specific areas of concern noting park hours in accordance to the Bylaw 7073 which states Park Hours are 6am-9pm Nov. 1- March 1 and 6am -11pm March 1 to Oct. 31. This signage will only be in areas that currently does not have regular evening or late night use like the facilities and the artificial turf fields. Installing this signage will allow enforcement officers the ability to ticket and remove people from the park if necessary.
- Nanaimo Bylaw officers have provided Beban Park Watch group with information pamphlets on who to contact for specific incidents. Beban Park Lease holders are permitted to post this information on their buildings, information boards and share with memberships.

Sightlines

- Parks crews are continuing to clearing bush and raising the tree canopy throughout the Park as part of their ongoing park maintenance plan. Beban Staff are meeting with Parks Crews this week to walk the park and discuss areas of concern throughout the park, this will include the fence line of Labieux road.
- Parks crews are continuing to clean up the park debris from recent storm and are doing so with a City Wide plan.
- Parks crews do needle and garbage sweeps of the Park on Monday, Wednesday and Fridays. Horticulture staff are also doing park sweeps Monday through Friday at varying times and encompassing the entire park. These clean-up crews regularly monitor garbage and debris. As in other parks, if issues increase then sweeps and cleanup will increase as required. Custodians also have daily custodial duties at the turf fields.
- The City discourages usage of mirrors as they are often broken and become hazardous.

Other areas of concern

- Security patrols come to the Park at the same time each night as their primary purpose is for washroom and gate lock ups. Additional patrols of Beban park are reviewed ongoing and seasonally. These patrols are increased as required – normally in the spring and summer additional patrols are added in consultation with RCMP and Bylaws.
- Several security patrols are frequenting the park on a regular basis such as Bylaw Services and RCMP. RCMP are working with BC Housing on security expectations.
- COP (Citizens on Patrol) will be patrolling the park. These are volunteers who do park patrols with no scheduled times and are random in nature.
- Bylaw Services have increased their tours of Beban park during daytime hours and not just Beban Park but other parks as issues merit.
- There currently is no City Wifi in lower park. This was determined to be best practice as Wifi would attract more issues.
- All outside electrical outlets have been disabled or secured at Beban Park and other parks throughout the City. Crews will check to ensure access is still unavailable.

- Security Cameras for Beban Park are in the City 2019 Capital plan. The City is currently waiting for the BC Office of Information and Privacy Commission approval to proceed.
- Keys for all gates within the Park are available to RCMP and Bylaw Services. The current gravel roadway between BMX and upper area of Park has poor drainage which is impacting our ability to open the yellow gate at the moment. Staff will continue to monitor this location and assess safety of opening it up in the coming months.
- As per the Beban Park Master Plan, one of the main goals is to open up pedestrian and vehicle access throughout the park. With the recent changes to the VIEX and NEA leases, some of this has already happened (i.e.: access to Steve Smith bike park) and will happen more as plan is implemented.
- Bylaw continues to work with Parks and Recreation to eliminate "hidy holes" in the Park. This is an ongoing effort.

Maintenance of BMX License Area

- Several of the items listed in the maintenance section are specific to the Nanaimo BMX license area and are items that should be addressed by the BMX board.

City Community Programming Partnerships

- Currently the City is offering in partnership with Nanaimo BMX two introduction to BMX racing courses and Two course at Stevie Smith bike park on trail smarts and mountain bike skills.

Advocating for immediate enhanced safety measures

- As per our meeting with your group, which also included RCMP and Bylaw participation, there are ongoing safety measures as listed in this email, additional measures have been added and additional ones possible as required. Any input from you group is always welcomed.

Thanks again for your time and concern. Please let me know if you have any questions from the information above. Look forward to meeting again soon.

Darcie Osborne

Manager, Recreation Services

Office: Beban Social Centre

2300 Bowen Rd

Nanaimo, BC, V9T 3K7

250-756-5221