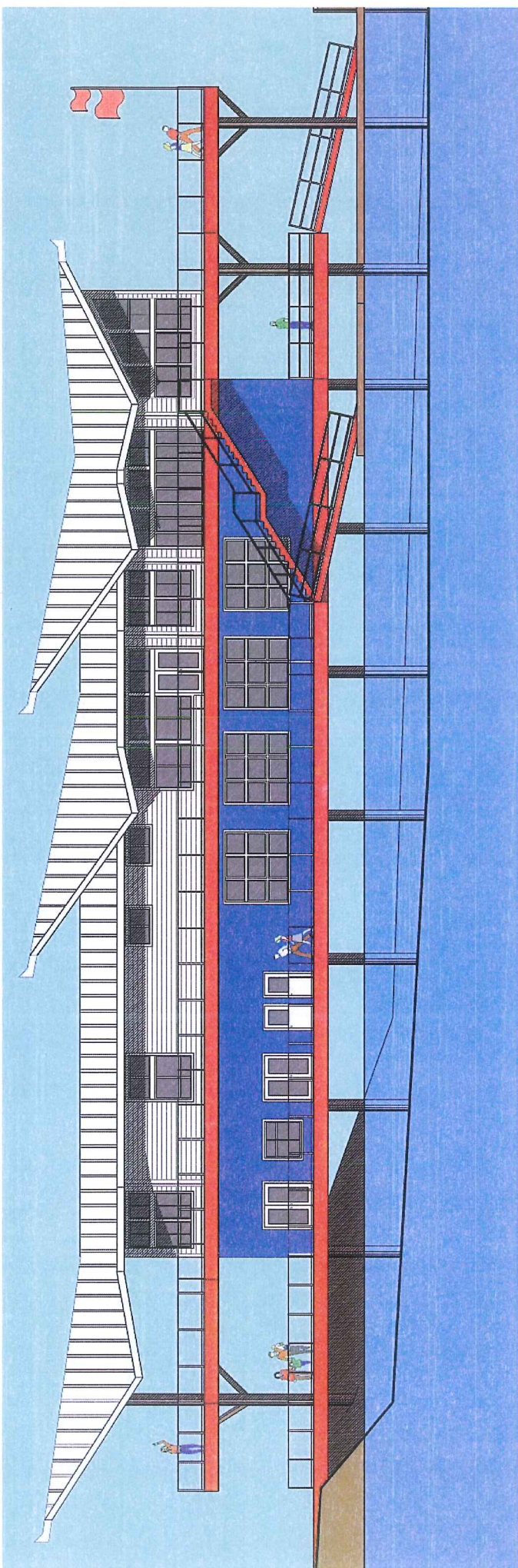


ian a. niamath
 M.A.I.B.C.
 5 - 1400 WINGROVE STREET
 NANAIMO, BC V9S 3L7
 iniamath@shaw.ca
 p (250) 729-7311
 f (250) 729-7311

NANAIMO BOAT HOUSE & PADDLING CENTRE

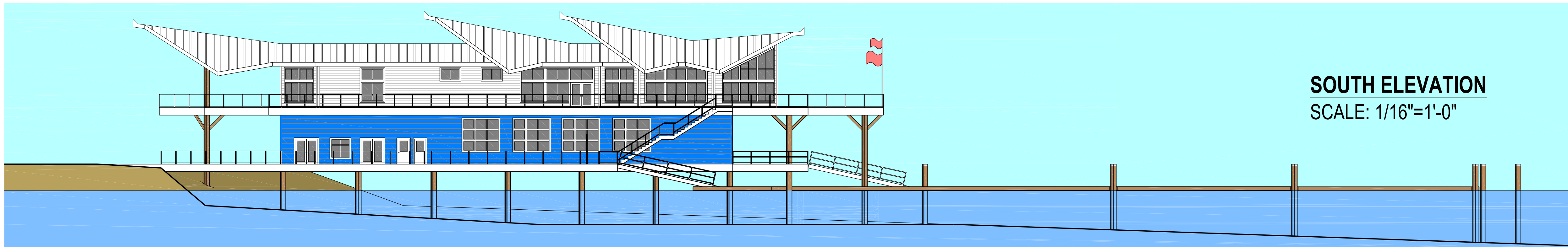
MAIN LEVEL FLOOR PLAN
 Gross Floor Area: 9,540 sq.ft.

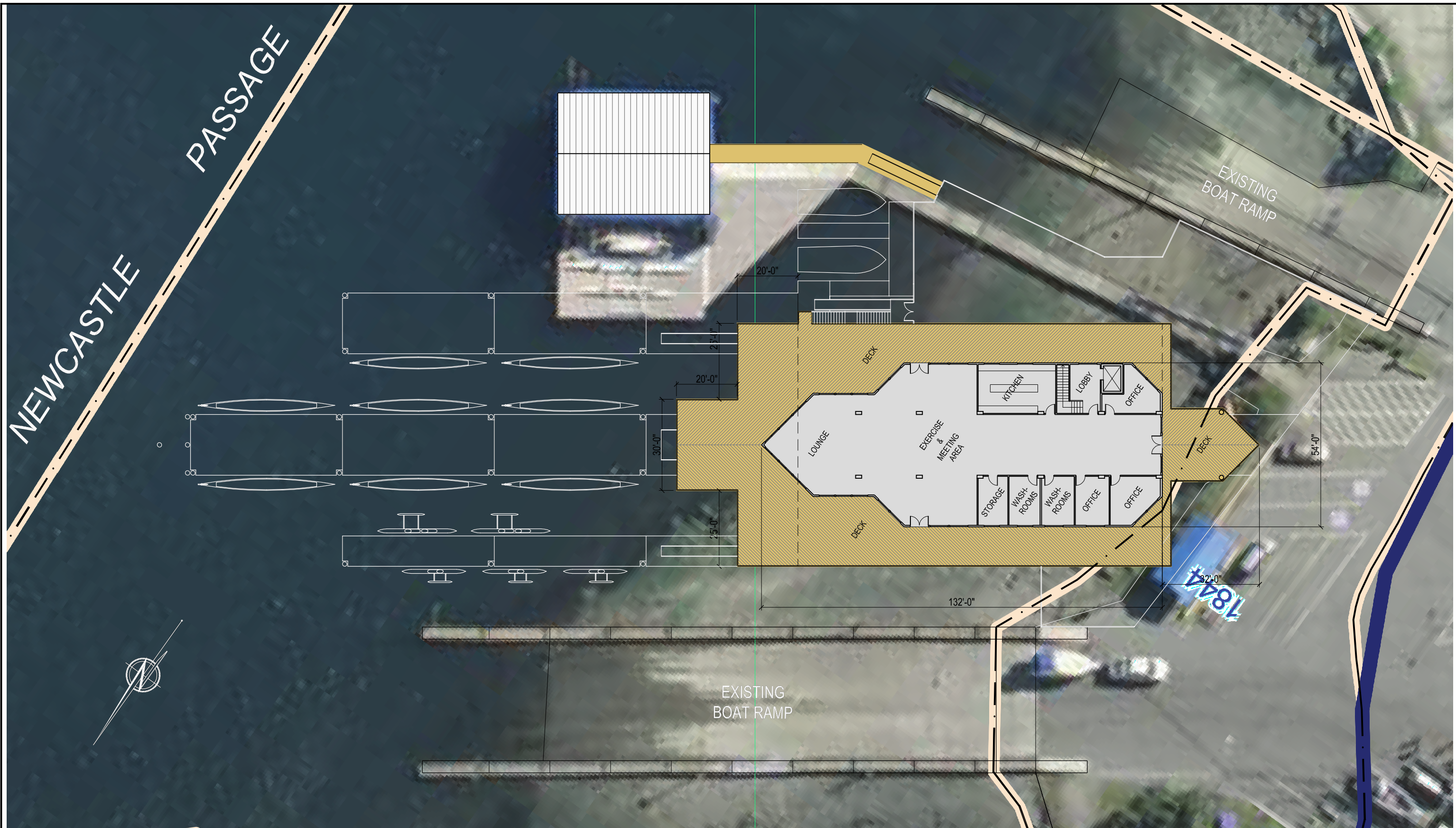
ASK 3a



NANAIMO BOAT HOUSE & PADDLING CENTRE

SOUTH ELEVATION





ian a. niamath
M.A.I.B.C.
5 - 1400 WINGROVE STREET
NANAIMO, BC V9S 3L7
iniamath@shaw.ca
p (250) 729-7311
f (250) 729-7311

NANAIMO BOAT HOUSE & PADDLING CENTRE

2ND LEVEL FLOOR PLAN
Gross Floor Area: 5,899 sq.ft.

ASK 3b



Nanaimo Boathouse & Paddling Centre

5735 Malibu Terrace, Nanaimo, BC V9T 5Y8 250 758 6860 tangclan6@gmail.com
nanaimoboathouse.org

A PRIORITY FOR NANAIMO

January, 20, 2016

At the Special Open Council Meeting on December 14, 2015, the Nanaimo Boathouse Society made a presentation to Council in support of our request for your **APPROVAL IN PRINCIPLE** for the Nanaimo Boathouse & Paddling Centre at Brechin.

Several questions were asked and answered of the presenters, followed by a debate by Council with further questions and comments. No decision was made or direction given but deferred until after an upcoming strategic planning session by Council.

To ensure the accurate information about the Boathouse is readily available to all Mayor & Council plus Staff, we hereby provide a brief of the main questions asked and comments made, with our answers, augmented by more relevant information where necessary.

Thank you for reading this material and should you need any further clarification, please call me at 250 758 6860 or email: tangclan6@gmail.com.

Camela Tang,
President,
Nanaimo Boathouse Society

Q 1. Parking - concerned that it is already crowded....how will we deal with that?

A 1. We agree that the parking lot is periodically utilized from May through September, when the fish are running and its summertime, but not all year round. Paddling is mainly in the summer too, but many programs run year-round. Most paddlers do not bring boats (kayaks, canoes, dragon boats) and trailers with them, unless there is a racing event. With the Boathouse, paddlers and boats will enter through the building or outside decks and launch off the docks at the front. So essentially, paddlers will not be using the 2 existing ramps which will primarily be available to motor boaters and commercial traffic. There are also other parking lots close by.

Trailer parking issues and delays on the launch ramps are mainly due to the motor boaters, not paddlers. We have checked with City Parking Services who monitor the parking capacity, and while it depends on the season, they advised that they have never had an issue with capacity.

We also looked at the parking design and in 2013 a plan was designed to accommodate more vehicles. We did not submit it to anyone or to the City as we did not think it was an appropriate time.

Q 2. Who owns the Site? (Brechin Boat Ramp)

Is the group married to this site; what about others that may already have services, they are asking for new services to be brought to this site?

A 2. The site, Brechin Boat Ramp, is owned by the City of Nanaimo.

Other locations along the Newcastle Channel, Maffeo Sutton Park, the Commercial Harbour and the South Downtown Waterfront (incl. the Wilcox Yard) have been carefully considered and are not suitable for a variety of reasons:

- the topography is not suitable whereas Brechin has a gradual slope
- the mud/silt and tides at the mouth of the Milestone make it unsuitable for more docks and boats at Maffeo Sutton; even more congested parking and no other parking lots close by
- large boats and other traffic, especially in the Commercial Harbour and South Downtown Waterfront are incompatible with paddling craft, creating a dangerous environment...it must be safety first
- these areas are extremely exposed to the wind and weather whereas Brechin and the Newcastle Channel are generally sheltered, year round
- this Society is not interested in building the Boathouse on commercially owned land and be subject to the vagaries of private owners. This Boathouse is to be a community amenity and the ownership best lies with the City who could hold it in perpetuity for the citizens of Nanaimo
- Sealand Market - we met with the owner and toured the site thoroughly. The building is not suitable, it will need to be re-zoned for Assembly and then brought up to present code standards (seismic), the costs would be prohibitive.

Q 3. - Operating costs and maintenance....wish we had some numbers.

- Do not want to 'commit' the City to unknown costs.
- Core Review is the priority right now

A 3. - Operating Cost Budget: We did not address the budget (2014) in detail, instead we left it open for discussion and negotiation during our review and development process after the AIP and before our request for the *Approval to Proceed*. This is a more prudent.

- Commitment - Granting the AIP does not mean 'commitment' to monies discussed at this time. In preparation for *Step 3 - Approval to Proceed*, we must provide an operating plan and budget, so Council will still have control over what you would commit to. See attached City Guidelines.

- Core Review - Expected completion by March 2016. We are looking at a 2-3 year horizon for *Approval to Proceed* and building by 2020.

Q 4. - VIU must invest; NPA must invest; we now have the hotel tax to fund events, who's investing?

A 4. - We've been working with VIU, NPA, NHA, SFN, NEDC & Tourism. They are aware and supportive of the project but we cannot discuss financial support until after we are granted the AIP.

Q. 5 - What about Westwood Lake? Seems most Centres in Canada are on lakes and rivers.

A. 5 - Westwood Lake is a *Green Zone* which precludes construction on the water. It is also not suitable for paddling. Most of Canada is land bound so they use lakes and rivers, but we are fortunate to be on an island in the ocean.

The vast majority of paddlers in Nanaimo and Region, as well as tourists, are ocean paddlers. We are the Harbour City yet we do not have a facility on the waterfront to showcase or maximize use of our harbour and ocean by people-powered craft. This can be a key element of our Tourism. The parking issue would worsen at Westwood with no relief from nearby parking lots, there are none.

Q 6. - This is a Tourism issue, where are they on this?

- Campaigned on Tourism but not to walk on/walk off the ferry
- Want to see Tourism spin off; bring back concrete numbers

A 6. - Tourism Nanaimo is very interested in this project. We have presented to them and to NEDC a couple of times and they understand the financial, health and lifestyle benefits, it will bring.

- Visitors coming from the mainland still count as 'Tourists' bringing new money into the community, even if they come as foot passengers off the ferry.
- Tourism spin-off as calculated in the Feasibility Study (April 2014).

(Excerpt from MNP Feasibility Study 2014)

The Nanaimo Boathouse & Paddling Centre is also expected to bring new paddling-related festivals and events to Nanaimo, as well as support and expand the current events. The creation of new festivals and events is expected to generate additional annual economic impacts for Nanaimo and the province through expenditures on goods and services and the attraction of out-of-region visitors. The economic impact of new festivals and events is indicated below.

Figure 1: Economic Impacts of New Festivals and Events through the Nanaimo Boathouse

	Output	GDP	Employment (FTE)	Tax Revenue
Direct	\$251,387	\$130,721	1.8	\$22,625
Indirect and Induced	\$173,457	\$ 80,444	1.2	\$17,597
Total	\$424,843	\$211,165	3.1	\$40,222

We estimate annual direct, indirect and induced output of \$425 thousand and a total nominal GDP contribution of over \$211 thousand. These impacts are derived from the following expected events:

- *Outrigger Canoe Race with 200 competitors and 400 crew and supporters.*
- *Adventure Bike/Run/Paddle Race with 200 competitors and 400 crew and supporters.*
- *Stand-up paddle board race series with 35 competitors and 45 crew and supporters.*

The economic impact of the Boathouse is significant when compared to the economic benefits of sport tourism in Nanaimo. According to the City of Nanaimo's 'Balanced Scoreboard: Economic Benefits Generated by Sport Tourism, the average economic output of sport tourism events in Nanaimo from 2009 to 2012 was just under \$2.5 million.¹ In this context, the Boathouse's economic impact from new events and festivals is contributing almost 17% in additional economic benefits.

¹ City of Nanaimo, "Economic Benefits Generated by Sport Tourism".



Nanaimo Boathouse & Paddling Centre

5735 Malibu Terrace, Nanaimo, BC V9T 5Y8

250 758 6860

tangclan6@gmail.com

The Nanaimo Boathouse & Paddling Centre at Brechin Point

A Boathouse & Paddling Centre will be of great benefit to the residents and paddling communities of Nanaimo and the Mid- Island, embracing all forms of paddling (kayak, canoe, First Nations canoe, outrigger canoe, dragon boat), with Paddlers of all ages and levels of ability including those with disabilities, youth and seniors.

Our objective is to work with the City of Nanaimo to have one built.

The April 2014 Feasibility Study for the Nanaimo Boathouse & Paddling Centre clearly concluded that the Centre is feasible and will bring economic and quality of life benefits to Nanaimo as a whole.

From 2012 to 2016 the Nanaimo Boathouse Society conducted numerous meetings with City Councillors & MLAs, MPs, SFN, VIU, Staff, paddling teams, corporations, businesses and members of the community.

The Society is planning to have the Boathouse project underway by 2020.

Projected Costs in 2014: Building \$3.9m

Fees & Contingency \$500k

Services to the Site

Economic impact: (Feasibility Study dated April 2014)

- Construction phase: \$8.04m
- Output Operations: \$564k annually
- Additional people & events coming to Nanaimo: \$424k annually

Some of the deficiencies in Nanaimo the Boathouse will help resolve:

- Marine Tournament & Festival Organization; Development of Eco/Marine/Adventure tourism
- Security for Society boats & equipment: prevention of vandalism, theft, and weather damage
- Washrooms and changing facilities at an accessible, convenient distance from launch sites, popular paddling locations, marine festivals & events
- Boat moorage and storage
- Centre for local and regional paddling training, certification & accreditation
- Research conducted in the Feasibility Study confirmed there is a need for a Boathouse & Paddling Centre in Nanaimo and that the proposed Brechin boat ramp location would be the best location for such services.
- A similar facility has been developed in Victoria over the past 4 years but there are currently no other facilities in the Mid-Island and North Island region offering comparable services. The Boathouse will therefore be able to provide those needed services to residents, visitors, current and future paddlers.

Facility Amenities:

- Low freeboard docks
- Indoor boat storage and maintenance workshop
- Washrooms; showers; lockers
- Handicap access; elevator
- Mechanical hoist for boats on docks to facilitate seniors and para - paddling
- First aid room; team room; administrative space; meeting space for community groups incl. RCM SAR

- Rental space for Event hosting with a Catering kitchen
- Outdoor rental storage for kayaks & canoes

The following Activities & Programs are proposed:

- Kayak/ Canoe/ Outrigger training/ Dragon boat training and activities
- Snuneymuxw First Nation Cross Cultural Training & Events (in collaboration with SFN)
- Youth paddling initiatives; Seniors Paddling Program; Para-paddling Opportunities
- Vancouver Island University (VIU) Outdoors and International Student programs, continuing their current programming
- Safety training e.g. Paddle Canada's PaddleSmart and AdventureSmart programs; RCM SAR .
- Coach Certification and Accreditation programs
- Paddling Festivals and Tournaments
- Facility will be an excellent waterfront venue for hosting community and private events.

Brechin Boat Ramp Use Issues.... we are very aware of the parking concerns and the issues of the ramp use. This will be a long term and continual process which we are willing to work on with the boating community and City Staff. The kayaks, dragon boats and outrigger canoes will not use the existing boat ramps, they will be moored and launched from the Boathouse docks, which are clear of the ramps.

Benefits - City of Nanaimo Strategic Plans 2012 - 2015 and 2016 - 2019; the Successful City Initiative (GNCC)

****Strategic Priorities, Community and Social Impacts:***

- *Health & Wellness - Quality of Life
- *Waterfront Enhancement; safe access to the water; waters sheltered from weather
- *Tourism and product development
- *Community Building Partnerships to include Snuneymuxw First Nation, VIU, Tourism, NPA and others.

While waiting for the *Approval in Principle* from Nanaimo City Council, we continued to build community awareness and support for the Boathouse & Paddling Centre. We also began our community programs creating a Seniors paddling program and held our first Paddlefun Fest, May 2015 and then again in May 2016. The Seniors paddling program has grown and is still running year-round.

May 2014 - Dec. 2015 we applied for the Approval in Principle (AIP) from the City of Nanaimo. That would have allowed us to move on to final design, drawings, approvals, permits and the fundraising campaign for the building and start-up costs. At that time we were told that the Project had to be a City Priority. The 2016 - 2019 Strategic Priorities Plan was renewed in Spring 2016. The Boathouse was not listed as a priority.

It is now with renewed optimism that we bring this Project Initiative before you, for your serious consideration and ask that you select it as a Priority for Nanaimo. However, we can no longer undertake to raise the funds for the Building, but are most willing to work with the City through the Parks and Recreation Department to bring the Boathouse & Paddling Centre building to fruition.

The Nanaimo Boathouse Society will also work with the various paddling organizations and sponsors, to acquire boats and equipment, and arrange for the programming at the Centre.

Sincerely,

Camela Tang,

President,

Nanaimo Boathouse & Paddling Centre



GUIDELINES FOR COMMUNITY CAPITAL PROJECTS

The City of Nanaimo through its Parks and Recreation Commission encourages community projects that enhance the quality of life and leisure in Nanaimo. The Commission may support projects by recommending that City Council provide financial assistance, enable the use of City land or assign staff to help with project development.

STEP 1 – DETERMINING PROJECT FEASIBILITY

A community organization or group considering a community capital project that may either require the City's financial assistance or be constructed on City land, is to present its idea to the Parks and Recreation Commission. If the Commission determines that the project is in the community's interest and helps achieve the goals of the City, staff will be asked to work with the community group in the development of a project plan that includes an information report to Council outlining the public process.

STEP 2 – APPROVAL IN PRINCIPLE

The community organization will return and present the project plan to Commission or the appropriate standing Sub-Committee of the Parks and Recreation Commission. The presentation will include:

1. A description of the project and its benefit to the community; including reference to community master plans, if applicable.
2. A conceptual drawing and a site plan.
3. An estimated project budget including all funding sources (cash, grants, loans, donations and volunteer hours) and the financial assistance that is being requested from the City.
4. An estimated operating budget and how the project will be operated and/or maintained.
5. A detailed fundraising plan.
6. An estimated project timeline.
7. The public input process required.

Based on this presentation, a recommendation will be forwarded to the Parks and Recreation Commission. If the project feasibility phase is recommended by the Commission, then a report will be provided to Council outlining the scope of the project, and the steps of the process. Commission endorsement of the project will be subject to approval by Council. If support is given for the project, the organization may initiate a fundraising campaign and develop more detailed plans.

STEP 3 – APPROVAL TO PROCEED

Before the project proceeds, the community organization must present to department staff:

1. Construction drawings and specifications.
2. A detailed site plan.
3. A project budget including written quotes for all work.
4. A construction plan and schedule.
5. An operating plan and budget.
6. A verification of financing from all sources.
7. Alternative Approval Process

All capital projects built on City property will become the property of the City.



NANAIMO BOATHOUSE SOCIETY
5735 Malibu Terrace • Nanaimo, BC V9T 5Y8 • 250.758.6860
nanaimoboathouse@gmail.com

June 2014 and November 25, 2015

To: City of Nanaimo

* Letters Included - Dec. 31. 2018

Re: LETTERS OF INTEREST & LETTERS OF SUPPORT

* April 9, 2014	Chief John Wesley	Snuneymuxw First Nation
* March 26, 2014	Dr. Ralph Nilson President and Vice-Chancellor	Vancouver Island University
* May 8, 2014	Bernie Dumas President & CEO	Nanaimo Port Authority
* May 3, 2014	Michael Harrison Chairperson	Brechin Hill Community Association
* March 18, 2014	Gordie Robinson	RCM Search & Rescue, Station 27
* March 19, 2014	Heiko Behn Chair	Nanaimo Dragon Boat Festival Society
* April 30, 2014	Dan Brady General Manager	Howard Johnson Harbourside Hotel
April 30, 2014	Richard Antonchuk	Alberni Outpost
* April 30, 2014	Leif Bogwald Owner & Travel Curator	Vancouver Island Expeditions
March 7, 2014	Joyce Mark Commodore	Nanaimo Canoe & Kayak Club
March 12, 2014	Marilyn Riendl Vice-Captain	Mentor Mariners Dragonboat Team
May 5, 2014	Catharine Edwards Captain	Nusa'Lon Dragons

Letters of Interest & Letters of Support continued.....

April 7, 2014	George Hanson Consultant	Clayton Consulting
March 19, 2014	Yvonne Visser Owner & Olympic Athlete	Vancouver Island Integrated Sport Performance Centre
February 17, 2014	Murray Welte	Member & Paddler
May 22, 2014	Janet Povey	Chix with Stix Dragon Boat Team
June 3, 2014	Brian Potentier Nanaimo Base Manager	Seair Seaplanes
* June 6, 2014	Marc Stones	Stones Marine Centre Inc.
June 6, 2014	Daryoush Firouzli	Daryoush Firouzli Architecture Inc.
June 6, 2014	Mike Seargeant	Departure Bay Holdings Ltd. Departure Bay Marina Ltd.
June 2014	Steve Graham	Millers Pub, Sealand Market
* June 6, 2014	Stephanie Meinke President	BC Marine Trails Network Association
* June 6, 2014	Sasha Angus CEO	NEDC / Tourism Nanaimo
* June 8, 2014	Peter Boon President	Nanaimo Paddlers
June 7, 2014	Ian MacPherson CEO	Nanaimo Yacht Charters & Sailing School
* November 25, 2015	Dr. Derek Poteryko Medical Director	Nanaimo/Oceanside Island Health



Snuneymuxw First Nation

668 Centre Street
Nanaimo, BC, V9R 4Z4

Telephone: 250/740-2300
Fax: 250/753-3492

April 9, 2014

Nanaimo Boathouse Society
5735 Malibu Terrace
Nanaimo, BC
V9T 5Y8

Re: Letter of Interest - The Nanaimo Boathouse & Paddling Centre

On behalf of the Snuneymuxw First Nation, I am pleased to submit this Letter of Interest to the Nanaimo Boathouse Society.

The two Councillors from Snuneymuxw who sit on your Board of Directors, Mike Wyse and Paul Wyse-Seward, have informed us of the progress that has been made in the planning of and programming for the Nanaimo Boathouse & Paddling Centre project. We understand this includes a feasibility study indicating that the project has attracted broad support from residents of Nanaimo.

We are also supportive of the facilities and other amenities that will be offered through the Centre including docks, safe storage for boats and equipment, hoists, washrooms, meeting and other gathering spaces, and access for persons with disabilities. Snuneymuxw is also very interested in the activities and programs that will be offered through the Centre. Of special interest to Snuneymuxw are the opportunities for cross-cultural training and other events, and access by Snuneymuxw members to recreational and athletic programs for all ages.

In providing this letter of interest, we draw your attention to broader historical and legal context in which this project will be carried out. In 1854 at Nanaimo, the British Crown and Snuneymuxw entered into a treaty. By virtue of the Treaty of 1854, the Aboriginal title and other rights of Snuneymuxw are recognized and affirmed. This includes the right of Snuneymuxw to carry on its fisheries as formerly. Sadly, since the Treaty of 1854 was concluded, the rights of Snuneymuxw enshrined in the Treaty were often ignored and systematically violated. The extensive development at Brechin Point following the arrival of Europeans without Snuneymuxw consent is a case in point.

We raise the matter of Snuneymuxw rights in this letter to reinforce that in supporting this project, Snuneymuxw is actually contributing to it in a tangible way. Ideally, this contribution should be recognized in some form.

We are very pleased to be involved with and contribute to this project.

Sincerely,

Chief John Wesley



VANCOUVER ISLAND
UNIVERSITY

Office of the President

March 26, 2014

Nanaimo Boathouse Society
5735 Malibu Terrace
Nanaimo, BC V9T 5Y8

RE: LETTER OF INTEREST

On behalf of Vancouver Island University, I am pleased to offer this letter of support to the Nanaimo Boathouse Society.

VIU Athletics Director Bruce Hunter has informed me of the progress you have made toward your goal of building a 'paddling centre' on the Nanaimo waterfront. VIU is very supportive of such innovative and forward thinking community projects and congratulate your group on the impressive work you have done to date.

If you are successful in getting the centre built, VIU would very likely be interested in taking advantage of the opportunities such a facility will provide and we look forward to continuing to work with the Boathouse Society as the project develops.

Please keep us informed as you move forward with this project and good luck with the next phase. If we can be of any assistance, please feel free to contact Bruce Hunter at (250)740-6402 or bruce.hunter@viu.ca, or Dan Hurley, Executive Director, University Relations at (250)740-6150 or dan.hurley@viu.ca.

Sincerely yours,

Ralph Nilson, Ph.D
President and Vice-Chancellor

Cc: David Witty, Ph.D, Provost and Vice-President Academic
Dan Hurley, Executive Director, University Relations
Bruce Hunter, Athletics Director

May 8, 2014

Ms. Camela Tang
Nanaimo Boathouse & Paddling Centre
5735 Malibu Terrace
Nanaimo, BC V9T 5Y8

Re: Letter of Support for the Nanaimo Boathouse & Paddling Centre

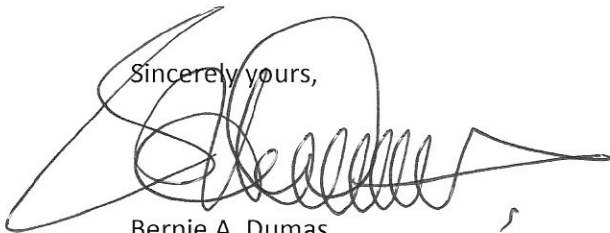
To whom it my concern,

The Nanaimo Port Authority Board of Directors met with the Paddling Centre Committee on May 23, 2013 to receive a detailed overview of the project. The Board felt that this project will benefit our community, and approved a motion on September 30, 2013 to provide funding for a business plan study to be completed.

The Paddling Centre Committee met with the Board of Directors again on April 23, 2014 to present the results of the business plan study and to secure additional support for the project. The Nanaimo Port Authority supports the project in principal, and continues to hold the position that this project will benefit our community by providing a centralized location to operate small recreational boats and activities.

The Board of Directors asked the Paddling Centre Committee to continue to provide updates on their progress and also requested an opportunity to review the final design and operational procedures.

Sincerely yours,



Bernie A. Dumas

May 3, 2014

To Mayor and Council
City of Nanaimo,

Re: The Nanaimo Boathouse & Paddling Centre

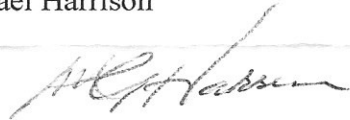
The Brechin Hill Community Association (BHCA) met with representatives of the Nanaimo Boathouse Society on May 2, 2014 to discuss the concept of a boathouse and paddling centre to be located at the Brechin Boat Ramp.

BHCA greatly welcomes the opportunity to help create a centre for all aspects of paddling activities in our city. As plans for the project progress, we want to ensure that all users (present and future) of the Brechin Boat Ramp are given the opportunity to provide input of their concerns and needs.

The Nanaimo Boathouse & Paddling Centre will enhance our neighbourhood, and indeed the whole City of Nanaimo.

On behalf of the BHCA executive,

Michael Harrison



Chairperson, BHCA



**ROYAL CANADIAN MARINE
SEARCH & RESCUE**

Saving Lives on the Water

Station 27 • Nanaimo

Nanaimo Marine and Rescue Society

P.O. Box 146 Nanaimo Stn. A

Nanaimo, B.C.

V9R 5K9

The Nanaimo Boathouse Society
5735 Malibu Terrace
Nanaimo, B.C. V9T 5Y8

4 April 2016

Dear Camela,

Royal Canadian Marine Search and Rescue (RCM-SAR) Station 27 and Nanaimo Marine Rescue Society (NMRS) are pleased to be involved in your project and appreciate the fact that you have included many partners in your planning. Your team has done a wonderful scenario and willingness to provide the Nanaimo area community such a great vision of your project on the water.

We support your project in principle and as a neighbour on the waterfront, we wish to be consulted in the design phase. Our membership is around 45 and we have monthly meetings as well as special events and training sessions that our facility cannot provide. We also look forward to the use of your kitchen facilities and washrooms.

As a focal point for paddlers, it would be a great chance to work on mutual safety training and share our love of the water. Our members have also expressed an interest in using the facilities for their personal paddling activities so it shows to us that a High-Performance Centre will raise the overall membership and wellness of our crews and other community members.

We wish you well in your endeavours and encourage our continued good relationship.

Deborah Thomson
President
NMRS

Michel Morin
Station Leader
RCM-SAR 27



PO Box 575 Stn A
Nanaimo BC V9R 5L5

The Nanaimo Boathouse Society,
5735 Malibu Terrace,
Nanaimo, BC V9T 5Y8
19 March 2014

Dear Camela

LETTER OF SUPPORT
NANAIMO BOATHOUSE AND PADDLING CENTRE (NBPC)

As part of the feasibility study for the proposed Nanaimo Boathouse and Paddling Centre (NBPC), on behalf of the Nanaimo Dragon Boat Festival, I am pleased to provide our full support for this marvellous project.

Our society hosts the single largest annual festival in Nanaimo in July with up to 2000 paddlers and their families plus thousands of spectators arriving onto the Nanaimo waterfront. Currently there are approximately ten teams locally that operate out of various marinas throughout Newcastle Channel but there is no single location where any could congregate to share experiences, skills and more.

Our Dragon Boat Society supports cancer and cancer research while simultaneously promoting beneficial health for those who suffer or have suffered from breast cancer.

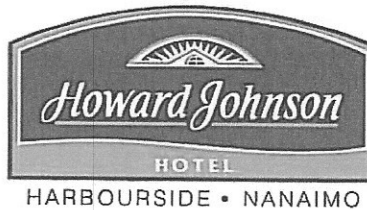
One of the strategic goals of our society is to develop and enhance the sport of dragon boating locally by being a centre of excellence for the sport and to provide a focal point for the various teams. Currently due to space limitations and a place to "hang our hat" we have had limited success and feel the addition of the NBPC will create a new synergy for local participants.

In our quest for improvement the following (in priority) would greatly assist in the achievement of our goals:

- Freeboard docks
- Team room, administrative areas
- Sustainability and growth of the sport
- training area
- promotion of health and wellness
- storage areas
- washrooms/showers

The Nanaimo Dragon Boat Festival Society is fully supportive of the new centre and strongly believes that once it is built and operational, the benefits to the Nanaimo community in sport, health and financial spin-offs for the tourism industry and other associated businesses will far outweigh the initial costs within several years.

Heiko Behn
Chair
Nanaimo Dragon Boat Festival Society



April 30, 2014

Nanaimo Boathouse Society,
5735 Malibu Terrace,
Nanaimo BC
V9T 5Y8

Re: Letter of Support - The Nanaimo Boathouse & Paddling Centre

On behalf of the Howard Johnson Harbourside Hotel I am pleased to provide this Letter of Support for the Nanaimo Boathouse & Paddling Centre.

We were made aware of this project very early in the process and are glad to hear that you have received a favourable Feasibility Study and are prepared to progress with the Centre.

Of particular interest to us is your intention to work with operators at the development of Eco, Marine and Adventure tourism, through the Centre. Your allotment of a space for an 'Adventure Tourism Welcome Centre' on the main level, is positive. We understand this space will be used for the first point of contact and sign-in for programs and activities hosted by groups such as tour operators, dive groups and other water-related activities.

We are also pleased with your plan for two additional wharfs to be used as a dive boat terminal, for the RCM Search & Rescue and coaching boats. Having access to amenities of the Centre would be an added benefit to our diving industry.

The Marine Tournament and Festival planning you will be doing, including cross-cultural activities with the Snuneymuxw First Nation, is encouraging, as that would grow our hotel occupancy.

We are in full support of this project and look forward to your progress,

Sincerely,

A handwritten signature in dark ink, appearing to read "Dan Brady". The signature is stylized with a large, sweeping initial "D" and a long, horizontal stroke extending to the right.

Dan Brady
General Manager
Howard Johnson Harbourside Hotel

Vancouver Island EXPEDITIONS

Discover places that inspire stories.

30 April 2014

The Nanaimo Boathouse Society
5735 Malibu Terrace
Nanaimo, BC V9T 5Y8

To Whom It May Concern:

We are a newly established tour business based out of Nanaimo and we are writing to express our full support with regards to the Nanaimo Boathouse & Paddling Centre. We would also like to express our interest in using this facility and see it a key part of our growth moving forward.

Businesses such as mine and the visitors we bring to Nanaimo would benefit greatly from a centralized meeting place for paddling activities in Nanaimo. The current paddling facilities are a bare minimum of what can be offered and do not do a great job of showcasing all that Nanaimo's harbor has to offer.

Amenities we would use if such a space were designed would include:

- Event rental space for orientation of groups upon arrival
- Catering kitchen area for meals provided after paddling tours
- Washrooms, showers, and lockers for visitors to change and freshen up before and after paddles
- First aid room if someone is injured while on a tour

We see eco and adventure tourism as areas of growth for tourism here on Vancouver Island and a paddling centre such as one proposed by the Nanaimo Boathouse Society as being integral in attracting visitors to our area.

We fully support this project and will be one of the first organizations in line to sign up to use the facilities once it is completed.

Yours truly,



Leif Bogwald
Owner & Travel Curator
Vancouver Island Expeditions
599 Sarum Rise Way
Nanaimo, BC V9R 7E5

Stones Marine Centre Inc.

1690 Stewart Avenue, Nanaimo, British Columbia, Canada, V9S 4E1

Telephone: 250-753-4232 Fax: 250-753-4204 Email: email@stonesmarina.com

June 6, 2014

Nanaimo Boathouse Society
5735 Malibu Terrace
Nanaimo, B.C. V9T 5Y8
ATTN: Ms. Camela Tang

Re: Nanaimo Boathouse and Paddling Centre

Thank you for introducing us to the Nanaimo Boathouse and Paddling Centre project planned to be located at the Brechin Boat Ramp. We see this as a wonderful addition to our waterfront.

We operate a marina on Newcastle Channel and receive many enquiries related to dragonboating, kayaking, canoeing and other waterborne activities. In addition, we are witnessing a dramatic interest in our waterfront in general as people seek public spaces to enjoy. The Paddling Centre proposal would make a great placemaking addition for paddlers and for our community in general.

Nanaimo's Official Community Plan encourages the continuing development of the Newcastle Channel waterfront into a mixed use recreation, tourism and entertainment destination area; a comprehensive people place. The Nanaimo Boathouse and Paddling Centre is an inspiration to that end.

We look forward to receiving news of your continuing progress.

Yours truly,
Stones Marine Centre Inc.



Marc Stones, CPA, CA



BC MARINE TRAILS NETWORK ASSOCIATION

302 Willow St.
Parksville, BC. V9P1C7

Email: president@bcmarinetrails.org
www.bcmarinetrails.org

June 6, 2014

Camela Tang
tangclan@shaw.ca
Nanaimo Boathouse Society

Re: Letter of Interest – BC Marine Trails Network Association

Dear Camela,

The BC Marine Trails Network Association is interested in exploring the possibilities of working with the Nanaimo Boathouse Society as we believe there are areas where the two associations can mutually assist one another for the benefit of international as well as local touring paddlers, and also, Nanaimo as a whole.

The Nanaimo Boathouse could offer BC Marine Trails users a collection of facilities not found anywhere else, including easy to use docks for launching, washroom and shower facilities, and possible secure storage for kayaks.

Nanaimo is at the northern end of the Gulf Islands Paddling Area. This area is appealing and extremely accessible to all levels and types of paddlers and therefore quite popular and busy. Potential storage facilities with easy access to the city would offer something very significant to the Gulf Islands touring paddler that is not offered in any other community to date. This could attract paddlers who wish or need to utilize accommodations and services, to Nanaimo.

Through its state of the art website, the BCMTNA could offer Nanaimo Boathouse exposure to touring paddlers through its website map, in its directory, and within its Gulf Islands blog pages.

As the Boathouse would be located in Nanaimo, the 'hub' and 'harbour city' of the southern coast of BC, it could also become a focal point for BC Marine Trails' future promotional events and meetings.

In summation, at first look, the BCMTNA believes that the Nanaimo Boathouse concept could have excellent possibilities for the use of touring paddlers, and as such, we are interested in having more discussions and involvement with your society as your concept and plans develop further.

Sincerely,

Stephanie Meinke, President
BC Marine Trails Network Association
www.bcmarinetrails.org

June 6, 2014

Re: Letter of Support for The Nanaimo Boathouse & Paddling Centre

On behalf of the Nanaimo Economic Development Corporation and Tourism Nanaimo, I am pleased to provide a letter in support of the activities and proposed plans of the Nanaimo Boathouse Society for the paddling centre.

Our organizations have been strong supporters of the paddling centre proposal since its inception. Tourism Nanaimo's Tourism Development Fund has provided funding that has helped the Boathouse Society undertake its feasibility study. We are pleased to hear of the continued progress that the Society is making towards its goal of building a Paddling Centre that will provide needed dock space, safe storage for boats and equipment, a central location for both locals and tourists to gather, and a hosting facility for a variety of water-based activities.

The development of Nanaimo Paddling Centre is well aligned with the tourism strategic plan. It provides a centralized gathering point for tourists who want to enjoy water-based adventures, as well as a location from which to run paddling-related festivals and events such as the Dragonboat Festival, which contributes to overnight stays and increased awareness for our destination. With the new accommodation tax that will shortly start being collected, this facility will provide needed infrastructure that can potentially attract new festivals, a priority outlined in the accommodation tax agreement. Additionally, this facility will help support Tourism Nanaimo's sport tourism development goals.

As a "harbour city", the proposed paddling centre fits well with our destination image and supports our positioning as a destination with infinite possibilities. We fully support this project and look forward to its construction in the near future so we can begin to leverage the new infrastructure for our marketing and business development efforts.

Sincerely,



Sasha Angus
CEO
Nanaimo Economic Development Corporation



June 8, 2014

Nanaimo Boathouse Society
5735 Malibu Terrace
Nanaimo, BC V9T 5Y8

Re: Letter of Support for and Interest in the Nanaimo Boathouse & Paddling Centre

Dear Camela,

As President of Nanaimo Paddlers, I enthusiastically confirm our support for and interest in the Nanaimo Boathouse & Paddling Centre.

Nanaimo Paddlers are a friendly group of paddlers who canoe and kayak for fun. Our 200 plus member Club includes paddlers from all age groups and skill levels. We specifically promote safe paddling and encourage skill development and respect for the environment. Our experienced paddlers mentor new paddlers to help them develop an increased self-awareness of their paddling skills and abilities.

The harbor front is an area we use extensively for our courses, workshops and paddling activities/events. You will frequently see our members launching from Brechin Point. We coordinate the annual Newcastle Island shoreline cleanup and also host an annual campout at the group picnic area.

Our Club definitely considers the boathouse an asset. It will be a safer location for paddlers to launch from and give us a better environment to debrief paddlers and prepare gear/boats before hitting the water. Upon return from a paddle the added amenities and social atmosphere will be most welcome!

We will also consider using the meeting space for our regular monthly members meetings and various courses/workshops held throughout the year. An on the water venue has long been on our wish list.

Nanaimo Paddlers hopes that this much-needed project will come to fruition and looks forward to the opportunity to utilize the boathouse to help further our Club's purposes. A safer harbor front hub for paddlers is a must have for our community – the benefits will also reach far beyond safety.

Please let us know if there is anything else we can do to assist with this project. At a minimum we'd like to invite you to attend our next members meeting on the first Wednesday in September in Room 2-3 at Beban Park. Please confirm with me if you can make it and we will be sure to put you on the agenda (250-585-1110 or paddlerpete@shaw.ca). Our members will be delighted to hear more!

Sincerely,

A handwritten signature in black ink, appearing to read "Peter Boon", with a horizontal line underneath.

Peter Boon
President

ANCHOR FAMILY MEDICINE



Stephen B. Beerman, B.S.R., M.D., C.C.F.P., F.C.F.P.*
Peter Metrowich, M.B.B.Ch., M.R.C.G.P., DCH, D.R.O.C.G.
Kathryn King, M.D., Ph.D., C.C.F.P.
Peter King, M.D., Dip. Sport Medicine*
Kirsty McIlwaine, M.D.
Tony Zuccaro, M.D., C.C.F.P.*
Sandy da Silva, M.D., C.C.F.P., F.C.F.P.*
Derek Poteryko, M.D., C.C.F.P., F.C.F.P.*

1450 WADDINGTON ROAD
NANAIMO, B.C., V9S 4V9
Phone: (250) 754-5545
Fax: (250) 754-5954

November 25, 2015

Dear Mayor McKay and Nanaimo City Council,

It is my pleasure to write a letter in support of the Nanaimo Boathouse and Paddling Centre. I have reviewed the project proposal as well as met with members of this group and toured the proposed site.

As Medical Director of Community Health for Nanaimo/Oceanside, I am a huge proponent of physical activity in any form. At last week's Island Health Regional and Geographic Health Day, physical activity was identified as the key modifiable risk factor for health and wellness (you can reference my presentation to Council on October 4th on the 4E's). As we know, "sitting is the new smoking."

I believe combining increased community access to our breathtaking waterfront in the form of paddling in any form (kayak, canoe, dragon boat or stand up paddleboard) can go a long way to help us all move more. I personally enjoy stand up paddleboarding, but have never been able to partake in this activity in Nanaimo because of the lack of "user-friendly" water access.

I am not an economist, but having this enhanced community access and usage to that particular area of the waterfront would most likely have a positive economic impact through revitalization of local businesses.

In conclusion, I am hopeful that you will see that this vision is good for Nanaimo both from a community health and business perspective and give this group Approval in Principle.

Yours sincerely,

Derek Poteryko, MD, CCFP, FCFP

Medical Director of Community - Nanaimo/Oceanside, Island Health
Behavioural Medicine, Nanaimo Site Faculty, UBC Family Medicine Program
Medical Director, Central Island Smoking Intervention Clinic