



AGENDA
PARKS, RECREATION, AND WELLNESS COMMITTEE MEETING

September 26, 2018, 5:30 PM - 7:30 PM
Board Room, Service and Resource Centre,
411 Dunsmuir Street, Nanaimo, BC

Pages

1. **CALL THE MEETING OF THE PARKS, RECREATION, AND WELLNESS COMMITTEE TO ORDER:**
2. **INTRODUCTION OF LATE ITEMS:**
3. **ADOPTION OF AGENDA:**
4. **ADOPTION OF MINUTES:**

a. Minutes

3 - 6

Minutes of the Parks, Recreation and Wellness Committee Meeting held in the Boardroom, Service and Resource Centre, 411 Dunsmuir Street, Nanaimo, BC, Wednesday, 2018-JUN-27 at 5:30 p.m.

5. **PRESENTATIONS:**

a. Arenas Section Update

Darcie Osborne, Manager, Arenas, to provide the Parks, Recreation and Wellness Committee with a PowerPoint presentation regarding the Arenas.

6. **REPORTS:**

a. Update on the East Wellington Park Planning Process

7 - 32

To be introduced by Kirsty MacDonald, Parks and Open Space Planner.

Purpose: To provide the Parks, Recreation and Wellness Committee an update on the park planning process for East Wellington Park.

Recommendation: That the Parks, Recreation and Wellness Committee receive, the report titled "Update on the East Wellington Park Planning Process, dated 2018-SEP-26, for information.

7. **OTHER BUSINESS:**

8. **QUESTION PERIOD:**

9. ADJOURNMENT:

MINUTES
PARKS, RECREATION AND WELLNESS COMMITTEE MEETING
BOARD ROOM, SERVICE AND RESOURCE CENTRE
411 DUNSMUIR STREET, NANAIMO, BC
WEDNESDAY, 2018-JUN-27, AT 5:30 P.M.

Members: Councillor I. Thorpe, Chair
Trevor Heshka (entered 5:35 p.m.)
Howard Houle
Alec McPherson
Daniel McVicar
Ken Milne
Mark Swain
Maureen Young

Absent: Councillor W. Bestwick
Julie Buisman
Marsha Down
Tyler Fraser
Gabby Lent
Calvin Tant
Tracy Vandermolen

Staff: R. Harding, Director, Parks and Recreation
A. Groot, Manager, Facility Planning and Operations
K. MacDonald, Parks and Open Space Planner
K. Gerard, Recording Secretary

1. CALL THE PARKS, RECREATION AND WELLNESS COMMITTEE MEETING TO ORDER:

The Parks, Recreation and Wellness Meeting was called to order at 5:31 p.m.

2. INTRODUCTION OF LATE ITEMS:

- (a) Add Agenda Item 7(a) - Rotary Club Tree Planting 100 Year Celebration and reorder Agenda Items accordingly.
- (b) Councillor Thorpe requested that Agenda Item 6(a) – Fern Neighbourhood Park Improvement Request Under the Partners in Parks Program, be moved to follow Agenda Item 4 – Adoption of Minutes.

3. ADOPTION OF AGENDA:

It was moved and seconded that the Agenda, as amended, be adopted. The motion carried unanimously.

4. ADOPTION OF MINUTES:

It was moved and seconded that the Minutes of the Parks, Recreation and Wellness Committee Meeting held in the Boardroom, Service and Resource Centre, on Wednesday, 2018-MAY-23, at 5:30 p.m. be adopted as circulated. The motion carried unanimously.

5. REPORTS:

(a) Fern Neighbourhood Park Improvement Request Under the Partners in Parks Program

Introduced by Kirsty MacDonald, Parks and Open Space Planner.

Delegation:

1. Drew Peters provided the Parks, Recreation and Wellness Committee with a presentation regarding Fern Park and the Partners in Parks request from residents which included:
 - park location is situated in a large space that can accommodate many people/families and is in a quiet area of the neighbourhood;
 - plan to maintain the agriculture heritage of this area in the new park plan;
 - currently there is no safe place for children to play;
 - plan includes picnic benches, removal of dead trees and replanting with mature fruit trees;
 - fundraising has been going well and donations have been confirmed from local businesses; and,
 - playground will be the first to be built, budget for the playground is \$50,000.

Committee discussion took place and included:

- the Partners In Parks program and its benefits in the community; and,
- how the donations that have been made and future donations will be secured.

It was moved and seconded that the Parks, Recreation and Wellness Committee recommend that Council allocate \$25,000 from the 2018 Partners in Parks Program, and \$20,000 from the Deferred Revenue Account for Future Partners in Park project, for Fern Neighbourhood Park improvements. The motion carried unanimously.

6. PRESENTATIONS:

(a) Facility Planning and Operations

Art Groot, Manager, Facility Planning and Operations, provided a presentation regarding Facility Planning and Operations.

Committee discussion took place regarding:

- different types of energy sources such as solar power;
- facility maintenance now and for the future, managing those facilities and assets; and,
- value of current facilities based on 2016, is approximately \$300 million dollars.

7. OTHER BUSINESS:

(a) Rotary Club Tree Planting – 100 Year Celebration

Introduced by Councillor Thorpe and All Britton, Manager, Parks Operations.

Committee discussion took place regarding:

- tree planting will include native trees in and around Beban Park including the new Steve Smith bike park area;
- the Rotary Club plants 100 trees throughout various communities as part of their 100 year celebration; and,
- trees will be planted in mid-September to October and are consistent with the Beban Park Master Plan.

(b) Correspondence from Adrian Hovestad re: Model Airs Club of Nanaimo

(c) Correspondence form Ron Lychak re: Additional Benches Around Westwood Lake

It was moved and seconded that the Parks, Recreation and Wellness Committee receive the correspondence from Adrian Hovestad, dated 2018-MAR-27, regarding Model Airs Club of Nanaimo and the correspondence from Ron Lychak, dated 2018-JUN-18, regarding Additional Benches Around Westwood Lake for information. The motion carried unanimously.

8. QUESTION PERIOD:

- Adrian Hovestad re: opposed to Model Airs Club of Nanaimo, exclusive use of 2191 East Wellington Road site.

Kirsty MacDonald, Parks and Open Space Planner, spoke regarding:

- East Wellington Park Planning Open House that was held on June 20th, was a success with over 200 residents in attendance;
- the online survey is still available for residents on the City of Nanaimo website at <https://www.nanaimo.ca/your-government/projects/projects-detail/east-wellington-park-planning>;
- 2191 East Wellington Road is currently in the flight path of helicopters landing at West Coast Helicopters Maintenance & Contracting Ltd on Boxwood Road; and,
- there are currently no limitations or bylaws in effect for helicopters in that area;

Richard Harding, Director, Parks, Recreation and Wellness, stated that the City of Nanaimo would need to create a Bylaw or Policy regarding drones and/or any type of flying device being used within the City of Nanaimo limits.

9. ADJOURNMENT:

It was moved and seconded at 6:32 p.m. that the meeting terminate. The motion carried unanimously.

CHAIR

CERTIFIED CORRECT:

CORPORATE OFFICER

DATE OF MEETING | SEPTEMBER 26, 2018 |

AUTHORED BY | KIRSTY MACDONALD, PARKS AND OPEN SPACE PLANNER |

SUBJECT | **UPDATE ON THE PLANNING PROCESS FOR EAST WELLINGTON PARK** |

OVERVIEW

Purpose of Report

To provide the Parks, Recreation and Wellness Committee with an update on the park planning process for East Wellington Park.

Recommendation

That the Parks, Recreation, and Wellness Committee receive the report titled “Update on the Planning Process for East Wellington Park”, dated 2018-SEP-26, for information.

DISCUSSION

At the meeting of the Parks, Recreation, and Wellness Committee held 2018-MAY-23, the Committee passed a motion recommending that Council:

- (a) direct Staff to work with the Nanaimo Model Airs Club to explore suitable locations for use of Model Aircraft; and,
- (b) undertake a park planning process for East Wellington Park to determine appropriate land use strategies for the site including the exploration of a pilot site for the Model Airs.

East Wellington Park

East Wellington Park is a 12.7 hectare property located at 2191 East Wellington Road. The property is zoned PRC-1 Nature Park and lies within the Agricultural Land Reserve (ALR). The property became park in 2014 when the City of Nanaimo entered into a land exchange in order to expand the Millstone Greenway. Under the land exchange agreement, the City transferred 4.5 acres of land from a City owned parcel at 155 Westwood Road in exchange for this property. **Schedule A** outlines the park location.

The property has an irregular shape and is confined between the Millstone River on the south and a vegetated rocky escarpment to the northeast. The property falls within the floodplain of the Millstone River and seasonally floods. The property is classified as an Environmentally Sensitive Area (ESA)—seasonally flooded Agricultural Field on the City of Nanaimo’s Habitat Atlas. The property was historically used as an agricultural field to grow hay and has annually been hayed since becoming a park.

Planning Process

The report dated 2018-MAY-23 outlined a four stage park planning process (see **Schedule B**). Stages 1 and 2 of this process have now been completed.

1. Public Engagement:

An open house was held at the park site on 2018-JUN-20 and was attended by approximately 200 people. The open house was advertised using onsite signage at the park, through Social Media, and by paper notice mailed to residents of the East Wellington/Jingle Pot neighbourhood.

A public input survey was available online for five weeks and at the open house. The survey was completed by 209 respondents. Full survey results are available in **Schedule C**. The majority of respondents currently use the park for dog walking (42%). Other common responses included nature viewing (16%), walking (15%), and model airplanes (14%). The majority of respondents identified with living in the East Wellington/Jingle Pot neighbourhood or Central Nanaimo. Common themes from the public input are summarized below. Many of the themes are complimentary, but some are in conflict.

- Leaving the site as natural as possible and maintaining it as a Nature Park
- Support for a trail/boardwalk around the site
- Interest in a trail to connect East Wellington and Westwood Roads
- Adding park amenities including benches, garbage cans, and a dog-bag dispenser
- Improving access from the parking lot entrance to trail/park (grade change)
- Fencing and/or revegetating the site boundaries
- Improving riparian and bird habitat
- Embracing the wetland area
- Having some productive agricultural use of the site
- Interpretive signage to explain what is special about the site
- Consideration of an area for kids to play
- Consideration for dog-off-leash use of the site
- Enforcement of dog on-leash rules
- Allowing multiple shared uses of the site (model airs)

In addition, several project stakeholders have been interviewed regarding the site, project, and potential future partnerships including; the Nanaimo Astronomy Club; Nanaimo Model Airs Club; Five Acre Farm; Agricultural Land Commission; and City staff in the Park Operations, Public Works, and Environmental departments.

2. Biophysical Assessment

Aquaparian Environmental Consulting has been hired to update the biophysical analysis of the park property that is seven years old. An updated study with site conditions, features, and recommendations is expected to be completed in fall 2018.

Model Airs

Ideal sites for aircraft flying have an open character and satisfy all Transport Canada requirements in respect to distance from an Aerodrome and populated areas. Long-term, the Model Airs would like to have one or more locations in Nanaimo that they can fly. These sites would be well situated away from cars, roads, water bodies and heavy pedestrian traffic areas and have a mowed runway area.

Staff have identified several sites which may be appropriate for flying and have shared these sites with members of the Model Airs. Sites which meet the Model Airs needs could be tested on a trial basis in the future. Sites are still undergoing the review process with the Model Airs Club members.

Next Steps

Staff will move ahead and begin Stage 3 of the planning process. Review of the biophysical assessment as well as balancing community values and needs will be a focus in this next stage. A draft “East Wellington Park Land Use Plan” will be available for review when Stage 3 is complete. Suggested sites for use by the Model Airs will also be presented in the future.

SUMMARY POINTS

- Stages 1 and 2 of the East Wellington Park planning process are now complete
- An open house to give input into the project was attended by about 200 people.
- A public survey was completed by 209 respondents.
- Stage 3 of the East Wellington Park planning process is beginning.

ATTACHMENTS

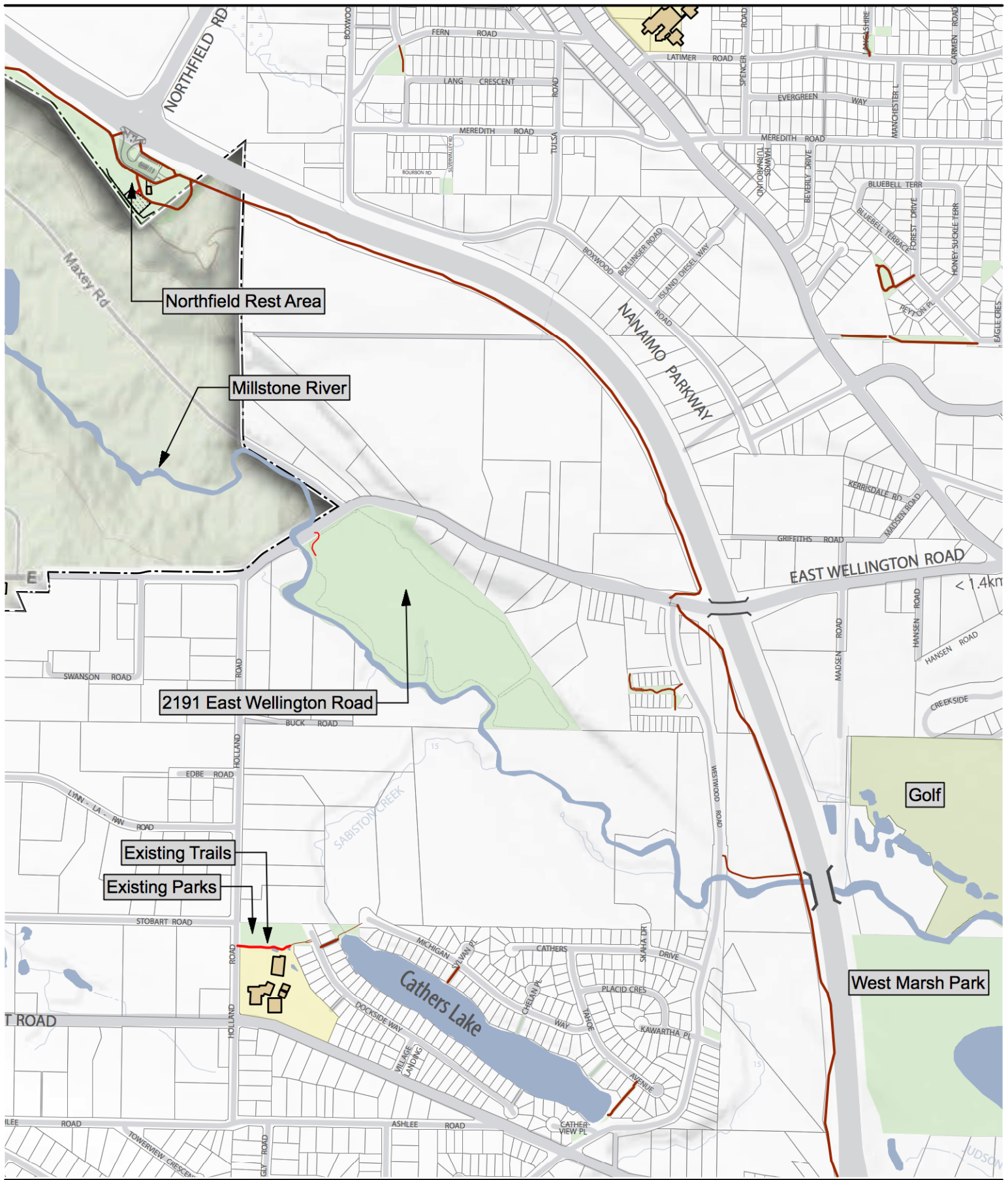
Schedule A: East Wellington Park Location
Schedule B: Approved Park Planning Process
Schedule C: Full Summary of Survey responses

Submitted by:

Kirsty MacDonald
Parks and Open Space Planner

Concurrence by:

Richard Harding
Director, Parks and Recreation



Schedule B: Park Planning and Public Engagement Process (Approved May 23, 2018)

Stage 1—Review Existing Conditions

- Develop base maps and surveys of the site
- Review Biophysical assessments

Stage 2--Assess Priorities for Park Use and Improvements

- Meet with stakeholder groups to discuss park issues and land use strategy ideas (astronomy club, neighbours, dog walkers, Nanaimo Model Airs and others)
- Hire a Qualified Environmental Professional to review the 2011 biophysical inventory and potential impacts to the site by various park users.
- Hold Public input session #1 on site
- Administer public survey regarding park uses and desired visions and strategies
- Construct a portion of the City website as a communications forum for planning documents and surveys as well as using radio, face book, twitter, and newspaper and site signs for communication about the process.

Stage 3—Plan Preparation

- Assess survey results, stakeholder input, and expert reports
- Draft park vision and improvement plan prepared based on input and site opportunities and constraints
- Consider a pilot project for the Model Airs at the East Wellington site as part of the assessing and plan development
- Present draft plan to Parks Recreation and Wellness Committee and Council for review and approval to have the draft plan reviewed by the public

Stage 4—Plan Review and Adoption

- Present draft park vision and land use strategy to the public and stakeholders for review and input at Open House #2 (plus social media website, face book, twitter, draft plan displayed at the Park and Recreation Centres.)
- From public review, update and present the final land use strategy to the Parks Recreation and Wellness Committee for approval and forwarding on to City Council for consideration.

East Wellington Park “Check-in” Survey

Open online from June 4-July 21, 2018

And at open house #1 on June 20th, 2018

209 responses

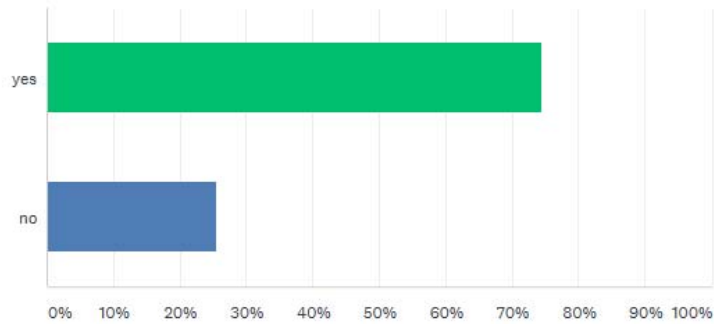
Q1

Customize

Export ▼

Do you currently user East Wellington Park for recreation?

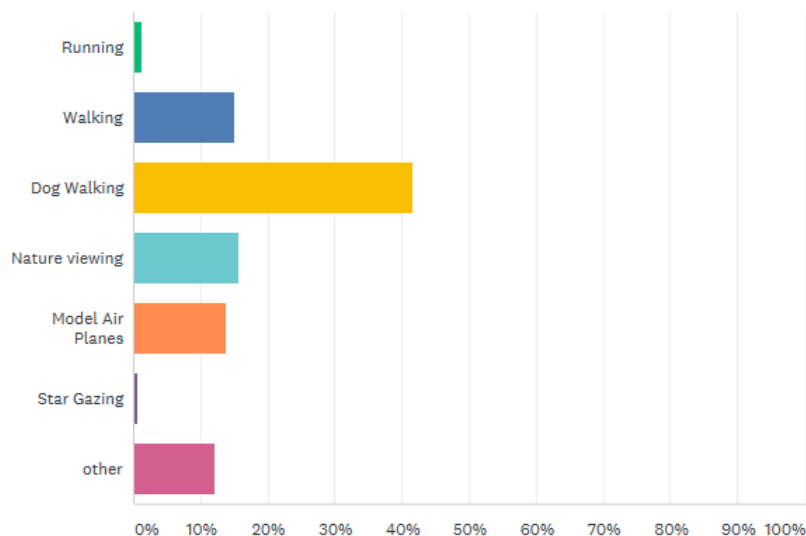
Answered: 208 Skipped: 1



ANSWER CHOICES	RESPONSES
yes	74.52% 155
no	25.48% 53
TOTAL	208

If yes, what activities do you use East Wellington Park for?

Answered: 173 Skipped: 36



ANSWER CHOICES ▼	RESPONSES ▼	
▼ Running	1.16%	2
▼ Walking	15.03%	26
▼ Dog Walking	41.62%	72
▼ Nature viewing	15.61%	27
▼ Model Air Planes	13.87%	24
▼ Star Gazing	0.58%	1
▼ other	12.14%	21
TOTAL		173

Other comments:

I love this beautiful park! It is a real treat to walk somewhere that is not a trail in the woods, and that is not a manicured park. It is a floodplain field with birds and wildlife and it is a great place to observe the change of seasons here. I walk my dogs, I look closely at the plants and trees and I marvel at the vista from one end to the other. I love the way it gets so wet in the spring that you need tall rubber boots and how tall the grass gets in the summer. I love how the frost settles on the leaves of the trees in the fall, and how a mist lies in it on those cold winter days. This is a special place.

Walking with and without dogs. Have also come at night to stargaze. Also love the nature viewing as well.

Running, walking and dog walking.

Dog too..

Nature viewing

Running, walking, play area for kids

Skating on frozen pond that occurs every year. It is a shallow gathering of water. Perfect for skating with no risk of falling through. Nature viewing.

Wild harvesting berries, nettles.

I would like to choose more than one option – we used it for walking, nature viewing, running and ice skating when it floods and freezes (which is not often).
Just to be there!!!! Nature
I would fly a drone here potentially.
Walking with kids, fruit picking, skating.
I come here because it is peaceful, mostly unmarked by people to relax, take photographs.
Attempt to bicycle around perimeter with kids. Too soft and grass too tall. Needs packed gravel trail. Would be great to add some small bike obstacles for kids.
Have ridden my snowmobile...lol
Do not use – it is not a friendly place to use with all the off-leash dogs.
Blackberry picking and quiet time.
I use the park for a multitude of uses, your survey only allows one choice above. Nature watching and exploring, are second to dog walking, someone in my family attends this property every day of the week. We live down the road less than a km.
Flying a UAV (drone); walking, nature viewing.
I've only gone a few times to "run through the meadow" with my daughter when the grass gets long.
Nature viewing and walking (survey allows only one selection)
Biking
Walking, fruit picking, skating when weather permits, wildlife viewing.
Our property overlooks the EW Park, which adds a peaceful pastoral element to our view from the top of the escarpment. We also enjoy walks along the paths while watching the myriad birds that utilize the field and surrounding habitat. Locals pick blackberries in season.
Wildlife viewing and as a habitat for migratory birds.
The survey does not make sense – it has no statistical validity, it is possible to use the park for multiple activities...run, walk, do walk, view nature ALL AT THE SAME TIME and star gaze. I have done all of the above activities and watched the other users have near misses with helicopters on the base landing flight path to Boxwood Road. Including drones/model aircraft and a powered parachute flyer who only quit after a helicopter flew low straight over him. I have also watched/tried to stop out of control off-leash dogs ripping apart farm livestock, and had to clear up lambs and sheep with their throats torn out. Also tried to warn dog walkers from being attacked by bears that were stalking them down the river. I can supply names of people attacked. Cougar has also stocked people.
When possible but part is not maintained for that purpose.
Use the hay to feed livestock.
NOTE: your survey does not allow for multiple activities to be selected. This should be changed. Our family uses this park for walking, nature viewing and some berry picking, but not as much as we otherwise would because it is treated as a dog off-leash area by a considerable number of people. I would definitely use this park for many other activities including kite flying, drone flying, picnics, and a myriad of other uses that require a large, open space. It is difficult to overstate how this sort of activity is limited by off-leash dogs in the park.
I practice flying my multicopters there. I design and build drones with six or eight electric motors and use this wide open space to tune their programming and behavior. This is an ideal area because it is away from the coast, where planes fly and free from overhead power lines and wires.
FPV drone flying (sub 250g)
Model Electric Helicopters
In the past, I worked as a helper on those lands with the hay harvest.
Geocaching! I have 1 geocache hidden, my son had 5, but several have been damaged or removed. Only 3 exist now.
I want to be specific and say off-leash dog walking.
Your survey should allow people to pick multiple activities. I selected the one I use it for most often.

Multiple of your options. I'm often here birdwatching. I have about a years worth of birding data and observations from my time there. I'm often with my dog and I have been star gazing.
I use it for a variety of the above options.
Ogling at the potential for farming!!!
Geocaching
It only allows one option but we have used it for walking, skating when the little bit of water froze.
Didn't even know it was a park.

Question 3 - What improvements would you like to see made to East Wellington Park?

Answered 179 Skipped 30

Some improvements to the path that goes around the perimeter. If the path was paved it would allow grater accessibility but a bark mulch path would be nice too. A garbage bin and a port-a-potty or composting toilet would be an added benefit. An entrance sign stating what types of flora and fauna are found there as well as the history of the land would be great.
Fencing and dog poop bag dispenser/collector along East Wellington Road. No additional fencing is required as dogs are contained by parks physical features – Millstone Creek, very steep ground to the east and dense groves of blackberries.
Bark mulch the perimeter path to improve accessibility for those who have some mobility challenges. Spread Wildflower seeds along the edge of the path and permit them to grow and self-seed. Don't over mow! Let nature do its thing!
Designated on and/or off-leash areas for dogs. Proper garbage disposal amenities for litter and dog-bags. Interpretive signage with environmental and ecological information.
Farm use increases. Community garden.
A trail along the east side of the park against the cliffs.
None. We enjoy the park as it is – all four seasons. We were pleased to see the addition of some safe parking.
I would like to see the nature restored like it was before with all the animals roaming around.
If there could be a trash can by the parking lot so people don't litter, this will help keep it waste free and natural as possible.
Leave it alone. As is.
None. Leave it as natural as possible. Fix the back fill brought in by the city years ago to make the parkway. No environmental people were brought in to ensure it was graded properly which no prevents run off quickly. No asphalt or planes. Nanaimo can be a model for future generations to be as natural as possible. Bears and birds and cougars need this area.
Return the field area back to natural fauna and restore the banks of the river back to their natural stage. No parking lot or runway. Maybe a fenced off do run close to the road and a trail system that is for on leash only. It would be nice to see nature come first! Restore the area as best we can to original so that the wildlife has a place, THEN and only then do we access how or what human activities will this area allow.
Walking dogs from around the SPCA there is no proper path to get in. Gets very muddy in winter.
Keep it grassy and open. Add parking and perhaps regularly maintained garbage cans. Keep this area dog-off leash park.
Signage on East Wellington RD is good, but there is no signage on Westwood Rd side. Doesn't show up on city maps or google as park.
Off-leash designation – four separate benches around perimeter of trail, picnic tables near parking area, garbage can, doggy-do bags, stairs and ramp from parking area to field defined paths.
Management of wetland...planting trees, increasing biodiversity.

Can't get into the park from Westwood Road unless we walk along on the road to East Wellington but there is no path and cars go quickly there. An entrance from Westwood Rd would be great.
Access through far end of park to connect with Westwood Rd.
Official off leash area, a fence along East Wellington Road.
Access from Westwood Rd – currently you can almost access from here from - the crosswalk path next to the bridge but there is a small section of right-of-way on private section of land that needs to be finished from what I understand.
Washroom facilities, water to wash off mud, maybe a playground for young children.
None
I would love to see it become an off-leash dog area, the only improvement I can think of is a fence along the highway.
Fence along the road.
Dog off-leash park, maintained path, grass growth (mow it!)
Steps at the parking lot as it is hazardous to get down from your vehicle.
Gravel path around perimeter, maintain the river to prevent flooding upstream. Fence perimeter to prevent dogs from wandering then make it off-leash. Keep the park as natural as it is currently.
Develop park to resemble Buttertubs Marsh
Garbage cans for poop bags, off-leash dogs, better entrance (stairs)
Garbage cans, doggie bags.
Activities, engagement clubs
Changes that keep the park safe for the future. Today's housing has minimal (?) for kids and people. This site can do a lot for the mental well-being.
Minimal changes, love the natural setting.
If currently designated as an on-leash dog area, then this should be enforced. If not enforced (like it is now) then it is a de-facto off-leash area. To meet both objectives, make a fenced area for this use.
Do not make an off-leash park! We walk our dogs on leash, dogs running amok have killed our livestock by crossing the river. We don't see nearly as much wildlife as we used to (e.g. migratory birds) and we often encounter bags of dog feces thrown in bushes and left in the field.
Trail access for Suhana/Camas subdivision
More native plants – restore some of the wetland areas. Please leave as natural as possible – minimal pathways – no paving!
If possible small fenced area for dog part but rest keep it natural by river fenced.
Just to preserve nature, no asphalt, dogs on-leash, I have heard scary stories.
Improved Safety features – access, parking lot, pedestrian/cyclist separation on hill.
I would like to see natural features and improve natural functioning of side channels and enhancing appropriate vegetation.
Completely cordoned parking to not allow wheeled bikes, motorbikes. Garbage cans and doggie bag dispenser. Protection of bird life. Trees planted along the roadside parking, and native plants where the blackberries used to be.
Packed gravel trail, some optional bumps, bridge features to challenge kids. Grass cut so it's not 4ft tall. Also great to use for RC airplanes but grass needs to be cut accordingly.
Minimal fencing along East Wellington to protect/contain off-leash dogs. Dog bags/waste arrangements.
Back to nature. Return field to natural state and vegetation.
Model airplane runway!
Walking paths and bicycle paths for young kids and family to use.
RC park
Model airplane strip, astronomy facility, dog walking trails.
Improvements to allow a mac sanctioned flying field for model airplanes.
Increased parking

All weather trail around perimeter
Andy development would be an improvement, but definitely a walking path through the park would be a great start.
Very little, I like the idea of having a natural space to visit, potentially adding fencing nearest the road and along the river as well as the very back of the field where it borders on private property.
More benches, some rhodo plantings.
Facilitation of multiple uses with designated areas to minimize potential conflicts.
I would use the park if there were trails throughout with park benches strategically places. Also like to see a picnic shelter with picnic tables inside. An area for children to play on equipment would encourage many families to enjoy the park.
Drinking water fountain for people and dogs. A couple benches, other than that it would be best to leave some nature alone.
Keep as much nature as possible, bike/stroller/pedestrian access from Westwood Road.
Please leave it as it with no development other than the following: drop the silly leash law as nobody obeys it and dog walkers have been using this field longer than anyone else for recreation and few or no incidents and mutual respect; allow model aircraft folks to build their runway and restrict off-leash dogs in the "immediate" vicinity. DO NOT BUILD ANY ACCESS ROADS...just parking if necessary
A raised walking bark mulch path for the winter months when it turns into a flood plain.
Restored flood plain and riparian corridor, fenced dog park management of wildlife corridor along the river. Restore migratory bird wetlands-screened from the dog park. Boardwalks if area remains flooded.
A park similar to Terra Nova park in Richmond. It's beautiful, fun and maintains its natural beauty
Trees, gardens, art, but mostly some ways to avoid the flooding in winter so better drainage!
Just leave it, it's very beautiful as is.
I would like to see a path around the park and walkways on the flooded plain areas.
A fenced in dog walk as currently most users just let their animals run free and they do not stay in the park boundaries.
The park is well used even though there is limited infrastructure and the park is not well known. A lot of people drive to the park and bring their dogs, walk, operate R/C toys, view birds, etc. In addition to traffic on East Wellington, risk to pedestrians, cyclists has increased significantly, especially in the section between the Millstone bridge and the hill going up East Wellington toward the highway. Critical improvements are needed to address safety concerns: I would like to see the following improvements: Parking lot (consider relocating it to another area, (i.e. not in the front of Maxey, where there is even more risk to cause accidents). Physical separation between motorists, cyclists and pedestrians for the portion between the bridge and the top of the East Wellington hill. Physical separation could be achieved using concrete blocks, bollards, etc. Signage and/or paintings would not be efficient and would create a false sense of security. We have seen many times drivers cutting the corner and driving on the bike/walking path, leaving cyclists and walkers very vulnerable especially young kids or when not facing traffic. Kids and adults are walking regularly on that section of road. It gives access to grocery store, banks, and schools. It would be more used if it would be safer. Improved parking lot, improved visibility to get out of the parking lot, garbage collection? Off-leash pen, irresponsible dog owners combined with off-leash access have caused numerous dog attacks. Leash required for the rest of the park – limited infrastructure (benches in a couple of unique areas of the park to allow for wildlife viewing). Recognition that this area has unique agricultural value by planting fruit trees along the east side of the park. The area is also ALR and cannot be converted into a park without some thought. This field is wet all the way to July which is a very unique feature. Bike paths along the east side boundary of the park at the bottom of the cliff, giving access to Westwood Lake Road. In order to do that, access to three properties to the south would be needed.
A communal grove with free access to food grown on site.

It needs to be reverted back to the wetlands it was. Dogs should be banned they are killing the farmers sheep. Cougars and bears have been stalking the dog walkers as well. If it is put back to original use the goose problem would disappear from city parks and cemetery. Keep the people and animals out.
Much, much better drainage. There is a river to one side and a creek to the other, there is no good reason for it not to drain. Large fenced, off-leash dog park. Wildlife corridor along the river, ideally fenced so a whole lot of fencing it would seem. Parking has been improved, maybe asphalt rather than gravel though. Dog paws and gravel can be a bad mix, plus the gravel migrates to the road making it hazardous for any two wheeled vehicles, especially at the intersection with Maxed Road.
Leave it natural
Inforce dogs on-leash and don't let them use the whole park. It is degrading the natural habitat.
None – it's nice as an open natural field.
Since it is both situated on a flood plain and abuts the sensitive and protected Millstone River. I would like to see it remain in its natural condition. However, a garbage can and the standard dog waste bags and bin should be added to ensure dog owners pick up after their dogs.
As an environmentally sensitive area, this park should be rehabilitated using appropriate native vegetation. An opportunity may also exist for wetland creation, but keep bullfrogs and other invasive species in mind.
Good as is other than adding stairs from the parking lot onto the grass, a bit steep.
Replanting of native vegetation to expand waterside wooded areas, which are of particular value for red and blue listed species and sensitive species.
Keep it as a nature park. A very important stop for waterfowl and other migrating birds.
A vital wetland flood plain with the river held back by a man made embankment to prevent flooding, needs the flood channels reopened. This will prevent more house flooding upstream or likely damage to the road bridge. Part of an important wildlife corridor, a river wildlife corridor needs to be fenced to minimize any more dangerous wildlife/human interactions. Up to 4,000 migratory wildfowl a night used the park as a rest over. Off-leash dog walkers in an on-leash park with zero enforcement from Bylaw officers who publically state it is not their mission to enrich the city by prosecuting people. Dog owners encourage their dogs to chase birds off, creating issues of birds on school playing fields and calls to cull nuisance wildlife. Either fence and screen the perimeter footpath from the rest of the wetland/flood plain and wildlife or maintain the park originally designated as the Nature Field as a wildlife park and an attraction to draw tourists to Nanaimo.
Parking on E.W Road needs to be enlarged once the park has become known to the general public. Access from the parking areas to field needs to be improved. Little in the way of "improvements" is needed, no sports fields, no plastic jungle gyms, etc.
Designated as a RC model park so people have a safe place to enjoy the hobby and stop flying at school fields.
Have a stone amphitheater for educational purposes for youth/adults regarding history/natural environment ... indigenous history....
Ramp from parking lot to field level for those of us that have difficulty with steep grades. Improved access to the river as existing was destroyed by spring flooding. Proper refuse bins for dog waste and of course "official off-leash status".
All dogs should be leashed, I have found dogs aggressive, running wild, owners not picking up feces, litter, and lots of broken dog toys. City garbage cans for the ones who are responsible. A wildlife corridor, removal of dams restricting water flow.
<ol style="list-style-type: none"> 1. No more dogs off-leash! I have walked there regularly with my young child and have encountered large dogs off-leash (including: pit bulls on 2 occasions) in the field and parking lot. Find for the dog owner but unsafe for everyone else. Limiting dogs to a portion of the park and prohibiting them in the remainder may be the best solution. 2. Increased concrete barriers along East Wellington shoulder from top of hill above Maxey to Holland. Many locals walk and cycle to the park and the shoulder is not safe due to

increased and speeding traffic, blind corners, and park visitors parking on shoulder forcing pedestrians to the road.
3. More traffic speed enforcement. Traffic typically travels well over the speed limit on East Wellington RD, especially down the hills above Maxey and Holland.
4. Proper garbage cans for dog waste.
5. Signage about wildlife known to us the park would be nice.
6. Viewing platform of Millstone River with some signage about the fish cycles may give people access and prevent folks from making their own trails.
Maybe a fence along the road? Kind of like it the way it is though.
Path along perimeter
The park is viewed as a dog off-leash area. The park should be more multi-use than that.
A designated area for flying electric planes and models.
Please no dog parks and no dogs, sorry be we have enough, let the people who do not want to be part of that lifestyle have some freedom away from barking fighting dogs and poop!
Much better parking and access
Garbage for dog waste, possibly cut grass twice per summer.
To be made off-leash please ☺
Fish and riparian habitat enhancement
Trail improvements
A large garden like Butchart Gardens would be amazing
Off road parking and proper layout for RC flying.
A designated model airplane flying site. A small short grass or dirt runway for taking off and landing and a designated flying area. A baseball field is currently my flying field and is big enough.
The grass/field needs to be kept short.
None required.
I would like to see a grass runway or area for setup and safe flying area.
A driveable path to the eastside center of the field where one could fly the models from the trunk/back of a vehicle. A turn around would be nice for exiting.
Cut a small grass strip for the models
Proper facility for flying model planes with washrooms
An area of short grass so we could use planes with landing gear.
A landing strip for electric model airplanes.
Custom space for model airplane flying (electric motors) including tables, shelter and toilet.
Provide a runway
Model air park
Only to make it an off-leash park for dogs.
A play area for families similar to Mansfield, but without the soccer field.
This land should be developed to include a portion of it be used for sustainable organic agriculture examples.
The long grass needs to be mown and hay removed. This usually happens, but usage dwindles until it can be used again.
I would like places to put poop bags and that they be cleared on a regular basis. Otherwise, I think that it is wonderful for the dogs and owners.
Better separation from the road (fence/hedges).d
Dog off-leash area
Dog on-leash, lots of song birds and sparrows use the fields.
Improved parking, a gated fence along East Wellington and dog poop bag dispenser with suitable waste collection can.
A proper path around the whole field and stairs to get down into the path from the parking lot.
Would like to see it say off-leash.

Safety
I would like to see proper garbage that is taken care of by the city. A water tap would also be beneficial. Other than that, I would mostly like to NOT see Improvements to the park. It is great how it is.
Benches, garbage can.
A path around the park
A nice spray park for children or water slide park! The Island does not have a water park anywhere.
More multi-trail paths available for various activities, I.e. dog walking, non-dog walking section, bird watching.
No improvements it perfect as is!
Stroller friendly walking trails.
None Leave it wild for birds and animals.
Leave it how it is, its undeveloped farm land and beautiful as it is.
None until the city streets are properly fixed.....have you seen the paving job on Dover Road?
Fencing, at least partially
A perimeter path along the edge of the park and connect it to Westwood Road to connect with the Trans Canada Trail.
Turn it into some sort of agriculturally productive area.
Bird viewing fir in the field and by the creek? Dog poop bins and bags? Water?
Walking trails, history of the area
Fence aquatic area, keep allowing dogs.
More walking paths, bathrooms, a play structure for toddlers and older kids
Seating, clear trails
Space for public events
Would be great if dog park would stay with a walking path and maybe a small washroom.
Fence along road, otherwise leave as is.
Like it the way it is, keep it simple and natural, maybe add some fencing to keep animals from running out of the park onto the road. Had a close incident once.
Garbage bins and bags for dog feces.
Possibly a raised trail so that the full field can be utilized year round, Dog waste station and garbage can.
Poop bags provided and garbage along the park.
Pathway
Perhaps a raised platform for water inundated areas?
Looping trail, a few benches, not much.
None
Leave as natural as possible, green is good!
Native trees and plants, walking trails, interpretive signs telling about plant species, etc.
Don't @#\$% with it !
Grass is hard on those of us with bad allergies in the spring.
Fenced dog area, community garden, playground, ball field.
Fenced dog off-leash area and baseball field would be perfect also playground could be cool.
Increased drainage to alleviate constant flooding
None
All weather trail from East Wellington to Westwood Bridge and a circle track/trail around the perimeter
More flowers and trees
Fenced on the road side of the park, leveled to avoid water pooling during winter.
Toddler friendly
Running/walking path

Fencing
Water drainage, it's unusable for months of the year, better access to the creek.
Possible chip trail for runners/walkers? Playground / field for kids and perhaps fenced area for dogs
Playground
Please keep it an off-leash park – those are the only people who use it!
Make paths so people can use it for walking, hiking, viewing nature.
A fenced off-leash dog area would be great.
Trails and a viewing platform of the marshlands.
Link to other parks in area via sidewalks or trails (ie: Westmark Road and Westwood Lake)
Dog off-leash area
Grade a portion of the property, 500' x 50', to make a grass runway for electric powered model aircraft.
Grass cut and area to land and take off small electric aircraft, with parking
Garbage cans, plastic bags for dog poop, gravel path.
Model airplane runway and possibly more parking.

Question 4 - What other wishes or ideas would you like to share for the future of East Wellington Park?

Answered 151 Skipped 58

I understand that the local model airplane club is interested in that area as well, It's an awesome place for flying model airplanes. I would hope that every group that is interested in using the park is also able to respect and care for its natural beauty.
Love the nature element to this area. All the birds and other floral and fauna make it a special place within the city limits. We have some great walks among our forests at Collery Dam, Westwood, etc. We just don't have another large open area to walk the dog, so soak up some sunshine and breathe in nature. Don't over develop the park.
Maintain as agriculture land.
To maintain the park as a wildlife area for birds and wildlife. There are eagles, hawks, turkey vultures, bats and migratory birds that use this area. The bests are most likely nesting in the cliffs. The turkey vultures show up in late march and head south in September. The migratory birds use the area annually during flooding as a stopover. There have been sightings of bears, cougars and deer that transition through from Mt. Benson and along the Millstone River. The area is in a floodplain that floods every year during high rainfall and/or snowmelt from the Millstone River. The water can be up to a meter deep and flows through the valley to Westwood Road. Parts of the field first called makes the most sense with a trail and some benches for wildlife/bird viewing. Any improvement would have to consider the annual flooding and build accordingly. A fenced dog park could be established at the East Wellington end of the field where there would be minimal impact on the rest of the field.
We would like to stress that this is a nature park and we can't improve on nature. An improvement would be to turn it into an off-leash park as there are so few of them. This park allows us to throw a Frisbee and/or chuck a ball.
There should be trash cans by the parking lot so people don't have a reason to litter, but I like the park just the way it is, without any concrete on the field.
I wish there is NO model airplanes. This will disrupt the natural animals and it will get very noisy for people who live close by and for people trying to enjoy the nature.
Leave it as it is for future generations.
Leave it alone, no asphalt, no lanes....natural.
Nature reserve zone along the river that is 100% off limits to all.

A proper path from the SPCA/Westwood Road bridge along the right of way.
Keep this area a dog off-leash area.
Better access from Westwood Road. If you enter from Westwood Road by the bridge there is a sign about 100 paces in that says NO trespassing – which is confusing because there is a city right-of-way to get to the park from there. Needs to be clearer that you can enter on the right-of-way and the sign needs to come down or explain where people can cross to the park.
Covered picnic area, running water, fence at front.
This land is FANTASTIC farmland. The city should work with local farming groups and turn this space into a civic/community style farm. Or, the city could help make this a demonstration farm site. The city of Richmond has established municipally supported agriculture projects. Nanaimo can too!
Better signage so more people know about it. It's a beautiful spot to take walk your dog. Better access from Westwood Road.
Would like it to be a dog off-leash park. Whenever we are there are no others or possibly one other walker, often with a dog off-leash as well.
Better access. It's only accessible from East Wellington Road at the moment. It is flat so could be made into a sports oval or left as a nature reserve with some access to the creek. But currently only a few residents on East Wellington Road can access it. There are no paths yet from Westwood Road where most houses are and the BCSPCA shelter. I'm sure they would also like to access it to walk animals if that was possible.
Maybe picnic tables and a covered area for larger gatherings like at Bowen Park.
Maintain it as an off-leash dog park.
Its such a large and beautiful space, its perfect to take the dogs there.
Make park officially off-leash (I go everyday and estimate 95% of users are dog owners with their dogs off-leash.
Most of the people I run into, almost on a daily basis are walking dogs. Although it's preferable to be off-leash . It's also good to share with the few who come out for other activities.
It's the perfect place to walk a dog. Keep it mostly like it is.
This area needs to stay as parkland.
Better entrance from the parking area.
Maintain as an undeveloped place.
Benches, garbage pick up.
Dog off-leash area permitted or de-facto pretty much limits the use for wildlife viewing and many other uses. I would prefer it remain an on-leash area and enforced. This would allow for all other activities in question 2.
A trail (natural, not paved) for walkers, runners would be nice to connect to Parkway Trail.
Many children in area that would use the park if access from neighborhood is created.
Like the idea of tying it to a greenway trail through the city.
More monitoring
Cement barrier on side of road. Cars tend to pass the white line with traffic increasing. I worry about safety when I walk and my children ride their bikes.
Bike path to Westwood Road, leave the park as wild as possible, limited infrastructure.
Dogs should have a designated area in a fence, part of the area should be on-leash to protect nature.
I would like to see the park remain as natural as possible because that is why it is perfect just the way it is. The more people and groups that want to have a piece of it, the more likely it will lose its perfect peace. NO motorized anything (model planes, bikes, ATVS, motor bikes.
Dogs should be on-leash if other users are present. Dogs off-leash tend to conflict with runners, RC's, kids, other users. Please keep improvements to a minimum to keep property taxes low and maintenance as a winter coho rearing zone.
Less dogs off-leash, garbage cans.
Approval for model airplane field (on a small part)

RC Park
I believe this park can accommodate many groups on a shared use agreement.
Specified times for shared users.
Keep it Natural, (I.e. enhance the natural flood plain environment) no lights
Nice flower gardens, picnic areas, and most of all a nature playscape for children, with lots of natural loose parts for them to play with, a digging area, stepping stones, natural things for them to climb and perhaps a mud kitchen?
I wish for it to become a formal off-leash area for dogs. It would be my hope that the neighbors properties and livestock are protected as I have heard anecdotally that this is a problem, but never seen it myself.
Some bicycle stands to lock bikes onto
Wetland and riparian restoration; wetland could have floodwater detention as a tandem purpose. Enhanced/restored wetland and riparian area could include a trail and boardwalk with interpretive signage. Fenced designated off-leash dog park; signage to encourage dog owners to pick up after their dogs, along with a bag dispenser, designated model airplane/UAV landing strip; educational signage about safe UAV flying practices and etiquette.
More parking to be made available please as it is becoming more popular.
Possibly something that mimics what was done at Linley Point.
Absolutely no roads, only paths as currently already there.
There would need to be garbage cans for the dog feces.
Dogs on-leash, make sure acts as a natural floodplain and animal habitat
Instead of just flowers and shrubs etc. I would like to see an edible garden, fruit and nut trees. Berries, mint etc. With plaques or signs educating about our edible environment and some of the many uses of our native plants on our BC coast.
Why was this area not considered from BC Housing assisted housing project. It's not near schools or other concerns A twice daily bus could take the tenants to medical appointments, etc.
Please leave it, no need to spend money on something that is beautiful as is.
I enjoy the park being natural. I think the only improvement would be a path and a bench.
A fence put up along the borders of the private property owners whose properties are adjacent to it.
Based on the timing of the consultation. I fear that the plans for the park have already been established. If this consultation is truly a consultation, then I would expect a meaningful consultation including consultation with other agencies and departments within the City of Nanaimo. In my option, an ideal outcome would to satisfy not only all users but also respect the value of the land (agricultural and nature reserve). In this case, not all users like dogs running around everywhere, uncontrolled. I have often seen dog owners parked on the field or the parking lot with their dogs running around everywhere without any supervision. I think this is irresponsible and dangerous for other users. The effect is that one type of user prevents another use to use the park. Therefore, a dog off-leash (not fenced) is unacceptable. If there is going to be a dog off leash area, please make it such that it is a pen (similar to Beban Park), make sure it is located near the road.
Talk to environmental engineer and the farmer above the property . He is a wealth of information.
Maybe a paved trail around the perimeter, for the less abled body.
Keep it natural
Leave most of the land as natural habitat without dogs running free. How can it be called a Nature park as it is now?
It's a nice place that floods often, year round infrastructure would be unlikely. Leave it to nature.
I would like to see all motorized vehicles, including drones and model planes banned from the park, s they create a stressful environment for both the bird life and those park users enjoying the tranquil setting, also a dusk to dawn curfew.

Humans, dogs, cats and Norway rats have plenty of parks, so I am in favor of providing decent space for wildlife.
Off leash dog park, which is what we use it for.
This area with high ecological value that is needed to increase adjacent upland beside aquatic ecosystems. The best use of this land is conservation and sensitive access. Dog parks are better kept away from sensitive wildlife and watershed areas. Particularly, flying model aircraft in a sensitive bird habitat is a bad idea. There are many places in Nanaimo to fly model aircraft that are far better. For example, sport fields are often not used by teams, such as at Beban Park. Those types of areas should be made available at non-team sport occupied times to model pilots for the record, I am an electric model aircraft hobbyist and have built and flown many scale military aircraft and sport planes. I am also an avid wildlife enthusiast and outdoor guide.
Please keep it natural. We humans are fast ruining what little there is left for our activities without thought about the impact of the creatures that call the area home. Let's give them a thought for a change.
Nature tourism is the main island tourism industry. Nanaimo has unrecognized wild habitat assets to draw tourists to stay supporting hotels, restaurants and tour companies, and not just transit through to the ferries. Internationally recognized biosphere reserves and important bird areas are on the island drawing tourists to other parts of the island. Keeping wild habitat assets in cities such as Nanaimo is globally recognized as best practice in city governance. These economic development assets need to be valued and recognized and promoted for the benefit of all.
Continue to let the hay cutting to G. McCullum; allow off-leash dog walking away from E.W Road.
Improve the parking
Outdoor theatre
This is a jewel of a park and should remain as undeveloped as possible.
Ensuring it remains a floodplain.
Would be nice to continue farming the field to some degree, and supporting its use by waterfowl and other wildlife.
Provide waste containers
I would like to see the future trail plan slated for 2020, and how this would connect to other trails.
An area maintained as a runway for model plans would be a great use to me and fellow modelers.
A place for relaxation.
A sanctioned rule abiding model aircraft flying
We have made many great connections with the other people who walk their dogs at this park. Would love to see it made officially off-leash.
City garbage can.
Multi-use trail outside of floodplain areas to connect to Parkway Trail.
Something child/family friendly to take the kids to.
It would be nice to transform it into a park like Beacon Hill Park or a small or a small Butchart Gardens.
Kit flying, RC, rock crawling, other RC activities.
Only that it be developed as a recreational park for wider use than the already plentiful sports fields (baseball) and dog parks.
Some ideas for bug control, in the late evenings, it's pretty bad with mosquitos.
I'd like to see it set up for model aircraft.
Washrooms and uses for other groups. Fences around the outside for dog walkers.
More electric model aircraft facilities (covered area expansion, tarmac runway, signs) Electric models only designation (exclude gas/nitro models).
That the park enforces the on-leash dog walking (Bylaw). People still have their dogs off-leash.
More assess/planned activities by various groups.
Allow electric model aircraft.

Keep it natural.
Ball field
This area is so large community garden could also be incorporated
Community playground!
Leave it as is.
Fence it off on East Wellington Rd as some times idiots ATV and snow mobile on the surface damaging it.
Maybe a pond if possible, small pond and garden.
Community food forest.
Community gardening with walking trails.
Benches
Playground for children of all ages.
Dog off-leash
A natural playground near the parking lot end. www.naturalplaygrounds.ca
Put a traffic light at the intersection of Jingle Pot and Westwood Road, it is unsafe in summer to cross over Jingle Pot.
Other than the runway leave the property as is.
Make it conform to the Canadian MAAC rules and regulations to allow their liability policy to apply to the park.
Benches, lights, drinking water
No
Small playground area with green space and picnic tables.
A restroom facility. It could be closed from 10-8, similar to other facilities in Nanaimo.
Trails, walkways, the land floods and should be allowed to flood, bird habitat, food production for Nanaimo Foodshare programs.
Understand it would be linked with other green space. A proper "trail" would be nice...but the valley does flood in winter.
I go to the park 5 times a week and love to see that so many dogs and owners benefiting from it.
None
More established trail. Often grass over grows the trail and gets very dewy. Also lots of ticks are exposed with high spring grass.
Leave winter coho rearing habitat along Millstone intact. Allow farmer to cut hay in field, keep park as is.
Add a place dogs can swim and play in during the summer months.
I would like it to be a dog off leash area.
Off leash dog park
Water park, spray park.
More access points
Walking trails
Public parks are notorious for dogs running off leash even tho they are required to be leashed, unless in off leash areas...real enforcement is needed.
If its going to be made off leash, fence it between the field and the nearby farms.
Walking paths, picnic tables or small shelter for the community to use as a park.
Create ponds for beauty and for Ecosystem diversification and potential aqua food production.
Dog trail
Off leash park
Clever level trails, bikes, running
Easy walking trails.
Not too much development, natural space is best, improved access and some space for community events.

This has been used for dogs and think it should continue
Leave as is, lovely meadow in spring and summer.
Might be beneficial to have a designated off leash area so those of us who want to walk on leash can do so safely.
Leave to nature
A pump track for beginner bikers
Keep it dog off leash friendly
Fencing, stay as natural as possible.
It is a great dog recreation area as is.
Leave as is, parking lot is good idea, nothing more.
Walking trails only, no bikes, dogs on leash okay
Park area specific for kids without changing too much of the open concept for those people and dogs that go there.

Question 5 - Do you have any other comments you would like to share about planning for East Wellington Park?

Answered 121 Skipped 88

Other than minor access improvements leave park and current park maintenance as is.
I understand some special interest groups are interested in accessing the park, and within limits I feel it should absolutely be a multi-use park. Stargazers are at the park and no one else is. If they want a firm pad to place telescopes then why not. I don't own drones but I hear that those users want access to the park. I am not opposed provided that the hours are limited. Perhaps also only on certain days. Their use must not interfere with those there for a walk, drones can't fly over or harass walkers. If they want an airstrip, limit the width and length of the runway – perhaps 6m x40m. This limits the size of drones that can be launched as well as imposing a self-regulated number of users at one time. The runway would make a great stable platform for telescopes at night. A botanical garden open to the public and free of charge could provide a self-guided tour and educate locals and tourists on the vegetation native to the island.
Dog area could be in a fenced zone to protect wildlife and dogs.
We enjoy taking our young grandsons to the park and explaining to them how this area for recreation works...the grass cutting and gathering, the birds of prey, the geese, not to go too close to the river. We also enjoy the interaction with the other park users who share the same ideas.
I DO NOT WANT model airplanes, runways, if you fly model airplanes you will be ruining animals homes and he peace and quiet of the people's houses that live around the area and it would ruin the nature.
This park should be restored to its natural state. I do not want to have model air planes flying around my house on weekends, having competitions and asphalt in the field. They are too loud and are going to disrupt the animals. The field is best left to be natural as possible.
Don't fix something that's already perfect.
No asphalt, no planes, no off-leash park.
Leave park natural.
I have only lived in this area for 3 years and have come to love and appreciate how peaceful this area is at times. I look forward to the yearly spring music festival put on by the returning song birds, waterfowl and frogs. The deer, quail, and bear that visit are a joy. Fall is especially grand with the changing of the leaves across the whole valley and the influx of the migrating wildlife is pretty cool too! We live right above the park on East Wellington and even though it has only been three years we are noticing a change in the area. As more and more people bring their dogs to the area and let them run loose, especially in the spring, the birds and other wildlife has slowly disappeared. The

thick brush and nesting areas are over run by the dogs looking for something to chase. Rarely do you see the deer in the field anymore. This area is special and care should be taken before we develop, there are not many areas like this anymore. I don't think I would appreciate the sounds of model aircraft flying all day on a weekend or week night, what happens when they have air shows and competitions? We have two dogs and they always bark when people fly their aircraft now and this is happening only once in a while. As for the astronomy club, I would be for that only if there was no road leading into the middle of the park, maybe a nice path instead.
Good for model planes and dogs to both use the park but needs a better path on the right of way from Westwood Road or SPCA for the dogs to use or it's too muddy.
I'd like to see the right of way made into a ore clear path so other people from the BCSPCA can take dogs into the park over the right of way. Signage to be fixed to make it clear there is a right of way.
Use this space as a demonstration site for preserving and increasing biodiversity, and engaging the public in land stewardship through farming and permaculture.
Needs access from Westwood Road side and signage. It's also not list on Google Maps as a park.
Still not many people can access it as only one hard to reach East Wellington entrance. Access from Westwood Road is almost possible but just need a short section completed.
We love the natural rural setting so not a huge development (large buildings).
No
I visit the park every day and hope to continue doing so with my two dogs. I hope you consider making it an official off-leash dog park.
It is a great space for people and pets to get exercise and have fun. Save some effort and money by not over developing, leave as natural as possible. Users can adapt and experience the seasons, flooding, tall grass, hayed field. It is all interesting and part of the experience.
NO
The section of the Millstone River that runs through this park appears to contain the bottleneck that causes the river to back up and spill over into the fields in the park and the properties on Maxey Road. Attention should be paid to maintaining the river to limit the effects of this flooding. Log jams and debris jams exist along this section of the river and should be cleared before flood season. Ways to decrease the bottleneck should also be explored.
Do not allow model airplanes and drones to ruin the wonderful environment that is green space.
Been using this field for many years.
Please leave room for dogs to run free, very important.
Keep as natural as possible.
Leave it as is, realize that this special space needs to survive and flourish into the far future.
I feel it is a wonderful dog under control park.
It's nice to have a flat area as natural space. Other uses such as a kite flying, picnics and many other uses that are enabled by open space is a nice asset to Nanaimo.
No drones! Noisy with the potential for invasion of privacy to surrounding residents. Preserve as nature sanctuary.
No sidewalk access on E Wellington Road. Therefore is accessible from Camas Rd/Suhana.
We love walking our dog here and readily admit off-leash times when there is no one around. I regularly pick up garbage I find – nice that someone has brought in garbage cans.
People should walk their dogs with leash.
Long term vision would be connect this park to Buttertubs Marsh, via an underpass under the highway.
Drones are dangerous and disruptive and we are in a helicopter flight path area.
EW Park could be a haven for wildlife and people. Activities I have seen over the years I've been coming there: family picnics in the tall grass, seniors painting the scenery, wedding photos using the great hay wheels as props, children skating and playing hockey when the flooded field freezes over, people training their dogs for obedience, horseback riders. On the negative – cyclists pushing us off

the path, drones and airplanes – noise disturbance and upsetting wildlife, more garbage has become visible since word is out it is a dog park! Poop bags everywhere flung in the bushes.
Is there options for nature viewing platform, creek, spawning fish, etc. Make a destination at the far end so there's a point to hike to the end with kids.
Nanaimo needs an electric r/c field, too many people fly in the parks.
No dog park, we have enough.
The hay does not make for pleasant walking as dogs are on narrow trails. The dog owners do not tend to clean up after them. Some may do but not all.
RC Park
Beautiful site. Congratulations to the city and parks for their visionary look in our city.
Washrooms?
Allow dogs by all means, but not, please not, free range.
I'm glad this is happening. Parks are essential for healthy lives.
Have you considered designating a portion of the park for lease to local farmers that cannot afford to buy land in the region? It could also be a great site for a small community farmers market.
Thank you for asking our input.
No
DO NOT ENFORCE LEASH LAWS FOR DOGS...EXCEPT IN VICINITY OF MODEL AIRCRAFT (ELECTRIC ONLY) RUNWAY.
I hear one of the suggestions is for model planes. If that went through there would have to be limited hours of operation due to noise factor.
A meaningful comprehensive consultation process for the public.
Why was this area not considered for BC Housing's assisted housing project? It's not near schools or other concerns. A twice daily bus could take the tenants to medical appointments, etc.
Save the money for a project that is important.
It is such a blessing to have this green space in our neighborhood.
Leave the non dog areas alone to be used by the wildlife who have used the fields forever. I've seen every sort to wildlife walk, fly or swim through that area. Not so much lately due to the free running dogs.
Make the area safe for all, reduce the chance of conflict and value all users. Value the land (ALR) develop the plan that is responsible and for which we can all be proud of. Thank you.
Nuh uh
No
Read above
I was very pleased when the district decided to purchase the field and that we so enjoy watching the park through its many changes throughout the year, including the months it is flooded by the Millstone River and the occasional times in winter when those waters freeze enough to invite skaters to the park. It is a wonderful natural asset.
NO.....
NO, all is good as is.
I hold a master of Community Planning and uphold the principle of using the right spaces in the community for the best uses. I want to see East Wellington Park as an area where habitat restoration is successful and backed by proper biological studies and science bases decision making as an example of sound community planning.
City governance and planning needs to be more proactive than reactive to situations like East Wellington Park that have developed happenstance due to complaints from a few dog owners and their own limited personal self-interest being chastised for having their dogs off-leash. One woman had her arm broken by an out of control dog. Another woman similarly knocked down and left phoning for help unable to get up by the dogs owners. A local farmer has lost 8 sheep from dog attacks from the park since 2012 when the park was first being put forward. Island farming and farm

land needs to be valued and protected and supported. As many users as possible need to be represented. The public consultation period is incredibly short severely limiting public response. There are substantial grant funds available and free well qualified expertise from a number of organizations to assist with restoring such vital flood plains and wetland areas and important wild habitat assets. These include Ducks Unlimited, Birdlife, Wildlife Habitat Canada, VIU to name a few. I am a former Environmental Management professional and project consultant for Birdlife, IUCN, WWF and several international governments. I would be happy to donate my time to the city to assist this process in any way I can help.
EW Park is a flood plain for the Millstone River. This is its primary function and should be retained for this purpose.
If made into a RC Park would be nice if it was a club with people joining and having MAAC insurance.
Think outside of the box, with heavy public influences.
AS a regular, frequent user of the park I believe the barest minimum of improvements and relief from harassment by Animal Control contractors would go a long way with the many hundreds or even thousands of residents that enjoy the wide open spaces with their pets, hobby aircraft and stargazing activities. This is a floodplain after all that spends 6 months a year underwater....winter freeze even presents a nice safe open air ice skating opportunity ...it is a place dearly loved by the community that have enjoyed it for so many years now. Ok until the Animal Control contractors arrived on the scene it was quite tranquil, now the imminent potential threat of fines and confrontation has scared many users away and a constant stress factor for those who still enjoy taking their animals for a run in the tall grass.
That development doesn't affect upstream residence, farms and land, and ensure proper water flow for Millstone.
The park is a beautiful spot but it currently caters primarily to dogs off-leash. It would be nice to get dogs back on-leash so others can feel safe using the area. Also would be nice to slow traffic and increase safe shoulders to encourage locals to walk/cycle to park.
No
Picnic tables
There is no sidewalk leading to or from the park. Installing some form of pedestrian access would really improve the appeal. A sidewalk on Holland RD, and/or EW Road would assist both the park, and the schools in the area.
Wonderful location for a QUIET flying club!
Proper access, parking and good signage to keep things safe some way of keeping the rule breakers and noise makers out. The close by residents should not have to put up with any more disruption than any other beside a park, with soccer or baseball. If this park was to be used as a model aircraft flying field, it should be electric only, with restricted operation times of certain types (eg: helicopters). A flying field here would also lessen the use of playing fields being used in a unrestricted (unsafe) way of flying model aircraft.
I think this is a perfect place for an off-leash dog park. Due to the marshy and flood floodplain nature of most of the field it is undesirable for most other uses for around 75% of the year. We usually visit the field twice per day, and 99% percent of the people we see are using it to enjoy recreation with their dogs. Very occasionally we see some flying a drone, or using the long grass to take pictures in the summer which is also great as the field is so big it is easy to separate the dogs for others enjoying themselves. Thank you so much for asking the community their thoughts.
Millstone floodplain provides significant ecological values, including fish habitats. Hay farming should either be reduced or stopped and enhancements made to improve ecological conditions (floodplain, riparian, and aquatic habitats) in association with enhancing parkland uses such as trails.
Park should be open to all citizens all times and NOT be controlled by any club RC or others. Terms of reference states "Equitable access to parks, recreation and wellness services and facilities by "all" citizens.

Vancouver has designated RC flying parks, it would be nice to have one in Nanaimo where we can set up multigt racing events.
Very little would be required to make it suitable.
I have been a resident of Nanaimo for 59 years and involved in the hobby for 30 years. I think it's time we had a safe flying site like other communities in the province and country.
For safety reasons exclusion dates and times should be specified for model flying. Also, the weight of the models should be limited (foam models only?) Due to noise considerations all models must be electric only. Model flying should be open to the public and free, otherwise will continue to occur in city parks and school yards.
It should be available to electric model airplane flyers.
The park board cuts a wide trail through the shrubs at the east end of the park for the walkers. This would help contain any threat of picking up ticks.
No.
RC model flying site is required as government restrictions are going to limit this activity which will eliminate a great hobby and harm business that support the hobby.
No
No sports fields, swimming pools, ice hockey rinks, convention centers, please. Keep it in the ALR. Food and flower production with trails and information on sustainable agriculture.
It's a great area. Enjoy the green space.
I wish to continue using this space as an off-leash park. It is great the dogs can run and on grass, swim if they want. This is a wonderful asset to the city and for dog owners. A one of a kind. My three dogs have benefited tremendously by what this park provides.
It's nice to have a space for dog walking.
Very beautiful park, maybe some care taken to preserve the riparian banks of the park. Lots of trees have been wind thrown and lost due to the banks collapsing.
I have been using this park and perimeter trail for more than 10 years as an off-leash dog area. I have seen and know of dozens of other dog owners who use the area for off-leash walks. Please keep the park use as an off-leash area!
Just would like to see this be a safe place for dogs and kids of all ages to go to play, maybe add a place for dogs to swim during the summer.
Many people currently walk their dogs off-leash at this park and I have never had any problems. I would really like to see it continue to be an undeveloped area where responsible dog owners can take their dogs off-leash.
No
Some type of green energy project.
Please leave it as parkland
No cement/metal playgrounds. Maybe a wood walkway around the outside for accessibility but leave it as natural as possible.
Clean up the rest of the city first
Nope
Playground, petting zoo
No
Please have dog poo bags and a garbage can to dispose of it. Tired of stepping in it.
No
No
It's wet in the winter/spring. Not sure that we can/should manage that.
Dog friendly or dog off-leash would be nice.
You have to remember it lays in a flood plain, harvest the hay when it is ready. No real development for amenities, etc.
Sufficient parking space

Might need some drainage or outdoor ice rink in the winter.
The flooding that occurs every winter would definitely need to be addressed to make the above suggestions a reality.
The EW parkland is situated in the perfect location for a community playground and family sports outdoor space.
Great place to walk the dogs off-leash.
Make it multi-us, don't just cater to dog users...share the area.
Please don't wreck it.
A community garden/food forest.
If it is kept as an off-leash park, please don't enclose it.
Keep it simple and as natural as possible.
This is an opportunity to provide a legal field for model aircraft hobbyist in Nanaimo.
No
No
No

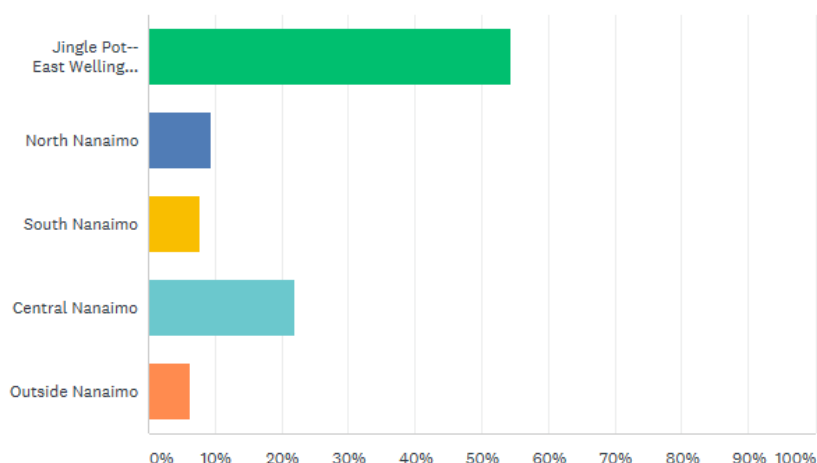
Q6

Customize

Export ▼

Which best describes where you live?

Answered: 204 Skipped: 5



ANSWER CHOICES ▼	RESPONSES ▼	
▼ Jingle Pot-- East Wellington Neighbourhood	54.41%	111
▼ North Nanaimo	9.31%	19
▼ South Nanaimo	7.84%	16
▼ Central Nanaimo	22.06%	45
▼ Outside Nanaimo	6.37%	13
TOTAL		204

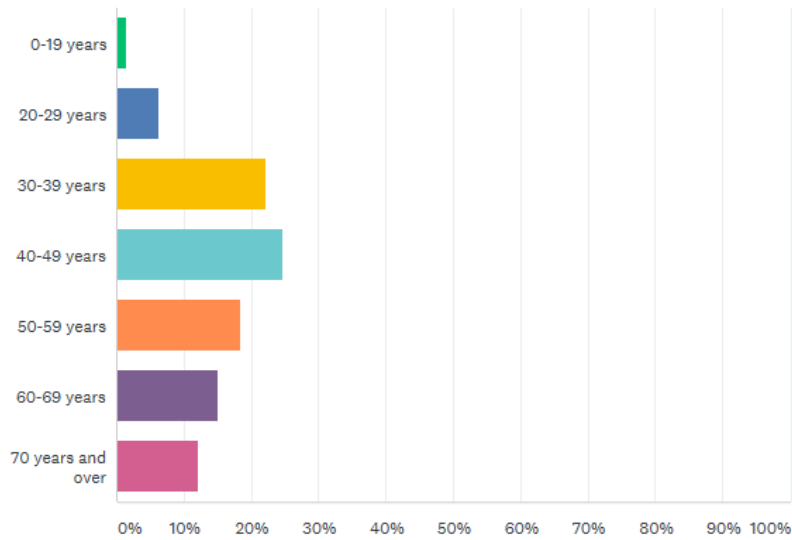
Q7

Customize

Export ▼

In what age group are you?

Answered: 207 Skipped: 2



ANSWER CHOICES ▼	RESPONSES ▼	
▼ 0-19 years	1.45%	3
▼ 20-29 years	6.28%	13
▼ 30-39 years	22.22%	46
▼ 40-49 years	24.64%	51
▼ 50-59 years	18.36%	38
▼ 60-69 years	14.98%	31
▼ 70 years and over	12.08%	25
TOTAL		207