



**PUBLIC HEARING**

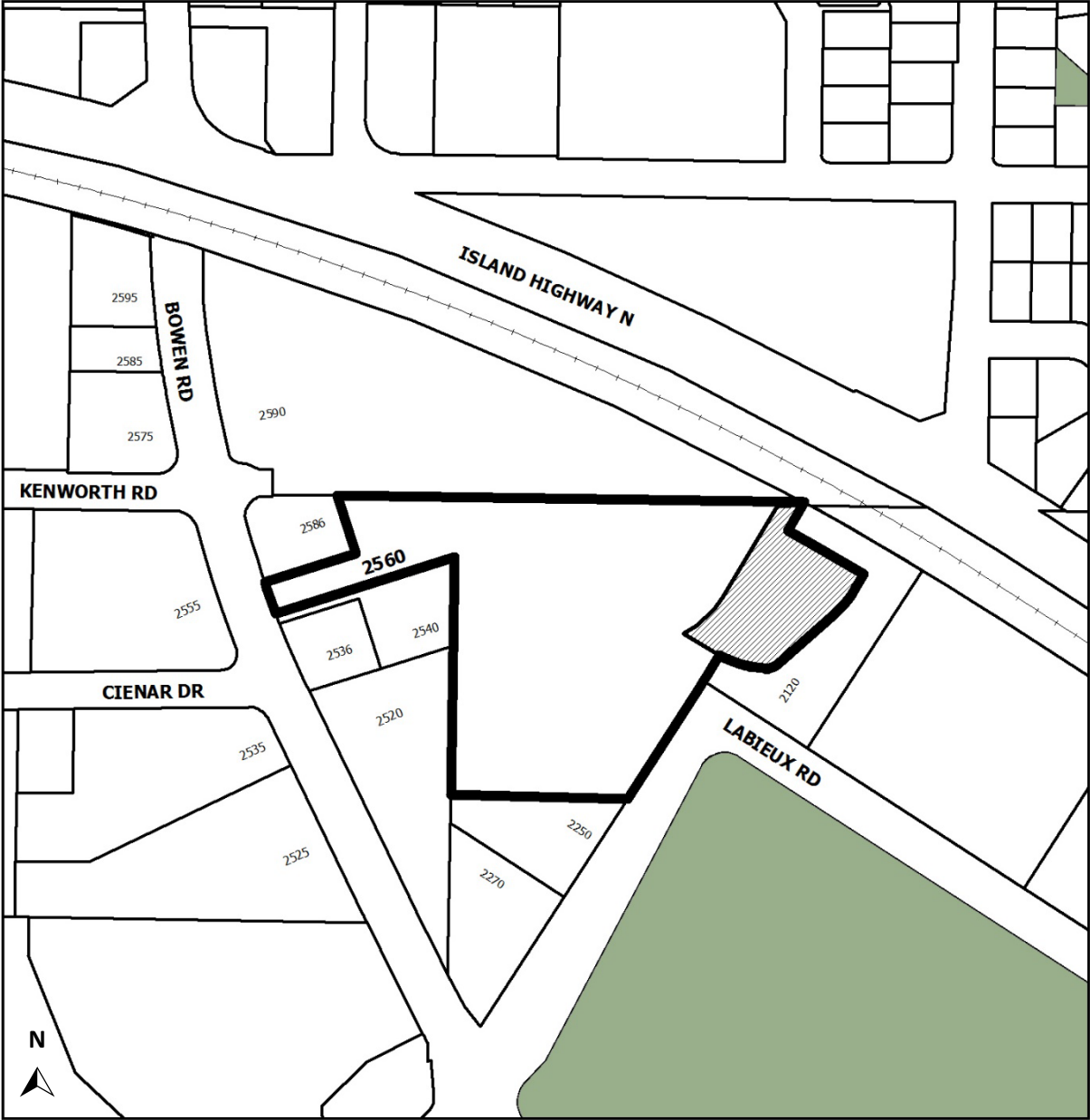
**2018-MAR-01**

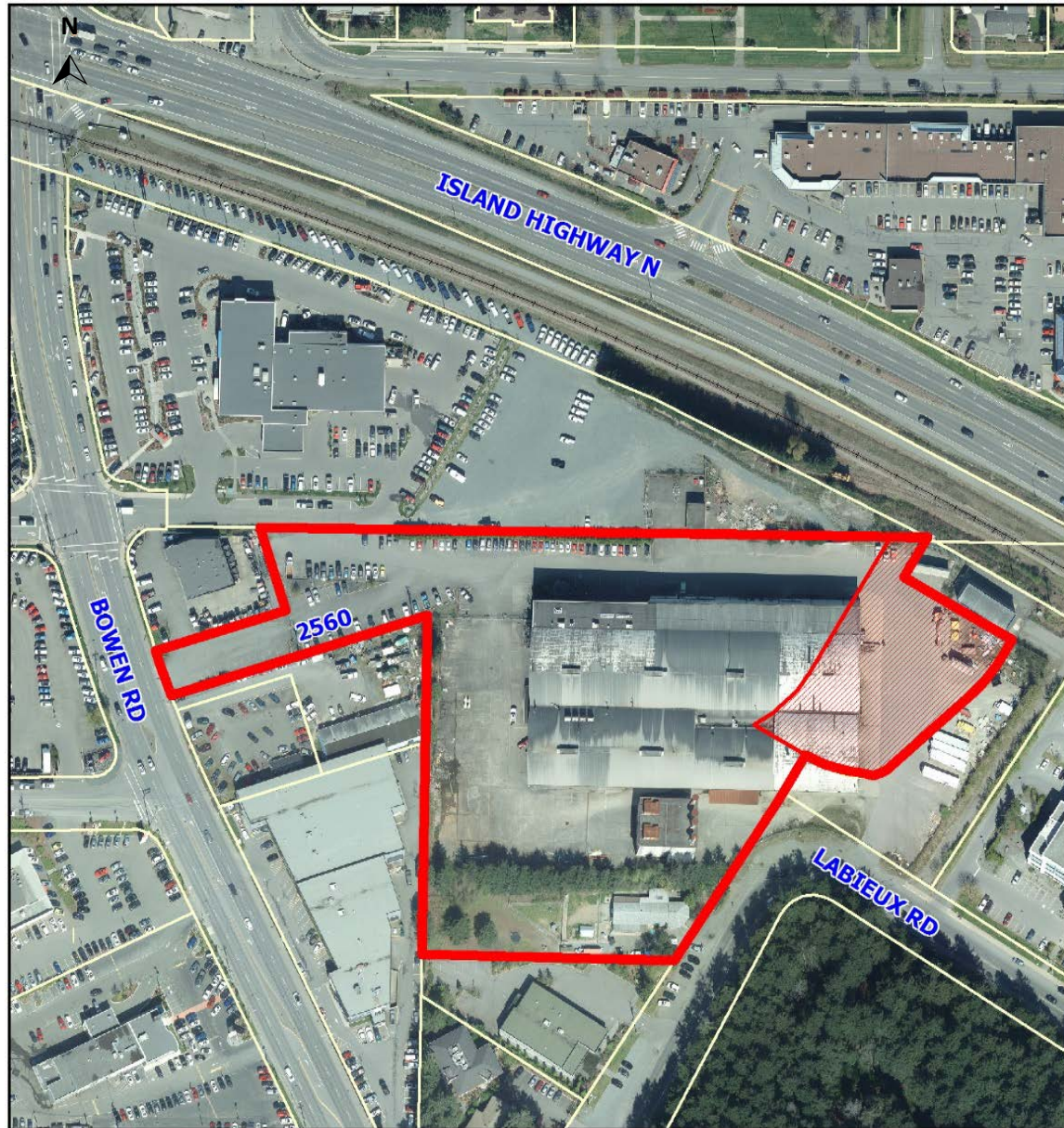
# **Bylaw 4500.117 – RA378**

## **2560 Bowen Road**

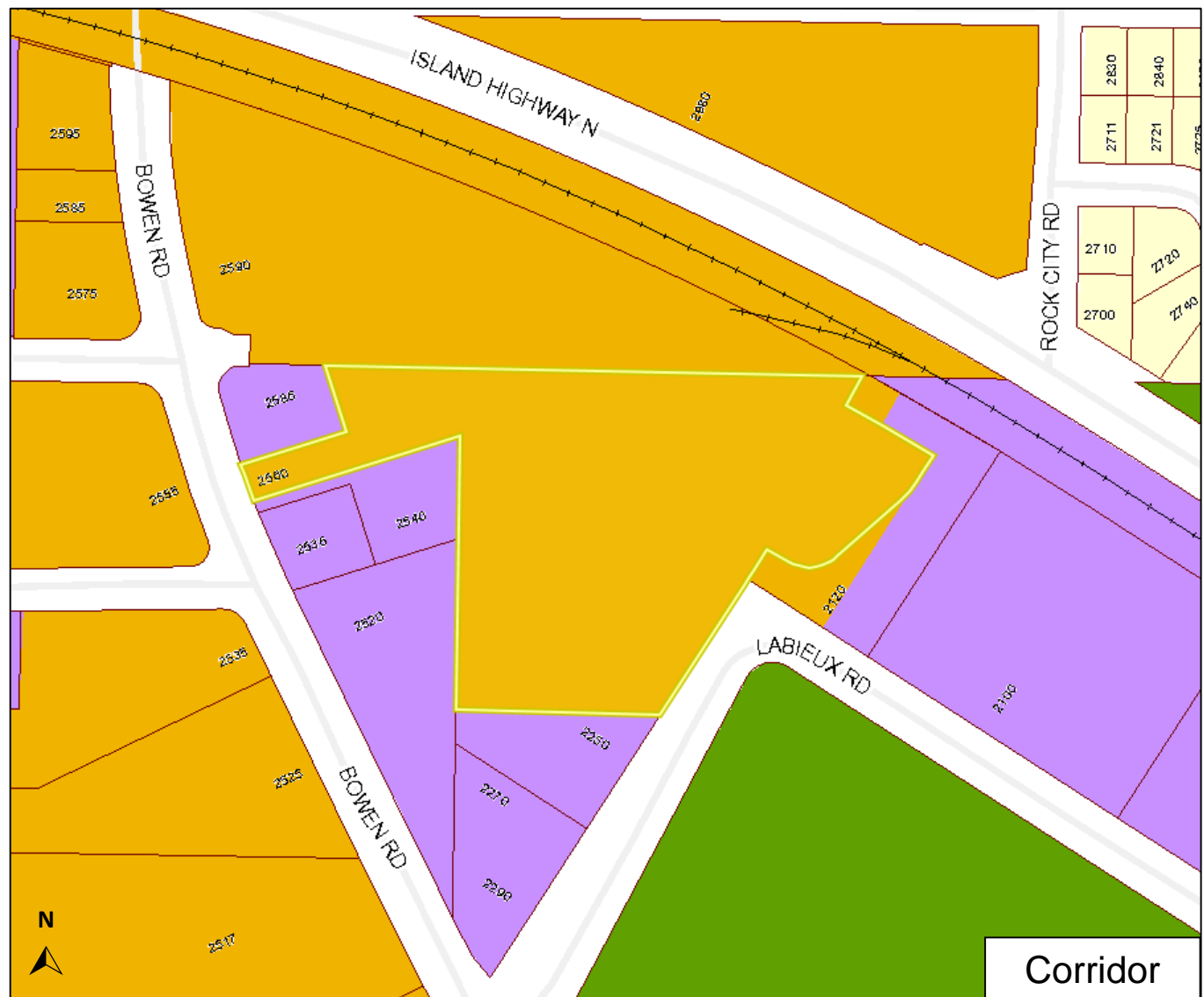
To rezone a portion of the subject property to allow automobile sales, service, and rental as a site-specific use in the COR3 zone.

Location Plan –  
Subject Area





# Official Community Plan Designation





# Context Plan



0.0M  
MIN. SIDE  
YARD SETBACK

A = ±12.3M

CITY OF NANAIMO PUMP STATION

MIN. REAR  
YARD SETBACK  
7.5M

MIN. PLANTING  
YARD SETBACK  
3.0M

GARBAGE ENCLOSURE

CUSTOMER/ STAFF PARKING

PROPOSED BUILDING

4

MIN. FRONT  
YARD SETBACK  
3.0M

A = ±29.7M

MIN. FRONT  
YARD SETBACK  
3.0M

A = ±34.4M

SITE ACCESS

DISPLAY PARKING

2.7M  
BIG STALL

6.7M  
DRIVE AISLE

5.8M  
PKG STALL

18.5M

SERVICE PARKING

FUTURE ROAD

KENWORTH ROAD

LABIEUX ROAD

SITE SCHEMATIC  
SCALE - 1:250

LABIEUX  
ROAD