

The RDN Solid Waste Management Plan Review Process

The City of Nanaimo
Committee of the Whole Meeting
August 18, 2014

Larry Gardner, Manager of Solid Waste
Sharon Horsburgh, Senior Solid Waste Planner



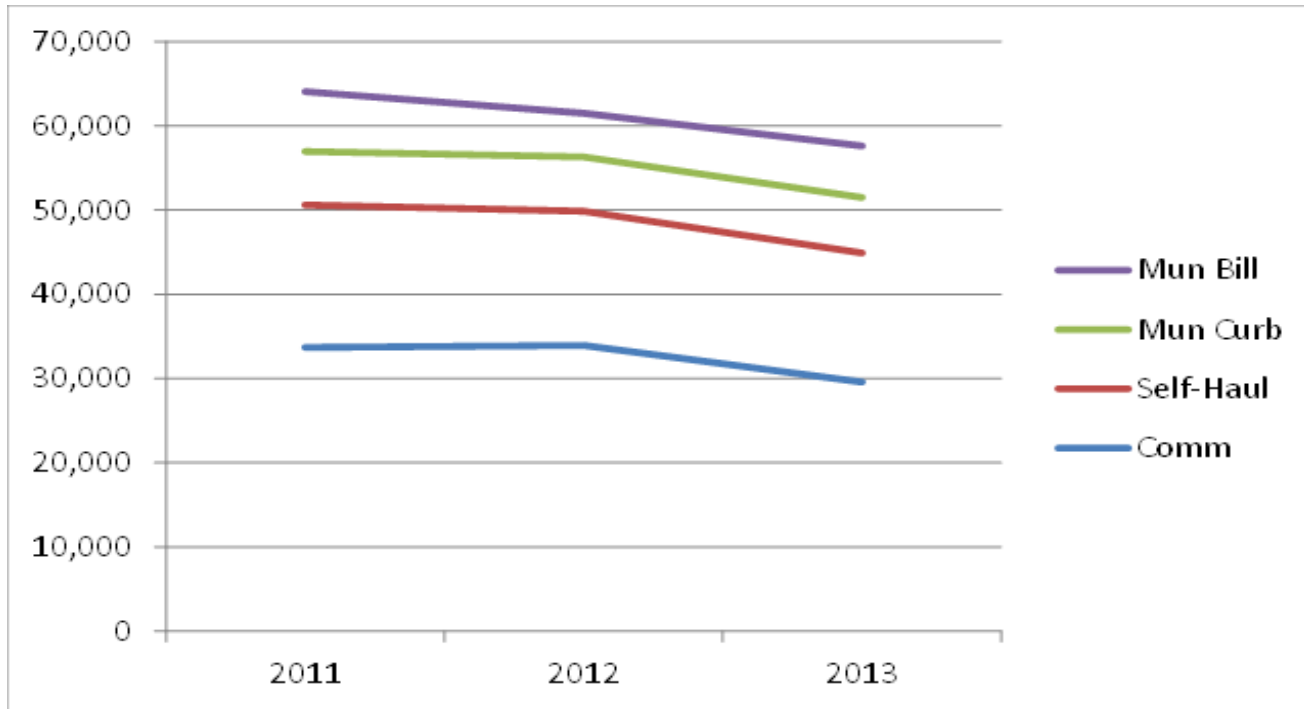
Presentation Overview

- Background on waste
- SW Economics
- Solid Waste Management Plan & Public Consultation

Snapshot of Waste in the RDN

- 50,000 tonnes/year to regional landfill
- RDN provides curbside collection to 27,455 single family homes and the City provides collection to 26,457
- 3 Multi-Material Processors (paper, metal, plastic)
- 2 Drop-off depots (i.e. GIRO, NRE)
- 2 Commercial Compost Facilities (i.e NOW, Earthbank)
- Numerous stewardship drop off options (e.g. beverage containers, electronics, oil, antifreeze, HHW, tires, batteries) throughout the RDN

Materials Received at RL/CRTS



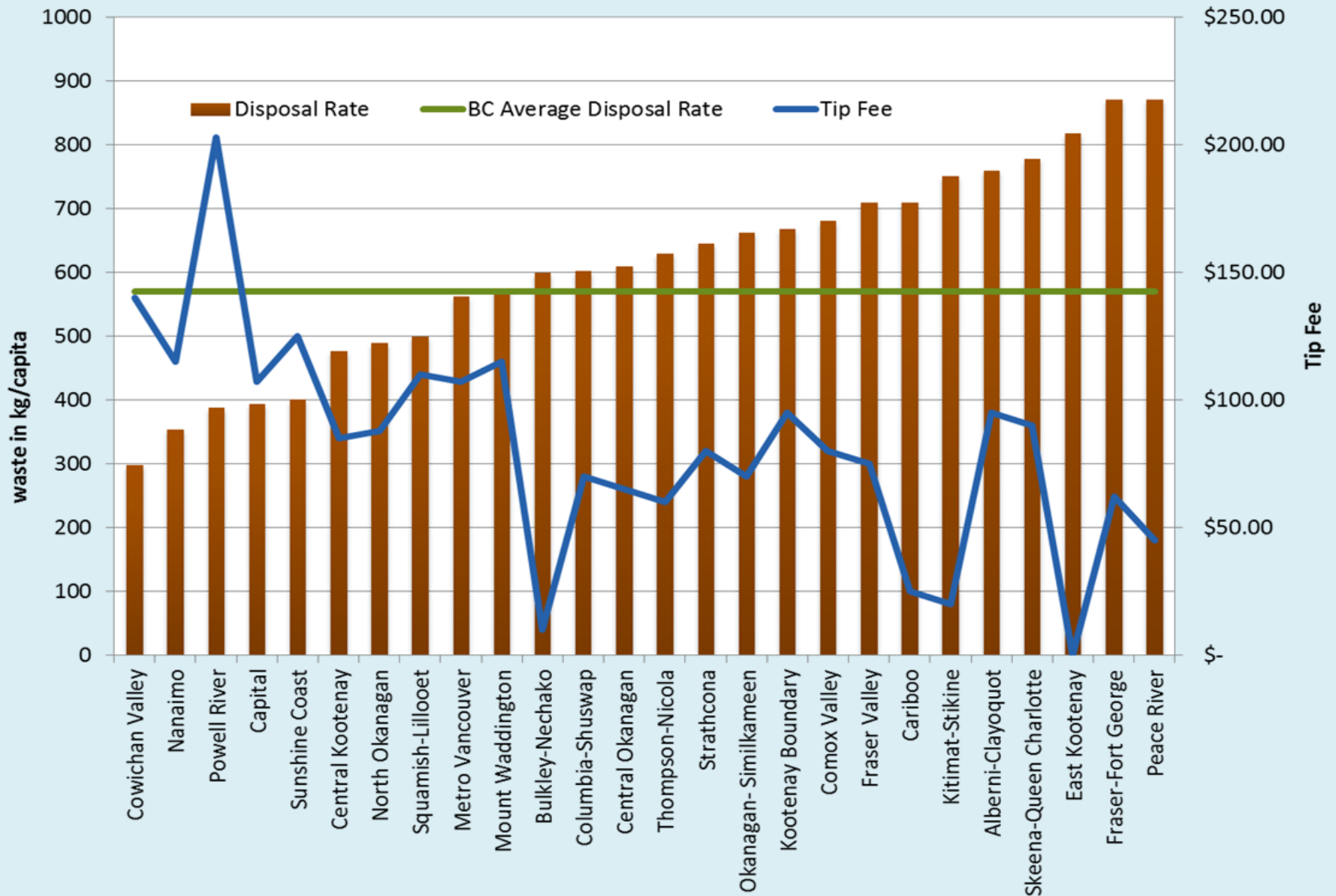
3 year period: declining tonnages for our 4 main business types: Municipal Billable (QB, Lantzville and City of Nanaimo), Municipal Curbside (Electoral Areas and City of Parksville), Self-Haul customers (including small businesses that haul their own waste) and Commercial Accounts.

Waste Stream Management Licenses

- 12 licenses
 - Processors, depots, composters
- Why?
 - High standard/level playing field
 - Protect and enhance diversion rate
 - Commitment in our approved SWMP
 - Waste Tracking



Disposal Rate vs Tipping Fee



Economics of Waste

“Is there a business case for zero waste in BC?”

Findings from MOE, Zero Waste Business Case, Draft, May 2013 :

- Depending on implementation (i.e., 62% vs 81% diversion):
 - \$56 million and \$126 million of annual net economic benefit;
 - create between \$27 million and \$89 million in new annual GDP;
 - generate between \$755,000 and \$2.5 million in new annual income tax revenue for BC.

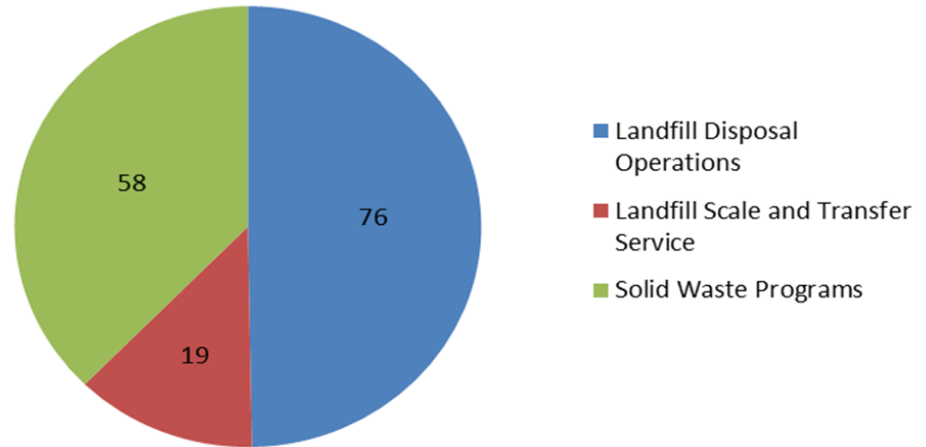


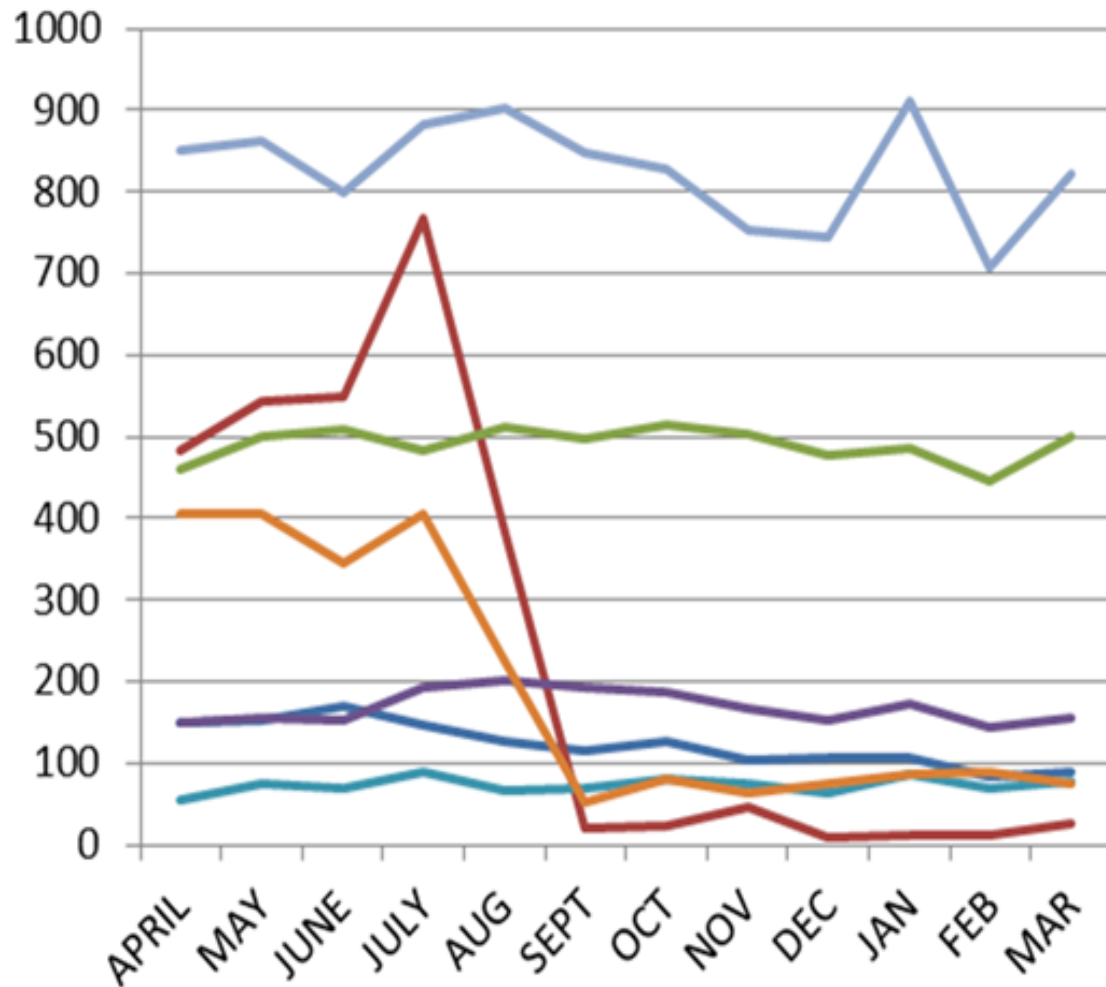
LANDFILL TIP FEES

Tip fees are a closely guarded secret.

- Large USA landfill \$25 to \$30 per tonne
- Roosevelt Regional Landfill, Washington
 - \$24us/ton
 - 2011/2012 data reported to the Department of Ecology
- CVRD; USA disposal
 - \$90/tonne (includes shipping)
 - \$140/tonne tip fee (50% tax req.)
- RDN \$125/tonne (3% tax req.)

SNAPSHOT RDN SW FINANCIALS





Graph depicts
number of
loads taken to
Regional
facilities from
April 2013-
March 2014

Why Review the SWMP?

3 Main Reasons:

1. Legislative Responsibility:

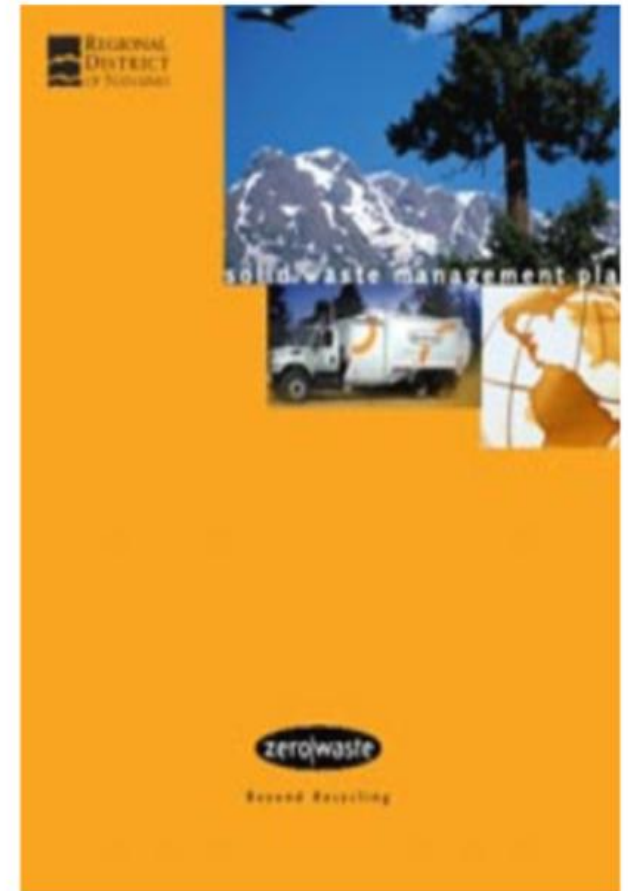
-Province mandates RD's to produce SWMP's

2. Increases Public Awareness

-Public demand efficient services to manage waste – Curbside programs, illegal dumping, etc.,

3. Public concern for the Environment

- Waste Diversion/Sustainability goals

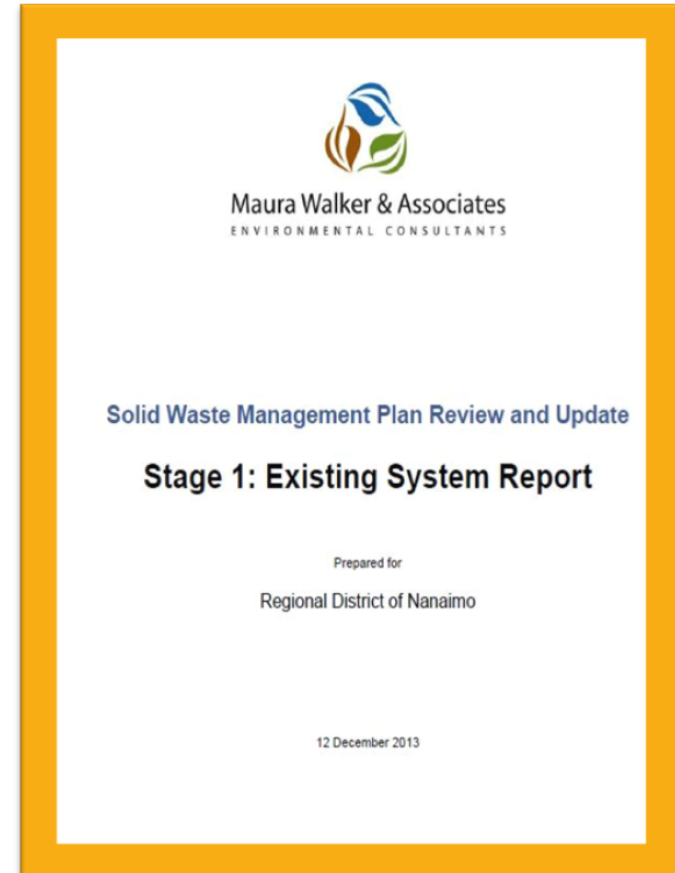


Overview of 2005 RDN Solid Waste Management Plan (SWMP):

- 2005 plan amended to include three main components:
 - (i) replace 3Rs Plan with Zero Waste Plan;*
 - (ii) the Residual Waste Management Plan;*
 - (iii) Waste Stream Management Licensing Bylaw*
- 2010, the plan was amended to include the D&O Plan for the Regional Landfill.
- 2013 review and update the Plan as required

Solid Waste Management Planning

- Provides context for regional planning, infrastructure & collection services
- Performance measures help set long term vision for the next 10 years



Status of Plan Review

➤ Stage One Report confirmed the following achievements:

- ✓ 2002 - RDN committed to the Zero waste philosophy
- ✓ 2004 – Implemented the Waste Stream Management Bylaw
- ✓ 2009 Expanded Disposal Bans
- ✓ 2010/2011 - full implementation of the green bin program

➤ Performance Measures and Metrics:

- ✓ RDN's 2012 diversion rate was 70%
- ✓ RDN achieved a disposal rate of 350 kgs per capita
- ✓ Design & Operations Plan confirms 20 yrs. landfill capacity

SOLID WASTE MANAGEMENT PLAN REVIEW PROJECT STAGES & ACTIVITIES

TIMELINES

STAGES

ACTIVITIES

2013

STAGE 1

EVALUATE EXISTING
SYSTEM

- PLAN IMPLEMENTATION
STATUS/FUTURE NEEDS
- ISSUES & OPPORTUNITIES



2014

STAGE 2

DEVELOP & EVALUATE
OPTIONS AND
STRATEGIES

- DEVELOP OPTIONS
- INCLUDE STRATEGIES FOR REVIEW
- PREPARE SOLID WASTE
MANAGEMENT PLAN



2014

STAGE 3

PUBLIC ENGAGEMENT
&
ADOPTION

- CONDUCT PUBLIC REVIEW
- PLAN APPROVAL

Role of the Public Advisory Committee

- Provide community wide representation
- MOE requirement to engage
- Share ideas and knowledge
- Act as a “sounding board” before reaching out to the wider public



ENGAGE STAKEHOLDERS THROUGHOUT SWMP REVIEW PROCESS

Evaluate current system
& identify strengths &
opportunities

Establish goals &
priorities for
considering options

Develop new
program & policy
options

Develop consultation
plan & liaise with MOE

Recruit & establish
Advisory Committee

Develop draft plan
for diversion &
residual options

Consult with wider
public on the draft
plan

KEY

Stage 1

Stage 2

Stage 3

Incorporate feedback
from wider consultation

Prepare final plan

MOE & Board approval

Approved Committee Structure

Public Solid Waste Technical Advisory Committee (PSWTAC)

*Role: Provide
recommendations to Select
Committee*

Regional Solid Waste Advisory Select Committee (RSWASC)

*Role: Advise the Board &
PSWTAC*

RDN Board of Directors

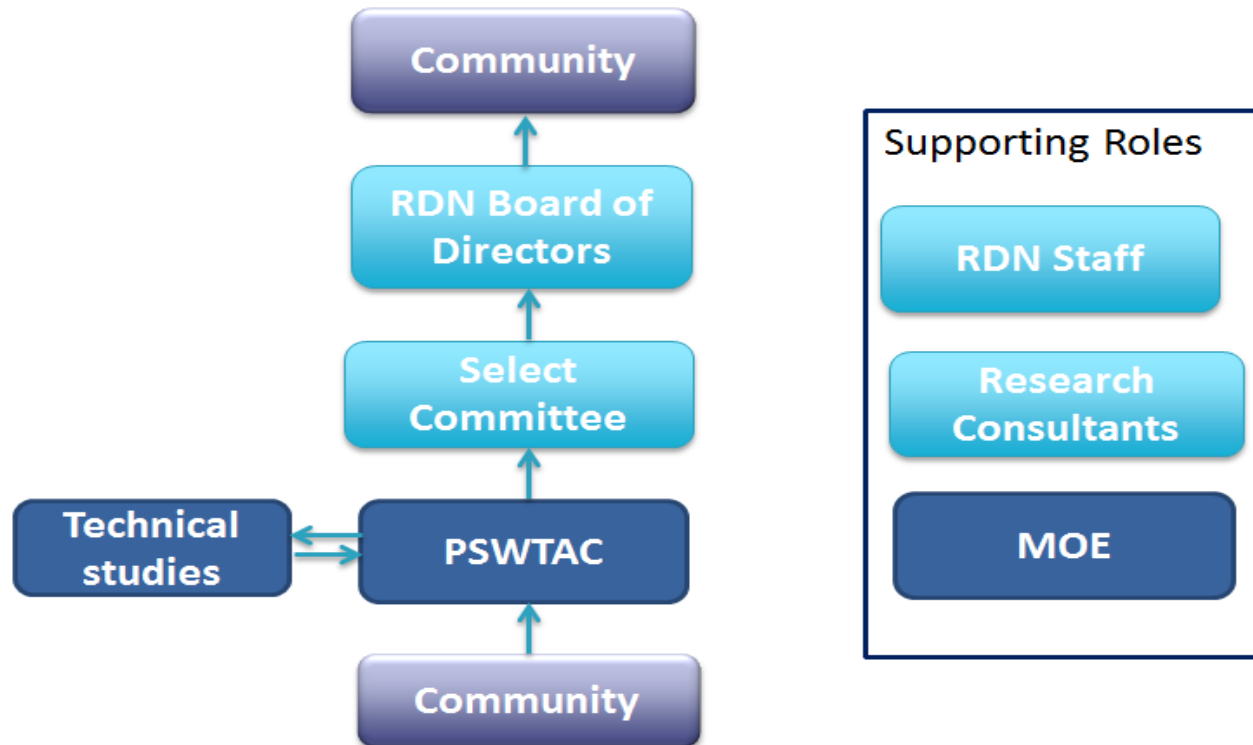
*Role: Decision making
authority to recommend
submission to the MOE*



Making it Happen



Reporting Structure for the Committees



Thank you....



Contact Information:

Larry Gardner, Manager of Solid Waste

lgardner@rdn.bc.ca

Ph:250-390-6539