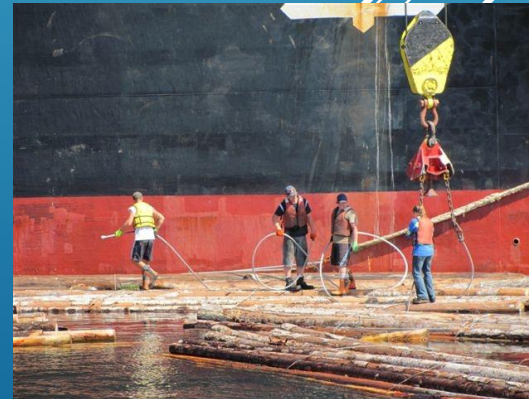




# ***City of Nanaimo Council Orientation***

***January 15, 2015***





## **Who We are:**

**The Port was created in 1961 as the Nanaimo Harbour Commission and was later amended to the Nanaimo Port Authority on July 1<sup>st</sup>, 1999 under the Canada Marine Act.**

**The Port is a Federal agency whose mandate is provide a marine infrastructure for International cargo. The Port is also responsible to manage, protect navigation and safety of the Nanaimo Harbour. The NPA must remain financially self –sufficient, without subsidy from any level of government. The Port strives to be competitive and continues its role as a catalyst to improve the Nanaimo Waterfront.**

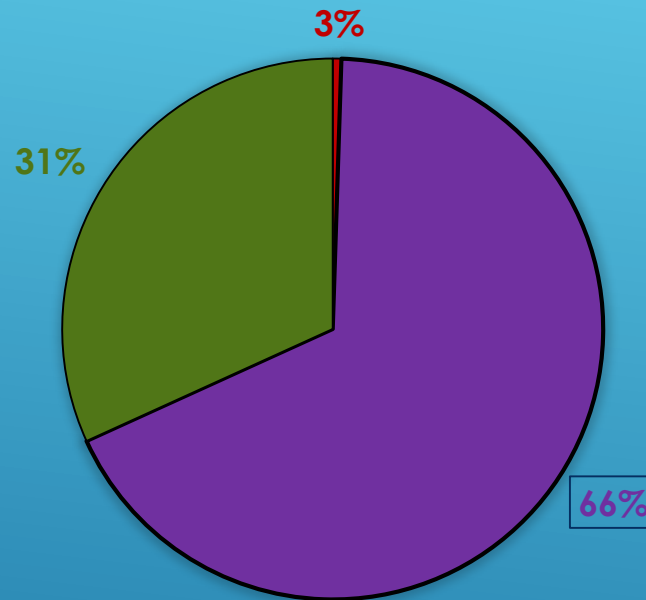
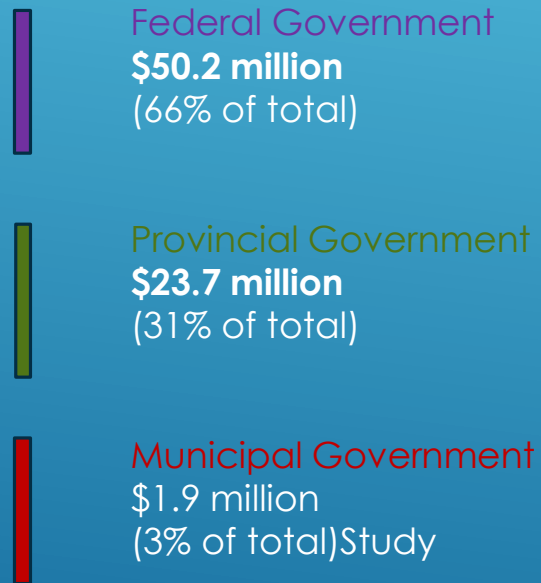
**The NPA is one of 18 federal operated ports in Canada and is part of the National Transportation network.**

**The NPA provides Vancouver Island communities a freight gateway to the world and in particular the “Asia Pacific Gateway”.**

# NPA Economic Impact Study 2014

Type	Jobs	Person yrs	Wages (\$millions)	GDP (\$millions)	Output (\$millions)
Direct	3,200	2,900	185	290	665
Indirect	2,000	1,800	110	170	385
Induced	1,200	1,000	55	125	190
<b>Total Impact</b>	<b>6,400</b>	<b>5,700</b>	<b>350</b>	<b>585</b>	<b>1,240</b>

# ANNUAL ESTIMATED TAX REVENUES OF THE PORT OF NANAIMO



Total Contribution  
**\$75.8 million**





# NPA Port Operations within Nanaimo

## Port Property – Newcastle Channel

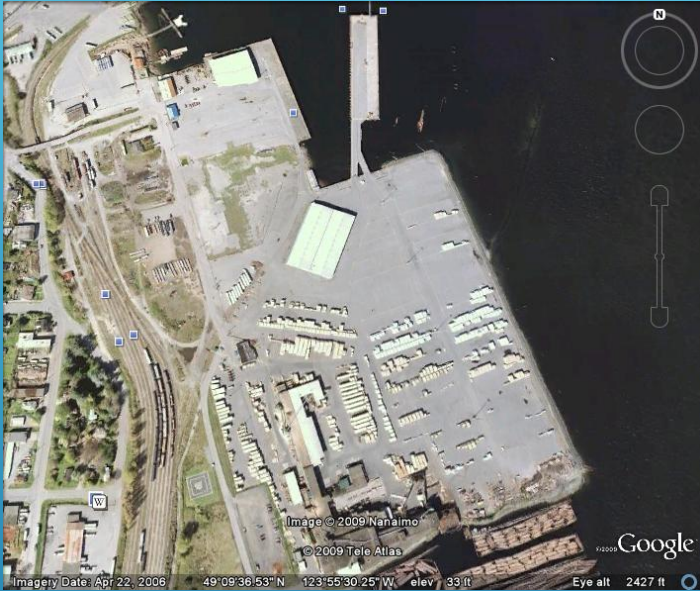


- **Total of 9 properties (Federal) lease arrangements.**

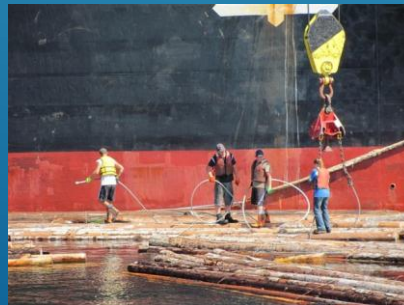
**Suncor Terminal  
Anchorage Marina  
Nautical's Marina  
Newcastle Marina  
Palm's Marina  
Harbour Homes (shipyard)  
Waterfront Properties  
Townsite Marina  
Nanaimo Yacht Club**

**Total of 46 acres**

# NPA Assembly Wharf Terminal



- **35 acres (Federal Property)**
- **2 deep-sea berths**
- **Cruise Terminal & Welcome Centre**
- **WFP Mill (presently closed)**
- **NPA Office**
- **Helijet Pad (starting Feb)**
- **Under redevelopment**





# NPA Duke Point Terminal



## Primary Cargo Terminal

- **75 acres of property**
- **20 acres handling cargo operations**
- **25 acres under lease agreements**
- **30 acres currently undeveloped**
- **International containers –Short-sea undertaking \$9.3 million upgrade project secured \$4.65 million federal funding**
- **100 ton barge ramp**



# NPA Inner Harbour Marina – Seaplane Terminal



- **NPA Inner Harbour Marina (6000 linear feet)**
- **Pioneer Plaza and Waterfront Walkway**
- **Marina life current infrastructure 3-5 years**
- **Redevelopment project to replace 2016-2017**
- **Estimated replacement cost \$7-9 million**
- **Location of NPA Floatplane Terminal  
Harbour Air – Tofino Air (approx. 120,000 passenger PA)**
- **Location of Protection Island Ferry**



# NPA Patrol Division – First Response



- **NPA Eagle – NPA Osprey (patrol boats)**
- **Operating 7 day per week**
- **First Responders**
- **Monitoring harbour for safety & environmental concerns**
- **Water transport for RCMP, BC Ambulance & Fire Dept**
- **NPA Eagle has fire suppression system to handle water bore situations – City supplied pumping system**





***Thank you***

***Questions ?***