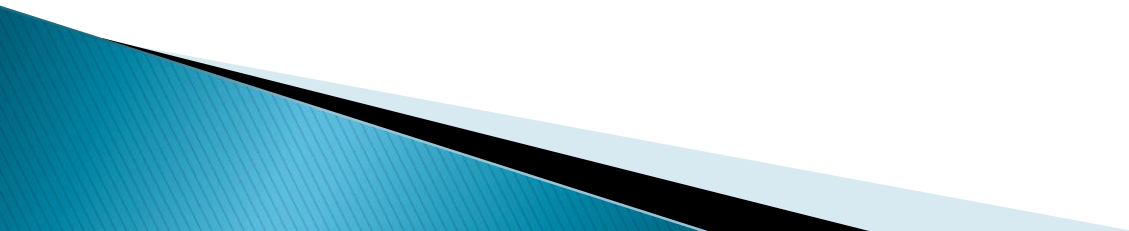


Capital Investment With Community Partners



I. Background

Reason I Am Here:

- a. My Background – Community/Board Member
- b. Separate Vertical Silos – 1970's
- c. School District an Asterisk at Bottom of Page
- d. Economic Development Committee
- e. School District Largest Employer North of Victoria
 - 2000 employees
 - 194 million dollar Operating Budget
- f. This area thrives on Public Services
 - School District/Biological Station/Hospital/VIHA
VIU/City/Regional Board, etc.

When Building Community:

- We need to have a Strategic Plan that involves all elements of the community
 - ie. Capital Construction in Alberta for schools involve placing elementary and secondary schools near or adjacent to swimming pools, ice and recreational spaces.
- Schools are a centre piece for community and economic development.
- Not so in BC. We have to fight for everything that we can get in public education and for public services.
- While we have had some operational and administrative cooperation, unlike other jurisdictions, we continued to work in our separate silos. When we had the referendum for the Nanaimo Aquatic Centre and the cost of land went up we found a way for the School District to cooperate with the City to make it happen (picture)
- Recently, the City of Nanaimo and the School District co-operated and developed the largest land swap in their history. This came about through the leadership former Superintendent Dave Hutchinson, former Secretary Treasurer, Phil Turin and the leadership of the Mayor and Council.

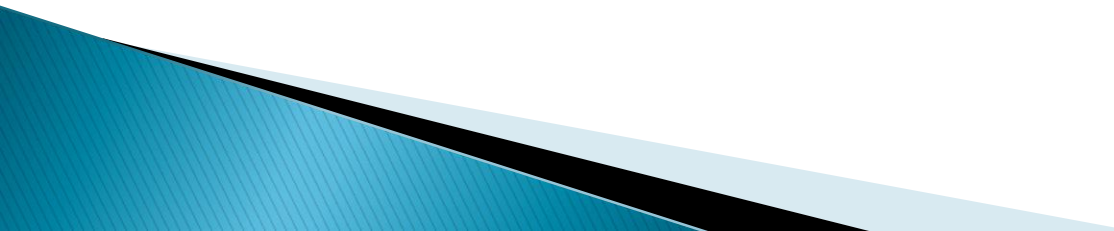
Nanaimo Aquatic Centre – NDSS



Nanaimo-Ladysmith:

- ▶ Many small schools—built up around mining communities
- ▶ Total enrollment in 1997 17,437*
- ▶ Total enrollment in 2013 13,519*
- ▶ Decline of 3,918 22.5%
- ▶ No. of schools in 1969 = 50
- ▶ No. of schools closed since 1969 = 14
- ▶ New schools: Dover Bay, FJ Ney, Randerson Ridge
- ▶ Previous Facilities Plans (3) public consultation and support
for the plans – 3 already done –this is the 4th

***Ministry of Education figures**

- **Government policy for BC School Districts is that Districts must have between 90 – 110 % utilization of schools in order to qualify for funding and a District must contribute significant amounts to a capital project.**
 - **Currently SD68's utilization rate is 83.7%*. We need to improve our utilization rate by up to 26.3% to qualify for funding.**
 - **ERGO the District cannot afford to continue to operate small, inefficient schools!**
 - **Community support is needed from the whole community in order to create first class educational facilities. This means School District co-operation with the City of Nanaimo, Town of Ladysmith, District of Lantzville, Regional Board, VIU along with support from the Chamber of Commerce, Economic Development Commission and all sectors of the business community.**
- 

II. Previous Board

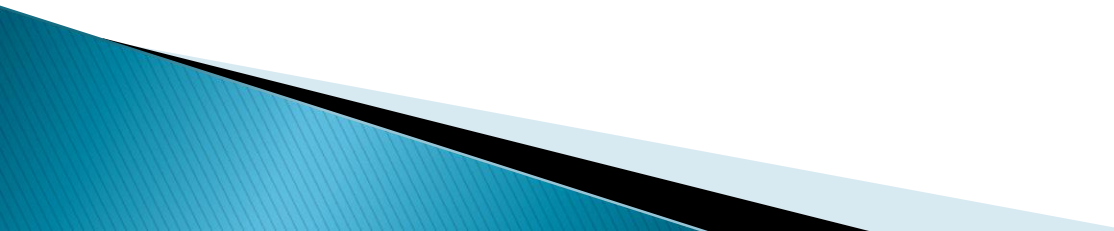
Completed a Strategic Plan based in large part on the recommendations of Dr. Player (the consultant) which included a learning plan for students and recommended improvements in facilities.

Dr. Player noted that currently the situation in Nanaimo Ladysmith schools is characterized by:

- Student performance that is below the provincial average;
- A lack of program enrichment;
- Deteriorating facilities, including 40 percent beyond their useful life;
- Costly empty space;
- Unnecessary staffing duplication;
- Architecturally dysfunctional buildings; and
- A \$5 million budget shortfall

- The District Strategic Plan which included the 10 Year Facilities Plan had comprehensive and wide spread support from all sectors of the District
- Some schools were closed and were consolidated in other schools. For example, E'cole Davis Road and many French Immersion students moved to the under utilized North Oyster Elementary. Other students were moved to Ladysmith Intermediate and Ladysmith Primary. Cedar Secondary School was closed and students from 8–12 had a choice to attend Ladysmith Senior Secondary or John Barsby.
- Cedar Secondary School was to be converted to an elementary school K–7 which would draw students from Woodbank Elementary and North Cedar Intermediate, both aging structures.
- The new Cedar Elementary school would have a Fine Arts focusa state of the art facility.
- About \$500K has already been spent in conversion of the Secondary School to an Elementary School to accommodate students from K–7. In addition, \$365K was spent to upgrade the fields around the new Elementary School and those fields would also be available to the wider community for non school use.

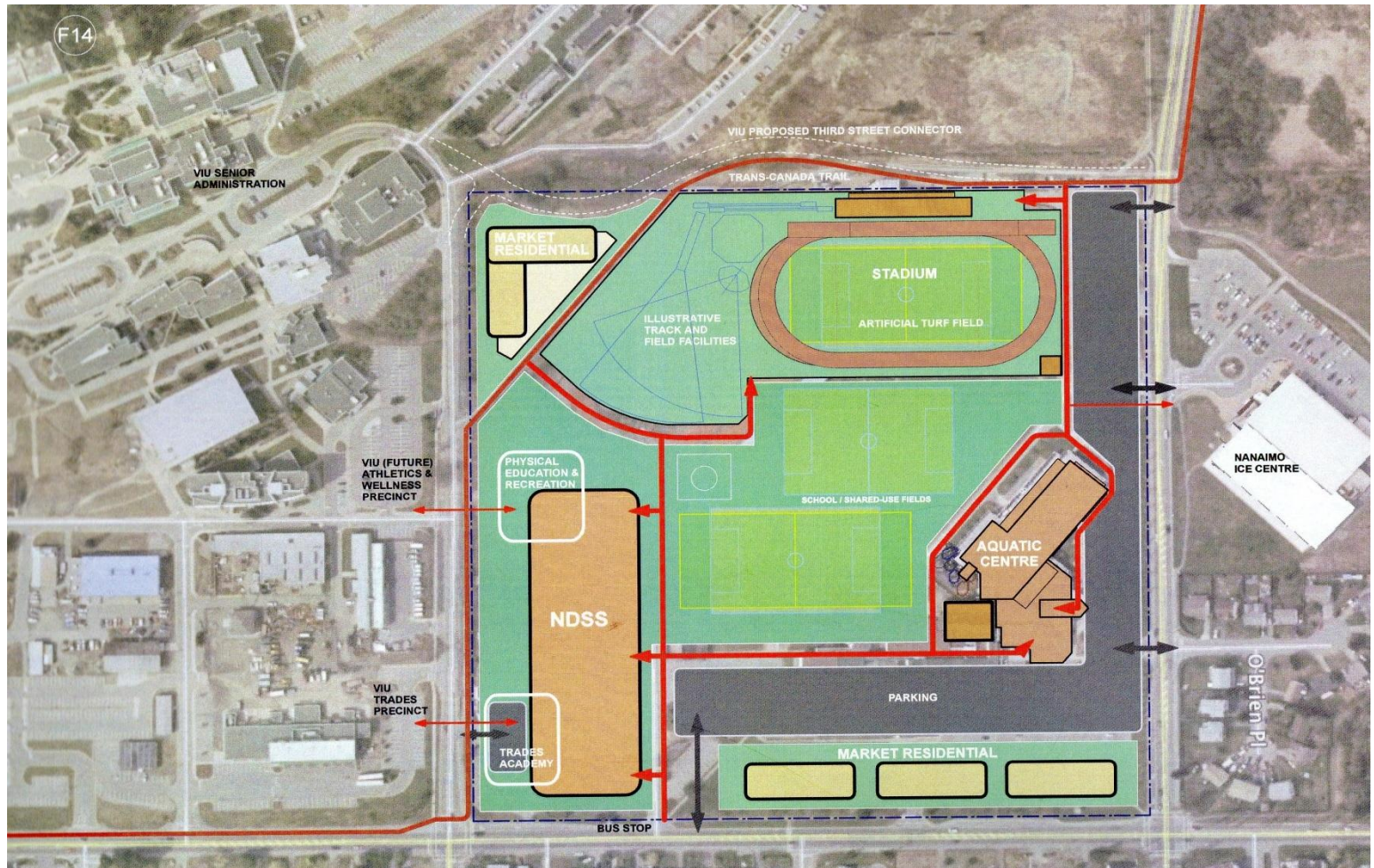
A major opportunity exists for School District, City, VIU, Track and Field Club and others to participate in conversations around building a new Secondary School and upgraded recreational facilities.

- a) A series of meetings were held between School Board and Staff; City Council and Staff and VIU Staff and the Track and Field Community**
 - b) This development would involve capital funds from the Ministry of Education, funds from City of Nanaimo and VIU and capital money from the School District's capital reserve fund,**
 - c) This capital reserve fund was established and monies were placed in this account from sales of surplus property**
- 

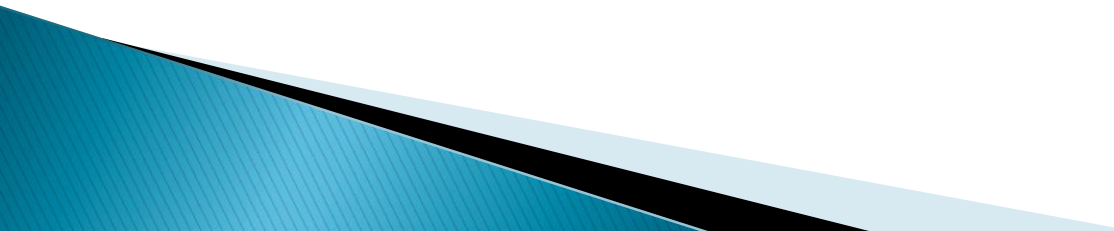
Current Aerial View of Site

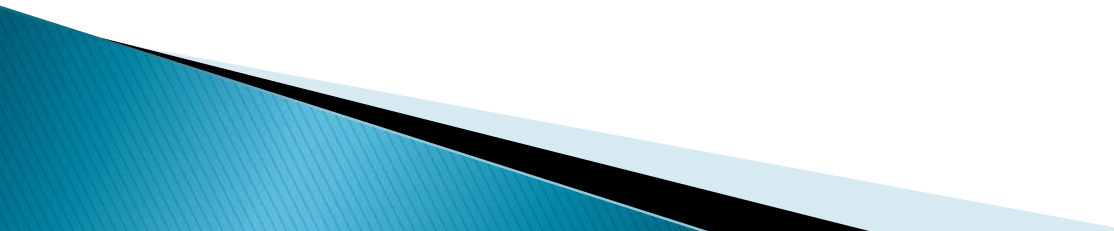


A Preliminary Option



III Current Board Elected 2014

- ▶ 7 new Trustees were elected – with no experience
 - ▶ Many in the District have indicated that they believe that the majority of these trustees were elected on a one-issue which was to re-open Cedar Secondary School.
 - ▶ The new Board voted in February/2015 to review the 10 Year Facilities Plan by yet again consulting everyone in the District.
 - ▶ The 4 previous consultations since 2004 used comprehensive mechanisms to obtain public feedback like **THOUGHTSTREAM** and accepted all written comments that were submitted . The information collected was contained in thick binders that when stacked was over 3 feet high.
- 

- ▶ Current Board developed a survey entitled “**Your Voice**” which was extremely flawed and biased and was written apparently by one Trustee and did not receive official Board approval.
 - ▶ Several Trustees admit that the survey was flawed. Only 205 out of a total of the 1290 responses were from Cedar.
 - ▶ There was no checks and balances for responses ie. multiple responses could come from one person.
 - ▶ Judging from the responses a large number of the public chose not to complete the survey.
 - ▶ Many comments from parents suggested that they did not understand the questions and relevance of some of the questions being asked.
- 

- Steve Rae, current Board Chair, continues to maintain there is no capital money available from the government to build or repair schools
- This is not only untrue it is very misleading. For example, in the last few years, money HAS been provided by the Ministry Capital Branch for the following District projects:
 - Wellington – 24.5 million (which took 8 years of hard work to receive this funding)
 - “Surrey, Peace River North, Nishgq”a, Langley, Central Okanagan, Vancouver, Sooke, Prince George, Nicola–Similkameen, North Vancouver, Coquitlam, Saanich.”*

“Our priority is to provide safe learning environments for all BC students. This is why we are replacing and upgrading schools across the province to the latest seismic safety standards. We are also expanding and building new facilities in school districts WHERE STUDENT ENROLLMENT IS OVER CAPACITY.”

*Ministry of Education Press Release January 14, 2015

In my presentation to the School Board in February 2015, I said:

“When making decisions that affect the whole district the Board would be prudent to consider the results of the recent election:

- ▶ **The highest vote–getter in the School Board Election received 9545 votes**

Percent of eligible voters:

City of Nanaimo	10.28%
Ladysmith	9.42%
Regional District	12.8%
Average overall	10.83%

- ▶ **This cannot be viewed as a mandate when over 75,000 citizens did not vote for the top vote–getter. However the interests of these 75,000 citizens need to be represented by our School Board.”**
- 

WHAT CAN YOU DO AS COUNCIL?

- You can request a meeting with the School Board and staff to review the current 10 Yr. Facilities Plan which has not been amended and will not be until earliest June 2015
- You can meet with VIU Board of Directors and Staff to look at the implications that the re-opening of Cedar as a Secondary School will have on the whole District and which will lead to the collapse of the proposed joint School District/City/VIU project on the NDSS site
- If you feel you are unable to take a formal council position on this issue, I would urge all of you as elected representatives of the City personally make representation to the Minister's office asking him to intervene

THANK YOU! ANY QUESTIONS?

