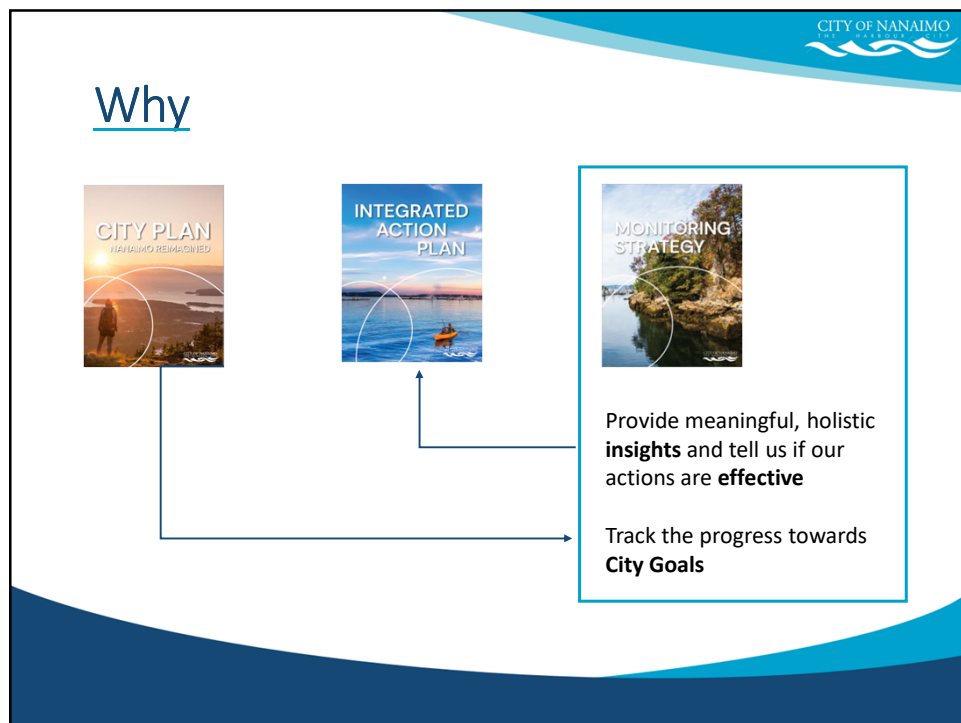


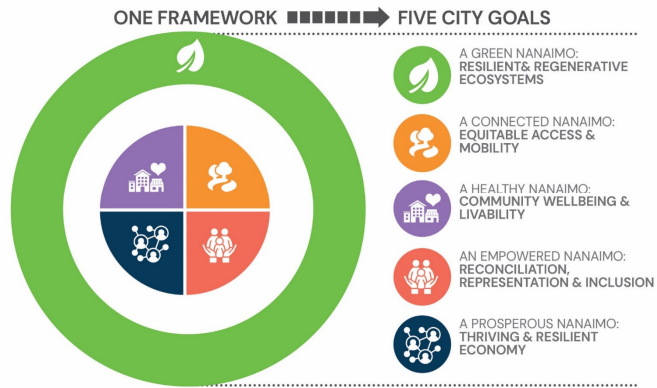


1



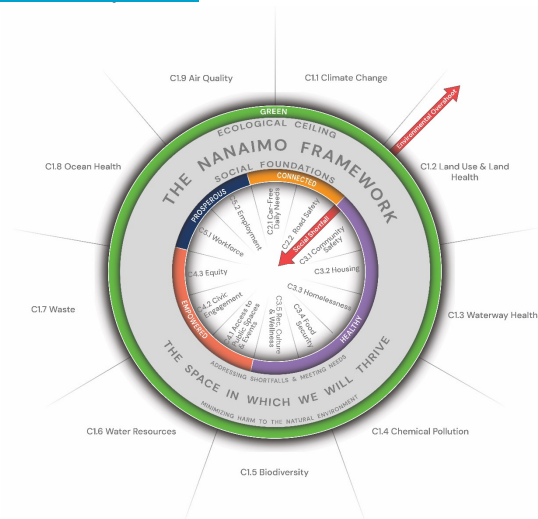
2

# The Nanaimo Framework & Five City Goals



3

# Areas of Impact



4

## Definitions

**KEY INDICATORS** tell us how we are doing at a high level and how close or how far we are to defined goals or aspirations.

**SUSTAINABILITY END GOALS** are quantified science- or ethics-based goals or aspirations that take into account environmental limits and a basic standard of wellbeing that all residents have a claim of achieving.

5

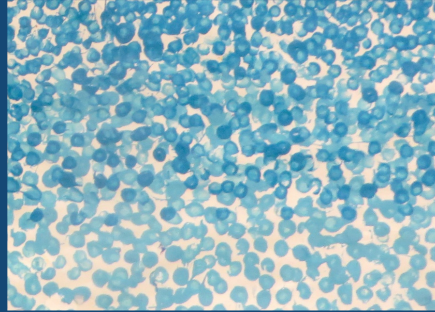
## Definitions

**SUPPORTIVE INDICATORS** will tell us how we are doing in specific areas and can show us over time if we are moving in the right direction.

**TARGETS** show what we wish to achieve and when we want to achieve it by.

6

## Big Picture vs Specifics



Pointillist Balloon by Eden, Janine and Jim

7



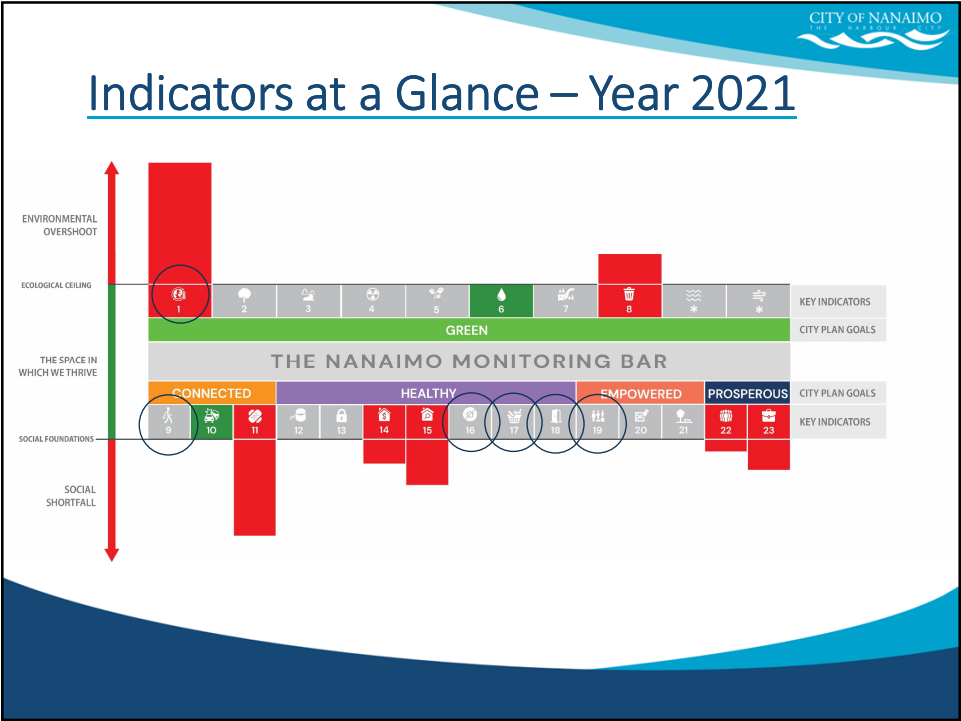
VS



8



9



10

## Example 1: Water Resources

- **Key Indicator:** Sufficiency of Reservoir Supply
- **Sustainability End Goal:** Water level at Jump Lake has to be maintained at 30% of reservoir capacity or above every day in a year.

- **Metric:**

Measured performance = # of days per year that  
reservoir capacity is at or above 30%

-----

End Goal = 365 days

11

## Example 1: Water Resources

- **Supportive Indicators and targets**
  - Annual total water consumption | no target
  - Average water consumption per person per day | with target
  - Residential water consumption per person per day | no target

12

## Example 2: Land Use & Land Health

- **Key Indicator:** Tree Canopy Coverage – Neighborhood
- **Sustainability End Goal:** Every neighborhood has at least a 30% tree canopy coverage.
- **Metric:**  
Measured performance = # of neighborhoods with at least 30% tree canopy coverage

-----  
End Goal = Total # of neighborhoods

13

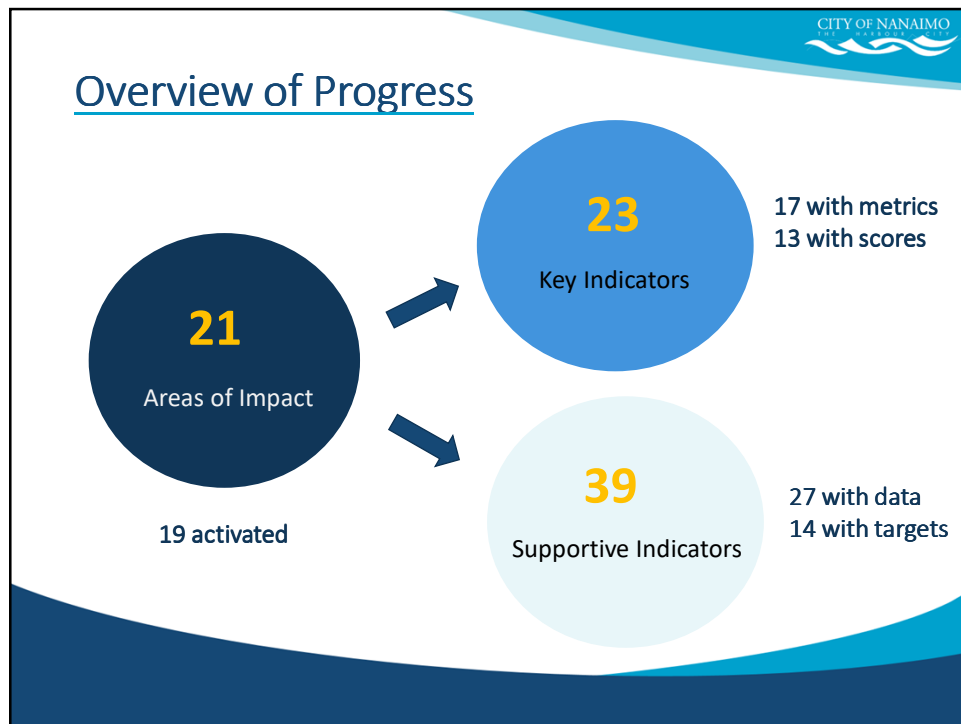
## Example 2: Land Use & Land Health

- **Supportive Indicator:**  
City-wide Tree Canopy Coverage
- **Target:** 32% by 2020

2022 Tree Canopy Coverage by Neighbourhood

Neighborhood	Canopy Cover (%)
Chase River / Duke Pt / South End	32
City Center	11
Protection Island	61
Departure Bay	18
Diver Lake	20
Dover	14
Hammond Bay	49
Harewood	29
Linley Valley	42
Long Lake	38
Newcastle	11
North Slope	26
Northfield	14
Oceanview	68
Pleasant Valley / Rutherford	21
Townsite	15
Vancouver Island University	19
Westwood	49
City-wide	33

14



15

CITY OF NANAIMO  
THE QUALITY CONNECTION

## Lessons Learned

- The development of indicators is an iterative process and will likely continue to evolve.
- Quantifying our goals in the context of the Nanaimo Framework requires innovation and could be very complex in some areas.
- Advancement in information technologies, such as GIS holds great potential for generating data more efficiently and conducting complex analyses.

16



## Reviewing Time Frames

- Annual Monitoring
  - Q4 every year starting in 2024
- Four Year Monitoring
  - A more comprehensive monitoring report

17

## Proposed Next Steps

- Continue with data collection and indicators and targets development;
- Develop a public-facing webpage and eventually transition to a dynamic dashboard;
- Engage the GPC on the monitoring process and assess engagement options in a follow-up meeting;
- Prepare the public release of the monitoring data online in Q4 2024.

18

## Recommendation

### Option 1:

That the Governance and Priorities Committee recommend that Council endorse in principle the draft Monitoring Strategy and engagement framework and direct staff to proceed with next steps as outlined in the 2024-APR-29 staff report by the Manager, Sustainability.

### Option 2:

That the Governance and Priorities Committee provide alternate direction.

19



20