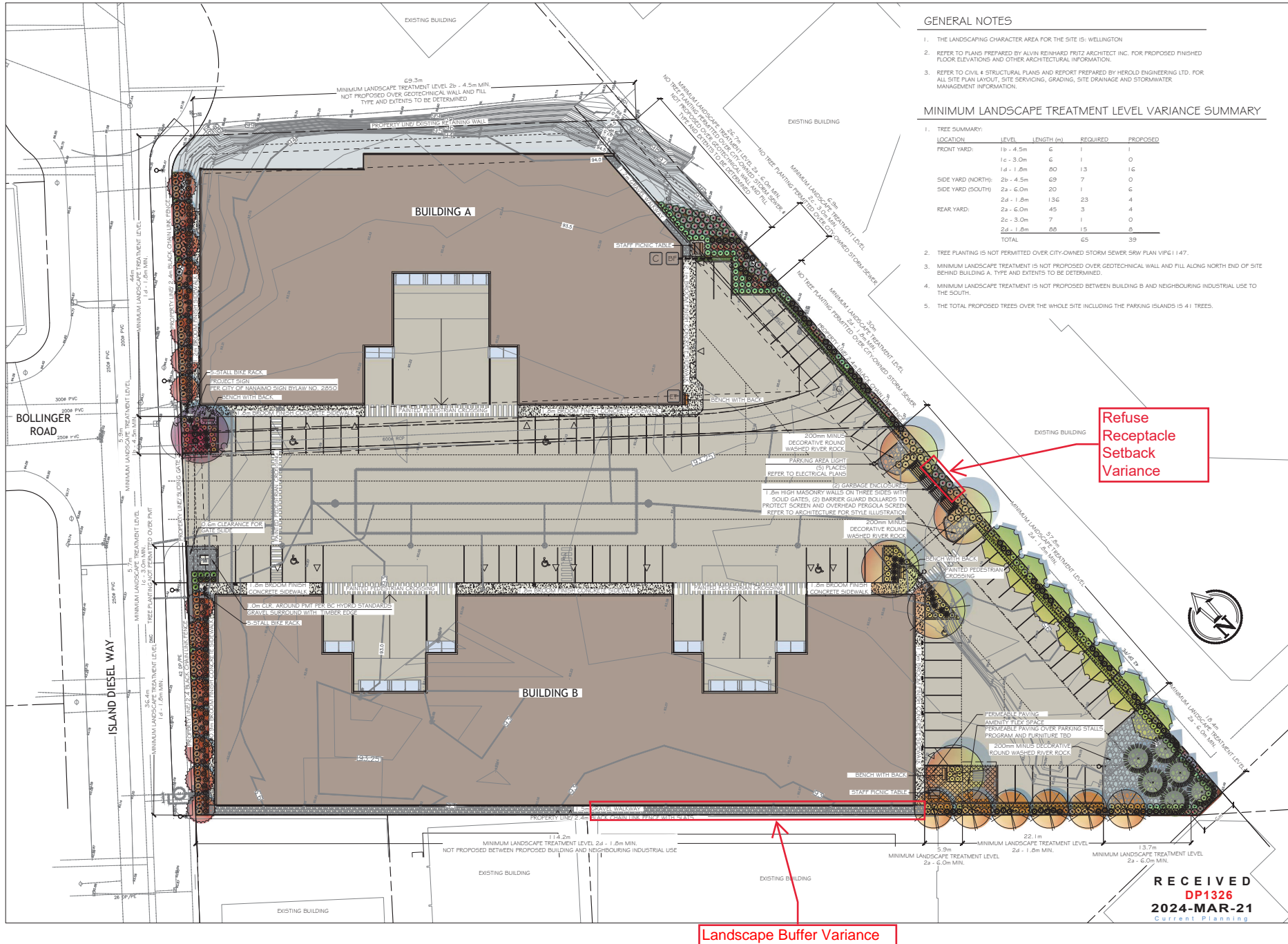


ATTACHMENT F LANDSCAPE PLAN AND DETAILS



THIS DRAWING IS NOT FINAL AND SHALL NOT BE USED FOR CONSTRUCTION WORK UNTIL IT HAS BEEN STAMPED AND SIGNED BY THE LANDSCAPE ARCHITECT. THE COPYRIGHT TO ALL DESIGN AND DRAWINGS ARE THE PROPERTY OF MACDONALD GRAY CONSULTANTS. REPRODUCTION OR USE FOR ANY PURPOSE OTHER THAN THAT AUTHORIZED BY MACDONALD GRAY CONSULTANTS IS PROHIBITED.

Island Diesel Way Industrial Complex
341234 BC Ltd
1950 & 1960 Island Diesel Way, Nanaimo, BC

LANDSCAPE ARCHITECTURE PLAN	
Date:	March 20, 2024
Drawn:	CW
Checked:	CW
Scale:	1:250 metric
Project Number:	23-0345
DRAWING NUMBER:	L1 of 2

REVISION SCHEDULE	
#	NOTES
0	02AUG2023 DP Pre-app Meeting
1	18OCT2023 DP Coordination
2	06NOV2023 Issued for DP
3	11JAN2024 DAP Meeting
4	12FEB2024 Reissued for DP
5	20MAR2024 Reissued for DP

RECEIVED
DP1326
2024-MAR-21
Current Planning

IRRIGATION EQUIPMENT LEGEND

SYMBOL	MANUFACTURER	MODEL	DESCRIPTION
	HUNTER	TBD	AUTOMATIC IRRIGATION CONTROLLER IN BUILDING A ELECTRICAL ROOM
	HUNTER	WSS-SEN	WIRELESS SOLAR-SYNC SENSOR ON SOUTH-FACING EAVE
	BY CIVIL	BY MECHANICAL	38mm (1.5") DOUBLE CHECK BACKFLOW PREVENTER AND WATER SUPPLY IN ELECTRICAL ROOM.
		SCHEDULE 40	38mm (1.5") PVC MAINLINE
		SCHEDULE 40	PVC SLEEVES UNDER ALL PAVING AND THROUGH WALLS MIN. 1" TYP. MAINLINE & CONTROL WIRE: 1/2" (12.7mm) (6") LATERALS: 1/4" (6.35mm) (4") BURIAL DEPTH TO MATCH DEPTH OF CARRIED PIPE.

IRRIGATION NOTES

1. THE IRRIGATION SYSTEM SHALL BE DESIGN-BUILD BY THE OWNER.
2. IRRIGATION SYSTEM INSTALLATION SHALL MEET OR EXCEED THE REQUIREMENTS SET OUT IN THE MOST CURRENT VERSION OF THE CANADIAN NURSERY LANDSCAPE ASSOCIATION (CNLA) / CANADIAN SOCIETY OF LANDSCAPE ARCHITECTS (CSLA) CANADIAN LANDSCAPE STANDARD.
3. ALL PROPOSED ON-SITE PLANTING AND LAWN AREAS SHALL BE WATERED VIA AN UNDERGROUND, AUTOMATIC IRRIGATION SYSTEM UTILIZING A "SMART" (ET) WEATHER-BASED IRRIGATION CONTROLLER.
4. IRRIGATION EMISSION DEVICES SHALL BE LOW VOLUME ROTARY NOZZLES OR MICRO DRIP EQUIPMENT.
5. THE CONTRACTOR SHALL ADJUST THE PLACEMENT AND RADIUS OF SPRINKLERS AS REQUIRED BY FIELD CONDITIONS TO ACHIEVE FULL COVERAGE OF ALL PLANTED AREAS AND TO MINIMIZE OVER-SPRAY ONTO ADJACENT HARD SURFACES, FENCES AND PROPERTY LINES.
6. ALL PIPING UNDER PAVING SHALL BE INSTALLED IN SEPARATE SCHEDULE 40 SLEEVES AT A MINIMUM DEPTH OF 600mm WITH 150mm OF SAND BACKFILL ABOVE AND BELOW PIPE. ALL WIRING UNDER PAVING SHALL BE INSTALLED IN SEPARATE SCHEDULE 40 PVC CONDUIT. ALL SLEEVES AND CONDUIT SHALL BE INSTALLED PRIOR TO PAVEMENT INSTALLATION AND SHALL EXTEND 150mm BEYOND EDGE OF PAVEMENT OR CURB. BACKFILL FOR SLEEVES SHALL BE COMPACTED TO THE SPECIFIED DENSITY FOR THE SUBGRADE.
7. OPERATE IRRIGATION CONTROLLER WITHIN THE CITY OF NANAIMO WATER RESTRICTION SCHEDULE.

SURF DRIE BACK



DESIGN NOTES

This landscape plan shall include all necessary information to construct the landscape as shown. The contractor shall be responsible for obtaining all necessary permits and approvals from the appropriate authorities. The contractor shall be responsible for ensuring that the landscape is constructed in accordance with the design and specifications shown on this plan.

100% RECYCLABLE

Wishbone

Wishbone is a leading provider of landscape design and construction services. We have a team of experienced professionals who can help you create a beautiful and functional landscape for your property. Our services include site analysis, design, planting, and construction. We are committed to providing high-quality work and excellent customer service.

100% RECYCLABLE

PLANT LEGEND

SYMBOL	BOTANICAL / COMMON NAME	SIZE	SPACING	QTY.	NOTES
TREES					
	ACER RUBRUM 'BOWHALL' BOWHALL RED MAPLE	6cm CAL.	4.5m O.C.	16	DROUGHT TOLERANT
	FAGUS SYLVATICA EUROPEAN BEECH	6cm CAL.	SEE PLAN	5	DROUGHT TOLERANT
	PSEUDOTSUGA MENZIESII DOUGLAS FIR	2.5m	4.5m O.C.	6	NATIVE SPECIES, CONIFEROUS
	PYRUS CALLERYANA 'REDSPIRE' REDSPIRE FLOWERING PEAR	6cm CAL.	6.0m O.C.	7	DROUGHT TOLERANT
	QUERCUS PALLUSTRIS PIN OAK	6cm CAL.	SEE PLAN	1	DROUGHT TOLERANT
	SORBUS AUCUPARIA CARDINAL ROYAL CARDINAL ROYAL MOUNTAIN ASH	6cm CAL.	6.0m O.C.	6	DROUGHT TOLERANT
SHRUBS					
	GAULTHERIA SHALLON SALAL	#2 POT	1.0m O.C.	89	NATIVE SPECIES
	PINUS MUGO VAR. PLUMULO DWARF MOUNTAIN PINE	#2 POT	1.0m O.C.	76	DROUGHT TOLERANT
	POLYSTICHUM MUNITUM SWORD FERN	#2 POT	1.0m O.C.	76	NATIVE SPECIES
	POTENTILLA FRUTICOSA PINK BEAUTY & YELLOW GEM PINK & YELLOW SHRUBBY CINQUEFOIL	#2 POT	0.9m O.C.	40	NATIVE CULTIVARS
	RISES SANGUINEUM RED FLOWERING CURRANT	#2 POT	1.0m O.C.	94	NATIVE SPECIES
	ROSA NUTKANANA NOOTKA ROSE	#2 POT	1.0m O.C.	60	NATIVE SPECIES
	VACCINIUM OVATUM EVERGREEN HUCKLEBERRY	#2 POT	1.0m O.C.	76	NATIVE SPECIES
GROUNDCOVER, VINES & PERENNIALS					
	ARCTOSTAPHYLOS UVA-URSI KINNERRINICK	#1 POT	0.45m O.C.	300	NATIVE SPECIES
	HELICTOTRICHON SEMPERVIRENS BLUE OAT GRASS	#2 POT	1.0m O.C.	14	DROUGHT TOLERANT

PLANTING NOTES

1. ALL LANDSCAPE INSTALLATION AND MAINTENANCE SHALL MEET OR EXCEED THE MOST RECENT STANDARDS SET OUT BY THE CANADIAN NURSERY LANDSCAPE ASSOCIATION (CNLA) / CANADIAN SOCIETY OF LANDSCAPE ARCHITECTS (CSLA) CANADIAN LANDSCAPE STANDARD.
2. GROWING MEDIUM SHALL MEET OR EXCEED THE PROPERTIES OUTLINED THE CANADIAN LANDSCAPE STANDARD PER SECTION 6 GROWING MEDIUM. TABLE T-6.3.3.2. PROPERTIES FOR GROWING MEDIA: LEVEL 2 "GROOMED" - DP. GROWING MEDIUM DEPTHS: SHRUBS - 450mm TREES - 600mm BELOW AND AROUND ROOTBALL
3. MULCH SHALL BE COMPOST PER SECTION 1.0 MULCHING OF THE CANADIAN LANDSCAPE STANDARD. MULCH DEPTH SHALL BE 75mm MINIMUM OVER ALL TREE, SHRUBS AND GROUNDCOVER PLANTING AREAS.
4. PLANT MATERIAL QUALITY, TRANSPORT AND HANDLING SHALL COMPLY WITH CNLA STANDARDS FOR NURSERY STOCK.
5. ALL TREE, SHRUB, GROUNDCOVER AND LAWN AREAS SHALL BE WATERED VIA AN UNDERGROUND AUTOMATIC IRRIGATION SYSTEM UTILIZING "SMART" (ET) WEATHER-BASED IRRIGATION CONTROL. IRRIGATION EMISSION DEVICES SHALL BE HIGH EFFICIENCY LOW VOLUME ROTARY NOZZLES OR DRIP IRRIGATION EQUIPMENT.
6. PLANT QUANTITIES ARE FOR INFORMATION ONLY. IN CASE OF ANY DISCREPANCY THE PLAN SHALL GOVERN.
7. ALL PLANT MATERIAL SHALL MATCH TYPE AND SPECIES AS INDICATED ON THE PLANTING LEGEND. CONTACT THE LANDSCAPE ARCHITECT FOR APPROVAL OF ANY SUBSTITUTIONS. NO SUBSTITUTIONS WILL BE ACCEPTED WITHOUT PRIOR WRITTEN APPROVAL OF THE LANDSCAPE ARCHITECT.
8. CHECK FOR LOCATIONS OF WATER LINES AND OTHER UNDERGROUND SERVICES PRIOR TO DIGGING TREE PITS. EXCAVATED PLANT PITS SHALL HAVE POSITIVE DRAINAGE. PLANT PITS WHEN FULLY FLOODED WITH WATER SHALL DRAIN WITHIN ONE HOUR AFTER FILLING.
9. NO PLANTS REQUIRING PRUNING OF MAJOR BRANCHES DUE TO DISEASE, DAMAGE OR POOR FORM WILL BE ACCEPTED.

RECEIVED
DP1326
2024-MAR-21
Current Planning



THIS DRAWING IS NOT FINAL AND SHALL NOT BE USED FOR CONSTRUCTION WORK UNTIL IT HAS BEEN STAMPED AND SIGNED BY THE LANDSCAPE ARCHITECT. THE COPYRIGHTS TO ALL DESIGN AND DRAWINGS ARE THE PROPERTY OF MACDONALD GRAY LANDSCAPE ARCHITECTS. NO PART OF THIS DRAWING MAY BE REPRODUCED OR TRANSMITTED IN ANY FORM OR BY ANY MEANS, ELECTRONIC OR MECHANICAL, WITHOUT PERMISSION IN WRITING FROM MACDONALD GRAY LANDSCAPE ARCHITECTS.

Island Diesel Way Industrial Complex
341234 BC Ltd
1950 & 1960 Island Diesel Way, Nanaimo, BC

LEGENDS & NOTES

Date: March 20, 2024

Drawn: CM

Checked: CM

Scale: N/A

Project Number: 23-0345

DRAWING NUMBER: L2 of 2

REVISION SCHEDULE	NOTES
#	Date
0	02AUG2023 DP Pre-app Meeting
1	18OCT2023 DP Coordination
2	06NOV2023 Issued for DP
3	11JAN2024 DAP Meeting
4	12FEB2024 Reissued for DP
5	20MAR2024 Reissued for DP